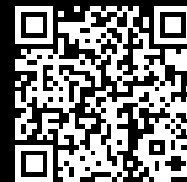


# Rittal – The System.

Faster – better – everywhere.



## CP 6372.542 Comfort Panel

State: 1/31/2026 (Source: [rittal.com/us-en](http://rittal.com/us-en))

ENCLOSURES

POWER DISTRIBUTION

CLIMATE CONTROL

IT INFRASTRUCTURE

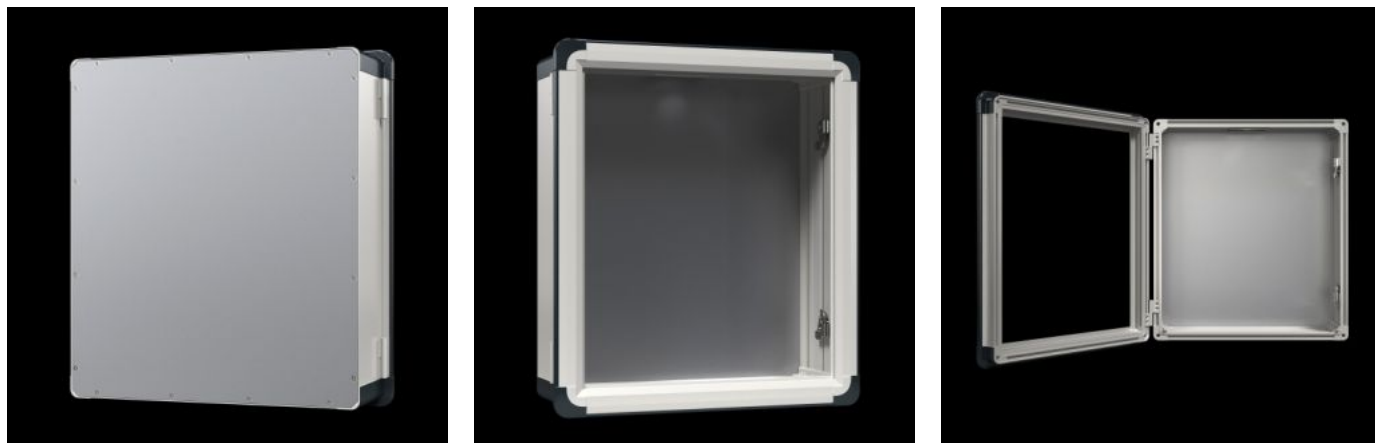
SOFTWARE & SERVICES

FRIEDHELM LOH GROUP



# CP 6372.542 - Comfort Panel

Aluminum housing, high thermal conductivity for optimum passive heat dissipation. Low weight coupled with high stability. Protection category IP 65 to IEC 60 529.



## Features

Model No.	CP 6372.542
Version	Support arm connection Ø 130 mm
Benefits	Aluminum housing, high thermal conductivity for optimum passive heat dissipation. Low weight coupled with high stability Compatible with all Rittal stand and support arm systems
Material	Housing: Extruded aluminum section Corner pieces: Die-cast zinc Corner protectors: Plastic
General color	Natural anodized
Color	Housing: Natural anodized. Corner pieces: RAL 7035 Corner protectors: Similar to RAL 7024
Supply includes	Enclosure with cut-out for support arm connection 3 mm double-bit lock insert may be exchanged for 41 mm lock inserts, plastic handles and T handles, type C Seals and assembly components for front panels Hinged rear panel, hinging on the longest side

# Features

Dimensions	Width: 628.5 mm Height: 508.5 mm Depth: 170 mm Width: 24.7 " Height: 20 " Depth: 6.69 "
Installation depth	152 mm 5.98 "
Protection category IP to IEC 60529	IP 65
Protection category NEMA	NEMA 12
Suitable for front panel width	520 mm 20.5 "
Suitable for front panel height	400 mm 15.7 "
Version	Service access from rear
Note	The support arm connection may be swapped over by rotating the enclosure
Base material	Aluminum
Lock	Lock version: Cam No. of locks: 2 Lock Insert: 3 mm double-bit
Packaging unit	1 pc(s).
Net weight	12.678
Gross weight	13.345
EAN	4028177663077
ETIM 9	EC002504
ECLASS 8.0	27180505

## Approvals

# Approvals

Approvals	UL + C-UL (listed)
Explanations	Declaration of conformity Declaration of conformity UK