

Rittal – The System.

Faster – better – everywhere.



CP 6372.552 Comfort Panel

State: 8/29/2025 (Source: rittal.com/us-en)

ENCLOSURES

POWER DISTRIBUTION

CLIMATE CONTROL

IT INFRASTRUCTURE

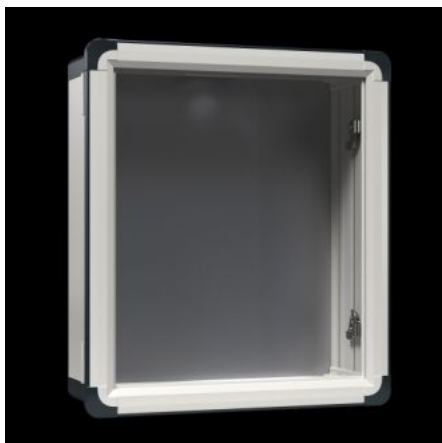
SOFTWARE & SERVICES

FRIEDHELM LOH GROUP



CP 6372.552 - Comfort Panel

Aluminum housing, high thermal conductivity for optimum passive heat dissipation. Low weight coupled with high stability. Protection category IP 65 to IEC 60 529.



Features

Model No.	CP 6372.552
Version	Support arm connection Ø 130 mm
Benefits	Aluminum housing, high thermal conductivity for optimum passive heat dissipation. Low weight coupled with high stability Compatible with all Rittal stand and support arm systems
Material	Housing: Extruded aluminum section Corner pieces: Die-cast zinc Corner protectors: Plastic
General color	Natural anodized
Color	Housing: Natural anodized. Corner pieces: RAL 7035 Corner protectors: Similar to RAL 7024
Supply includes	Enclosure with cut-out for support arm connection 3 mm double-bit lock insert may be exchanged for 41 mm lock inserts, plastic handles and T handles, type C Seals and assembly components for front panels Hinged rear panel, hinging on the longest side

Features

Dimensions	Width: 628.5 mm Height: 608.5 mm Depth: 170 mm Width: 24.7 " Height: 24 " Depth: 6.69 "
Installation depth	152 mm 5.98 "
Protection category IP to IEC 60529	IP 65
Protection category NEMA	NEMA 12
Suitable for front panel width	520 mm 20.5 "
Suitable for front panel height	500 mm 19.7 "
Version	Service access from rear
Note	The support arm connection may be swapped over by rotating the enclosure
Base material	Aluminum
Lock	Lock version: Cam No. of locks: 2 Lock Insert: 3 mm double-bit
Packaging unit	1 pc(s).
Net weight	14.375
Gross weight	17.375
Customs tariff number	94032080
EAN	4028177663107
ETIM 9	EC002504
ECLASS 8.0	27180505

Approvals

Approvals	UL + C-UL (listed)
Explanations	Declaration of conformity Declaration of conformity UK