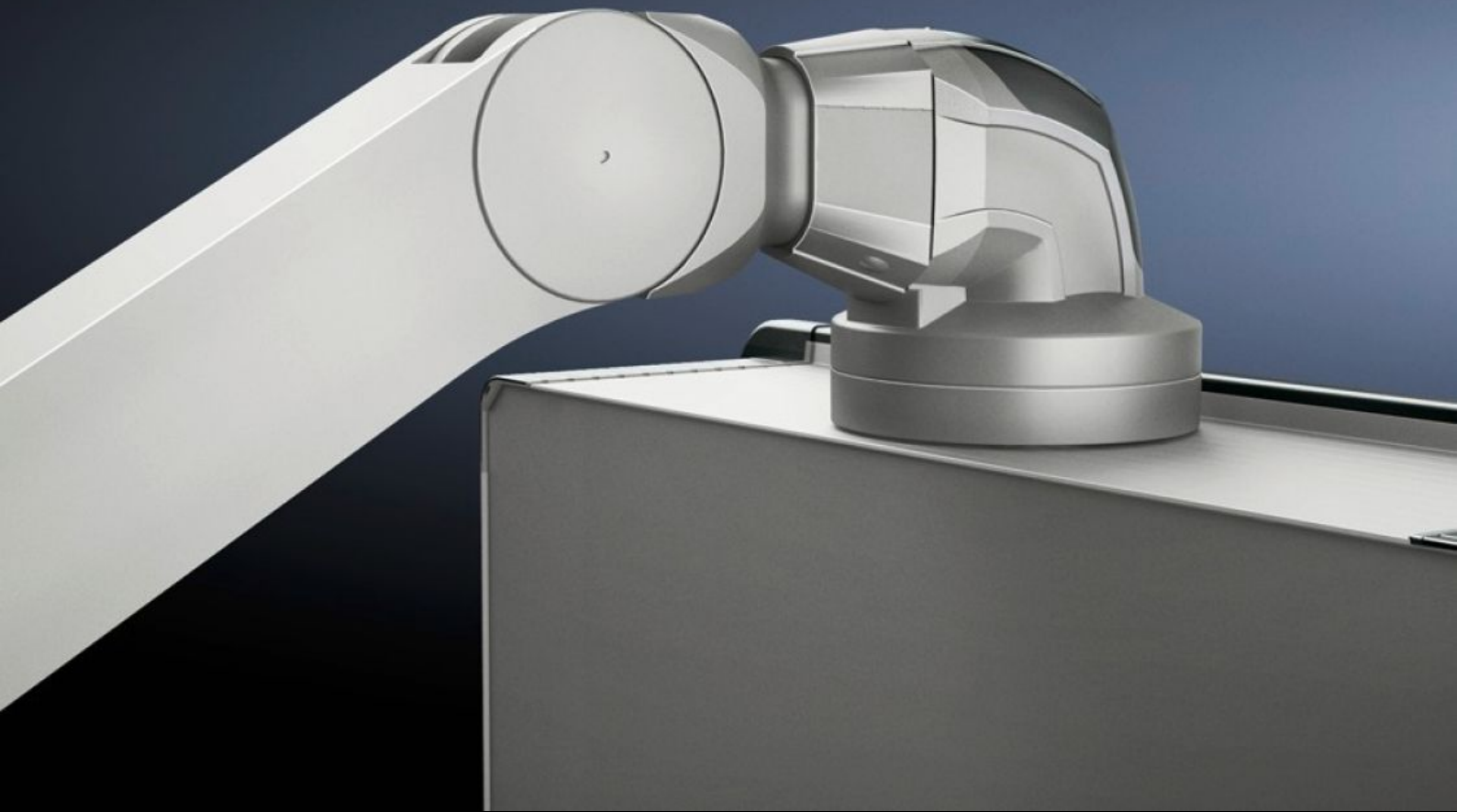


Rittal – The System.

Faster – better – everywhere.



CP 6510.210

Support Arm, Height Adjustable

State: 4/2/2026 (Source: rittal.com/us-en)

ENCLOSURES

POWER DISTRIBUTION

CLIMATE CONTROL

IT INFRASTRUCTURE

SOFTWARE & SERVICES

FRIEDHELM LOH GROUP



CP 6510.210 - Support Arm, Height Adjustable for support arm systems CP 120

Offers enhanced ergonomics

Features

Model No.	CP 6510.210
Product description	offers improved ergonomics with adjustment range for tall and short operators, for seated and standing work adjustable to up to 800 mm as required using an adjustment screw on the front of the support arm. Clip-off plastic panels for access to integral cable routing.
Benefits	Precise coordination of the compression spring to the housing weight via an adjusting screw on the rear of the support arm Complete functional reliability – if the compression spring breaks, the arm will remain in position Tilting angle of the mounted housing is identical in every height position
Color	RAL 9006
Supply includes	Assembly components
Length	962 mm 37.9 "
Installation options	Maximum cross-section for cable entry 8 x 15 mm
Note on Model No.:	Weight range applies to configured housing and vertical support section.
Dimensions	Length: 962 mm Length: 37.9 "
Load	10 kg...20 kg 22 lb....44.1 lb.
Packaging unit	1 pc(s).
Net weight	7.574 kg
Gross weight	7.973 kg

Features

Customs tariff number	73269098
ECLASS 8.0	27189263
Product description	CP Support arm, height-adjustable, for support arm system CP 120, L: 962 mm, for weight range 10-20 kg

Approvals

Explanations	Manufacturer's declaration
--------------	----------------------------