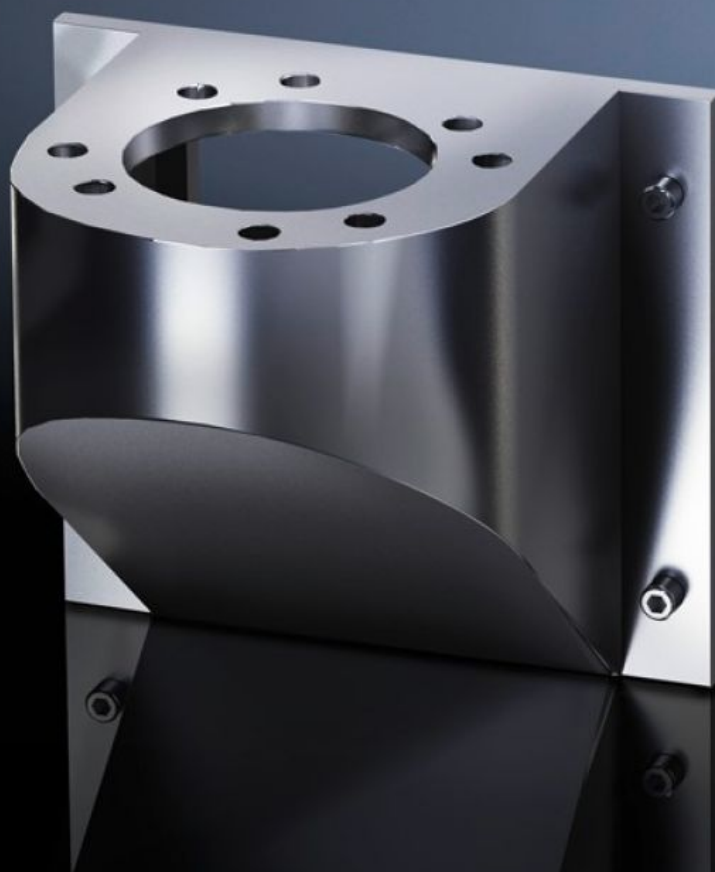
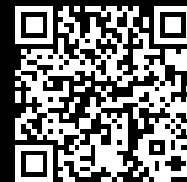


Rittal – The System.

Faster – better – everywhere.



CP 6665.500

Wall console CP 40, stainless steel

State: 9/14/2025 (Source: rittal.com/us-en)

ENCLOSURES

POWER DISTRIBUTION

CLIMATE CONTROL

IT INFRASTRUCTURE

SOFTWARE & SERVICES

FRIEDHELM LOH GROUP



CP 6665.500 - Wall console CP 40, stainless steel

Features

Model No.	CP 6665.500
Version	Front, hole Ø 9 mm
Applications	With drill for installation of Base mounting bracket, swivel, CP 40, stainless steel (6663.500), with 4 screws Wall/base mounting bracket, rigid, CP 40, stainless steel (6663.000), with 4 screws and nuts
Material	Stainless steel 1.4301 (AISI 304)
Protection category IP to IEC 60529	IP 66 acc. to DIN EN 60529, 2014-09 IP X9 acc. to DIN EN 60529, 2014-09
Rifid y/n	Yes
Packaging unit	1 pc(s).
Net weight	1.6
Gross weight	1.755
Customs tariff number	73269098
EAN	4028177184725
ETIM 9	EC000882
ECLASS 8.0	27400556

Approvals

Explanations	Manufacturer's declaration
--------------	----------------------------