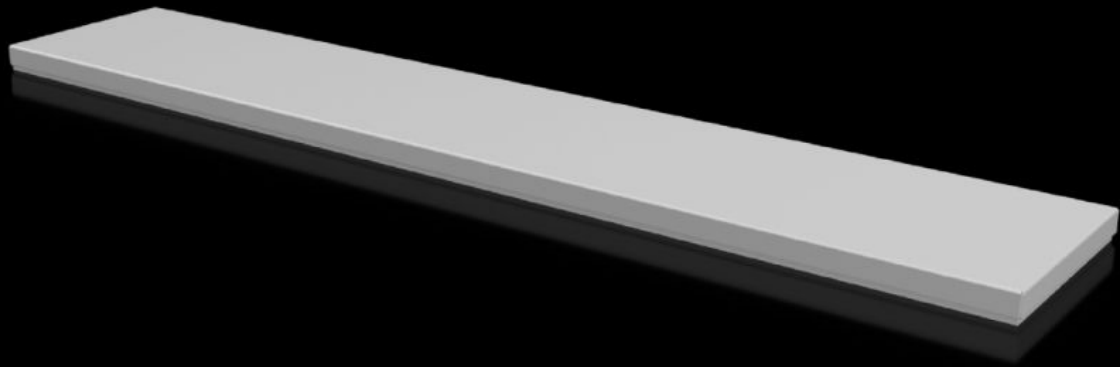


Rittal – The System.

Faster – better – everywhere.



CX 6730.830

Trim panel

State: 4/7/2026 (Source: rittal.com/us-en)

ENCLOSURES

POWER DISTRIBUTION

CLIMATE CONTROL

IT INFRASTRUCTURE

SOFTWARE & SERVICES

FRIEDHELM LOH GROUP



CX 6730.830 - Trim panel For CX console system

For closing the roof opening of CX pedestals and desk units.

Features

Model No.	CX 6730.830
Material	Carbon steel
Surface finish	Textured paint
Color	RAL 7035
Supply includes	Assembly components
Suitable for	Enclosure type: CX Desk Unit Width: = 1,200 mm Enclosure type: CX Desk Unit Width: = 47.2 "
Protection category NEMA	NEMA 1 NEMA 12
Protection category IP to IEC 60529	IP 55
Packaging unit	1 pc(s).
Net weight	5.3 kg
Gross weight	5.44 kg
Customs tariff number	94039910
ETIM 9	EC000784
ETIM 8	EC000784
ECLASS 8.0	27180504
Product description	CX closure plate, for CX desk unit, for width: 1200 mm, steel sheet

Approvals

Approvals

Approvals	UL + C-UL (listed)
Explanations	Declaration of conformity
