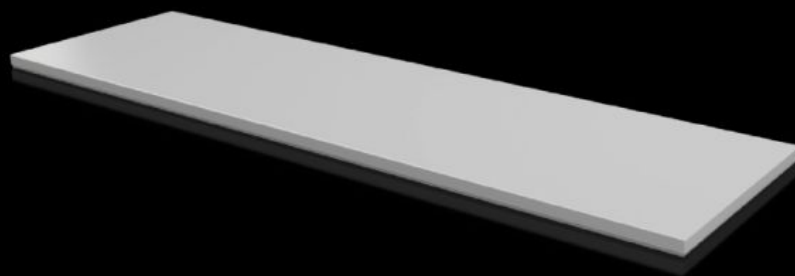


# Rittal – The System.

Faster – better – everywhere.



## CX 6730.970

## Trim panel

State: 4/3/2026 (Source: [rittal.com/us-en](http://rittal.com/us-en))

ENCLOSURES

POWER DISTRIBUTION

CLIMATE CONTROL

IT INFRASTRUCTURE

SOFTWARE & SERVICES

FRIEDHELM LOH GROUP



# CX 6730.970 - Trim panel For CX console system

For closing the roof opening of CX pedestals and desk units.

## Features

Model No.	CX 6730.970
Material	Carbon steel
Surface finish	Textured paint
Color	RAL 7035
Supply includes	Assembly components
Suitable for	Enclosure type: CX Pedestal Width: = 1,600 mm Depth: = 500 mm Enclosure type: CX Pedestal Width: = 63 " Depth: = 19.7 "
Protection category NEMA	NEMA 1 NEMA 12
Protection category IP to IEC 60529	IP 55
Packaging unit	1 pc(s).
Net weight	12.6 kg
Gross weight	12.8 kg
Customs tariff number	94039910
ETIM 9	EC000784
ETIM 8	EC000784
ECLASS 8.0	27180504
Product description	CX closure plate, for CX pedestal, for WHD: 1600x500 mm, carbon steel

# Approvals

---

Approvals	UL + C-UL (listed)
Explanations	Declaration of conformity

---