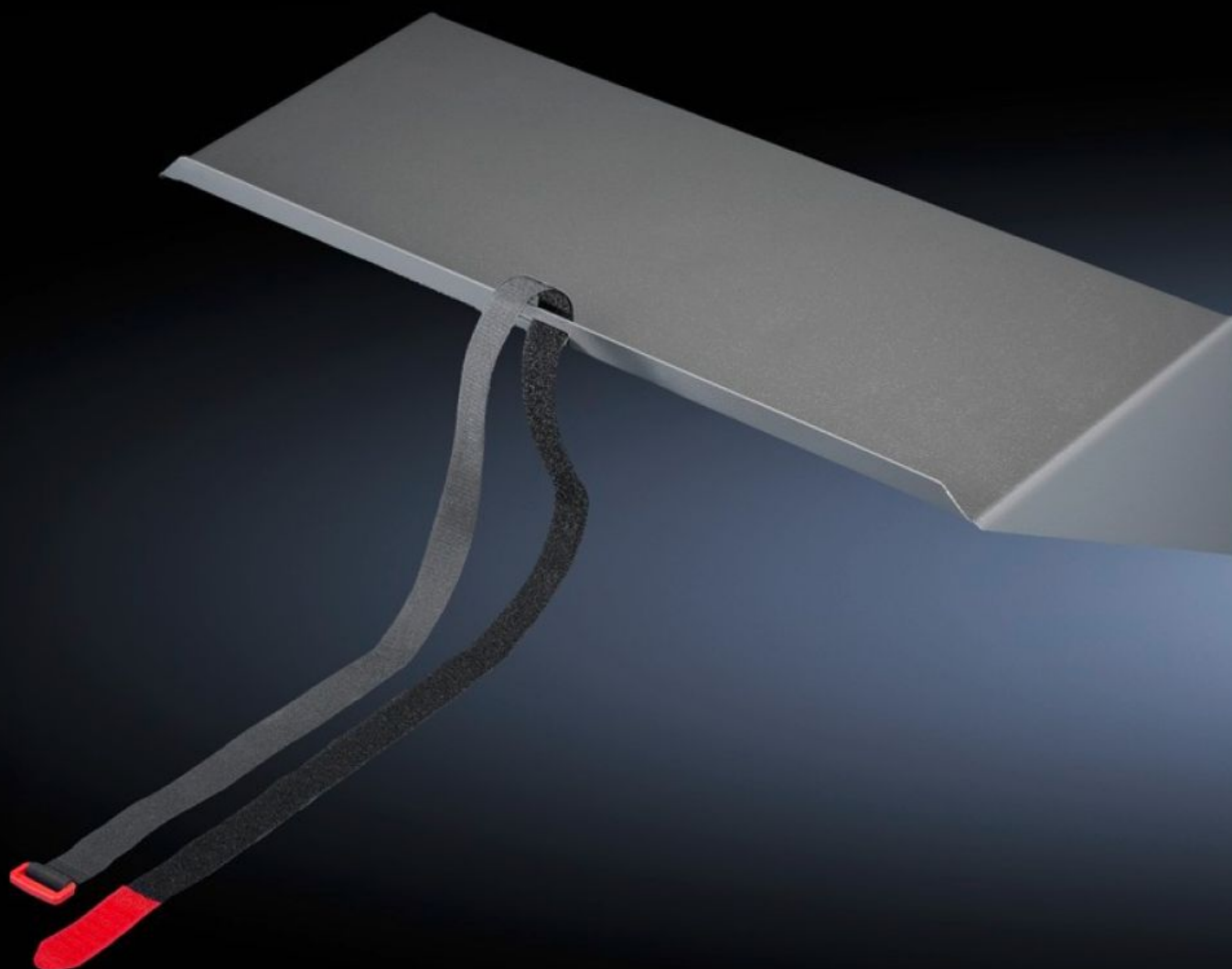


# Rittal – The System.

Faster – better – everywhere.



## IW 6902.950 Base

State: 12/24/2025 (Source: [rittal.com/us-en](http://rittal.com/us-en))

ENCLOSURES

POWER DISTRIBUTION

CLIMATE CONTROL

IT INFRASTRUCTURE

SOFTWARE & SERVICES

FRIEDHELM LOH GROUP



# IW 6902.950 - Base for tubular door frame

The space-saving alternative instead of device shelves for holding tower PCs (max 20 kg). For screwing to the tubular door frame of 600 mm wide enclosures.

## Features

Model No.	IW 6902.950
Product description	The space-saving alternative instead of device shelves for holding tower PCs (max 20 kg). For screwing to the tubular door frame of 600 mm wide enclosures.
Material	Carbon steel
Surface finish	Spray-finished
Color	RAL 7015
Supply includes	Retaining strap Fasteners Support Strip
Dimensions	Width: 445 mm Height: 159 mm Depth: 230 mm Width: 17.5 " Height: 6.26 " Depth: 9.06 "
Load capacity	20 kg
Note	The support strips included in the delivery scope are suitable for a door width of 600 mm
Packaging unit	1 pc(s).
Net weight	4.548
Gross weight	4.748
PCF/VE (cradle-to-gate)	16.4 kg CO2 eq (Cat B)
Information regarding the PCF class	Category B: PCF value (cradle-to-gate) calculated approximately on the basis of the product weight and self-declared
Customs tariff number	94039910

# Features

EAN	4028177438729
ETIM 9	EC002620
ECLASS 8.0	27189261