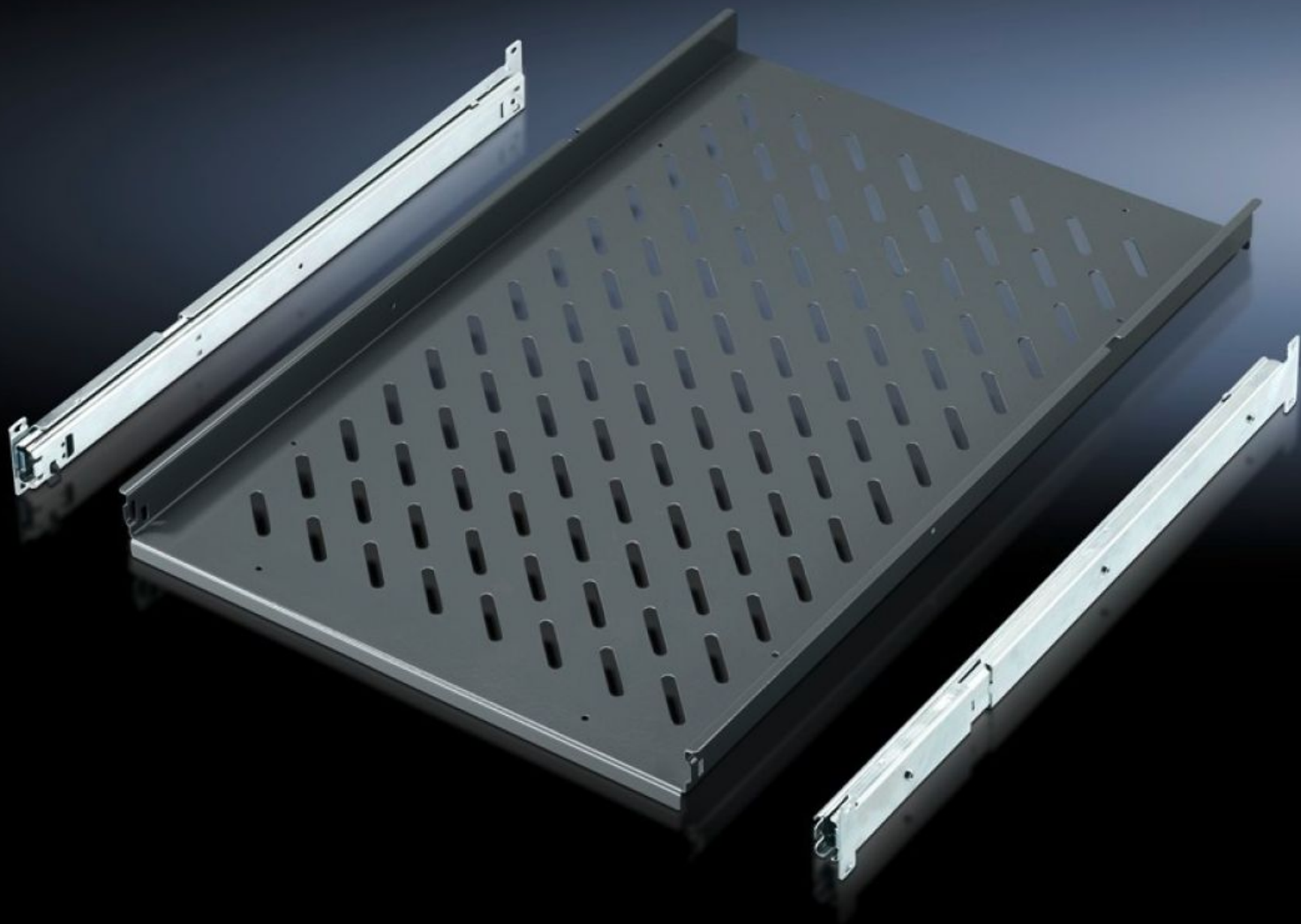
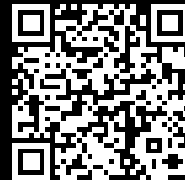


Rittal – The System.

Faster – better – everywhere.



IW 6902.960

Component shelf, pull-out

State: 12/15/2025 (Source: rittal.com/us-en)

ENCLOSURES

POWER DISTRIBUTION

CLIMATE CONTROL

IT INFRASTRUCTURE

SOFTWARE & SERVICES

FRIEDHELM LOH GROUP



IW 6902.960 - Component shelf, pull-out for TS, VX SE, PC, IW

Mounted directly on the vertical TS enclosure profile, enclosure width.

Features

Model No.	IW 6902.960
Applications	On the vertical TS, VX SE enclosure section
Material	Carbon steel
Color	RAL 7015
Supply includes	2 telescopic slides.
Load capacity	30 kg surface load, static
Note	For enclosures without a mounting plate
Note on Model No.:	May also be installed in 800 mm deep enclosures based on TS (pull-out rear attachment).
Support area	Width: 465 mm Depth: 545 mm Width: 18.3 " Depth: 21.5 "
Suitable for	Enclosure type: TS PC IW Width: = 600 mm Depth: = 600 mm = 800 mm Enclosure type: TS PC IW Width: = 23.6 " Depth: = 23.6 " = 31.5 "
Packaging unit	1 pc(s).

Features

Net weight	6.854
Gross weight	7.215
PCF/VE (cradle-to-gate)	29.7 kg CO2 eq (Cat B)
Information regarding the PCF class	Category B: PCF value (cradle-to-gate) calculated approximately on the basis of the product weight and self-declared
Customs tariff number	94039910
EAN	4028177289864
ETIM 9	EC002620
ECLASS 8.0	27189261