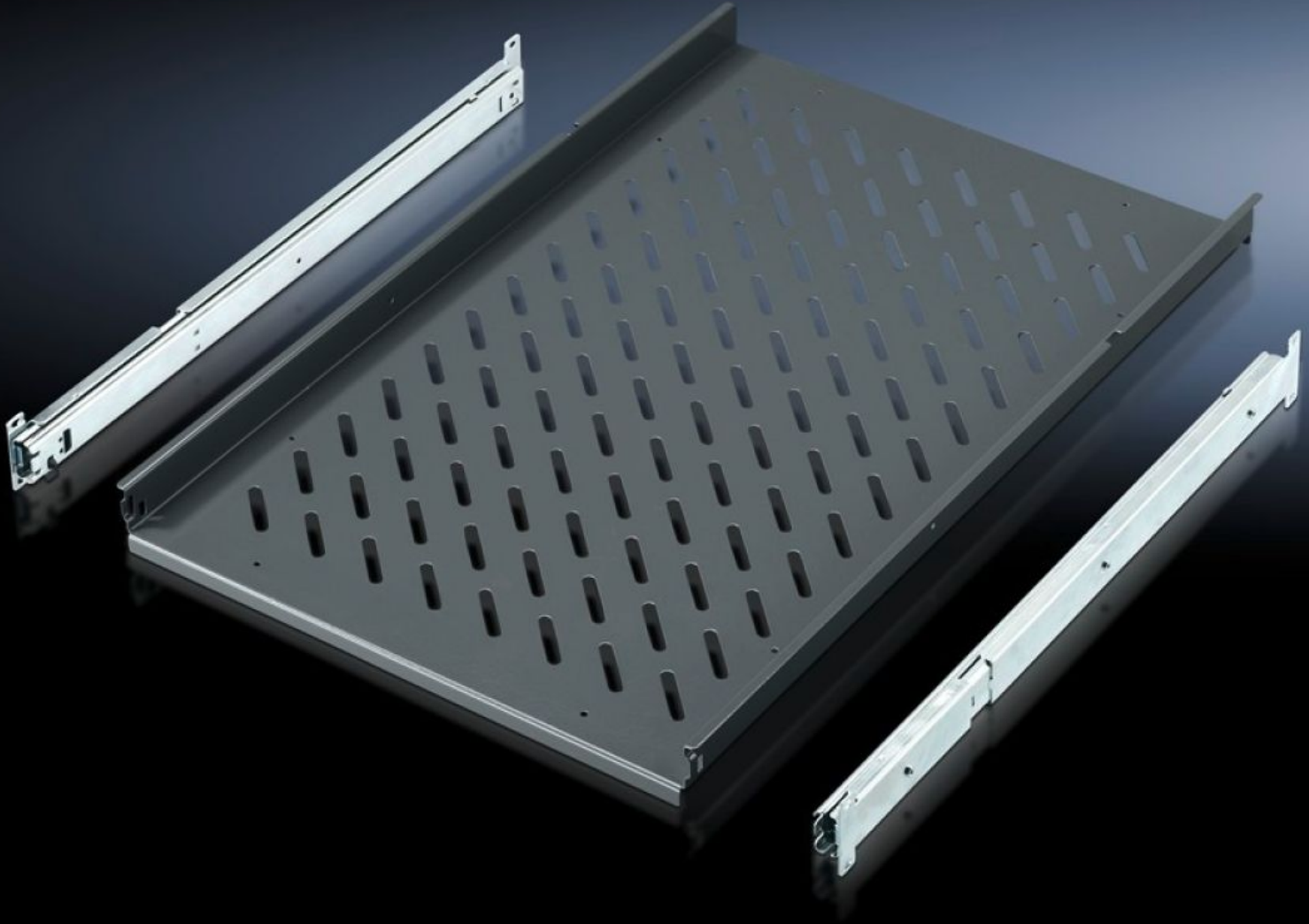


**Rittal – The System.**

Faster – better – everywhere.



**IW 6902.980**

**Component shelf, pull-out**

State: 5/21/2026 (Source: [rittal.com/us-en](http://rittal.com/us-en))

ENCLOSURES

POWER DISTRIBUTION

CLIMATE CONTROL

IT INFRASTRUCTURE

SOFTWARE & SERVICES

FRIEDHELM LOH GROUP



# IW 6902.980 - Component shelf, pull-out for TS, PC, IW

Mounted directly on the vertical TS enclosure profile, enclosure width.

## Features

Model No.	IW 6902.980
Material	Carbon steel
Color	RAL 7015
Supply includes	2 telescopic slides.
Load capacity	30 kg surface load, static
Note	For enclosures without a mounting plate
Support area	Width: 465 mm Depth: 745 mm Width: 18.3 " Depth: 29.3 "
Suitable for	Enclosure type: TS PC IW Width: = 600 mm Depth: = 800 mm Enclosure type: TS PC IW Width: = 23.6 " Depth: = 31.5 "
Packaging unit	1 pc(s).
Net weight	8.393 kg
Gross weight	8.835 kg
PCF/VE (cradle-to-gate)	34.7 kg CO2 eq (Cat B)
Information regarding the PCF class	Category B: PCF value (cradle-to-gate) calculated approximately on the basis of the product weight and self-declared
Customs tariff number	94039910

# Features

---

ETIM 9	EC002620
ECLASS 8.0	27189261
Product description	IW Component shelf, pull-out, for TS, PC, IW, for enclosure depth 800 mm

---