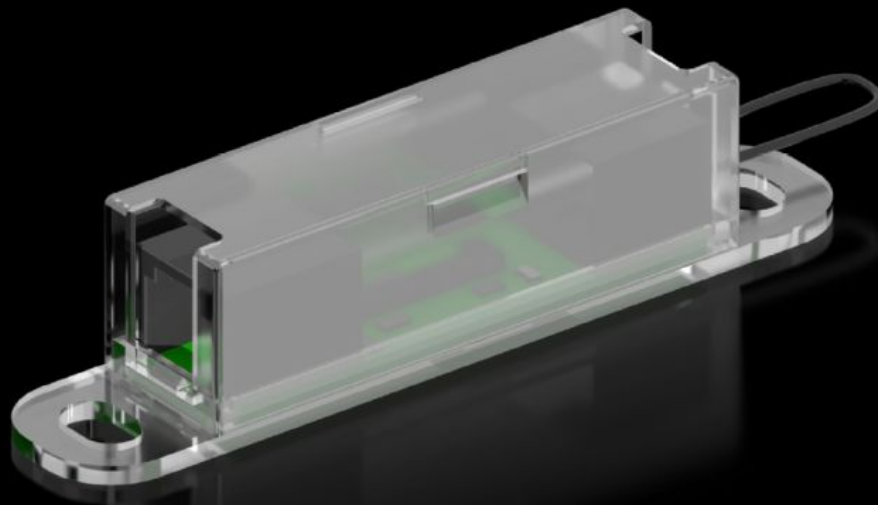


Rittal – The System.

Faster – better – everywhere.



DK 7030.128 CMC III Sensors

State: 5/13/2026 (Source: rittal.com/us-en)

ENCLOSURES

POWER DISTRIBUTION

CLIMATE CONTROL

IT INFRASTRUCTURE

SOFTWARE & SERVICES

FRIEDHELM LOH GROUP



DK 7030.128 - CMC III Sensors

CMC III Access sensor VX

Features

Model No.	DK 7030.128
Version	Access sensor VX
Product description	CMC III sensors are used to monitor the physical environment and can be directly connected to the PU by an RJ45 CAN bus connection cable. The sensors can also be interconnected as a bus.
Benefits	Fast connection and automatic detection via plug & play Power is supplied via the CAN bus interface.
Applications	Enclosure monitoring in IT, industry and facility management Monitoring enclosures, rooms and containers in the field of IT.
Function principle	Adoption of physical ambient parameters
Version	Sensor: Reed Contact/Magnet Max. 5 reed contacts in series
Material	Plastic
Supply includes	Sensor Mounting panel Assembly components Access sensor VX Cable 0.5 m
Connection to the CAN bus	Indirectly via CMC III Can-Bus Interfaces
Operating temperature range	5 °C...45 °C 41 °F...113 °F
Ambient humidity (non-condensing)	5...95 %
Packaging unit	1 pc(s).
Net weight	0.085 kg
Gross weight	0.09 kg

Features

PCF/VE (cradle-to-gate)	0.3 kg CO2 eq (Cat B)
Information regarding the PCF class	Category B: PCF value (cradle-to-gate) calculated approximately on the basis of the product weight and self-declared
Customs tariff number	85319000
ETIM 9	EC002627
ECLASS 8.0	27189253
Product description	CMC III Access sensor VX

Approvals

Explanations	Declaration of conformity
--------------	---------------------------