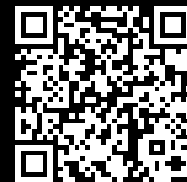


Rittal – The System.

Faster – better – everywhere.



DK 7050.035

Accommodation System, 2 U

State: 2/11/2026 (Source: rittal.com/us-en)

ENCLOSURES

POWER DISTRIBUTION

CLIMATE CONTROL

IT INFRASTRUCTURE

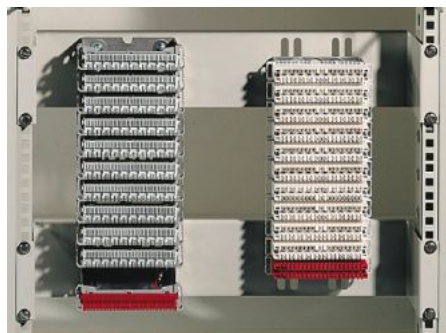
SOFTWARE & SERVICES

FRIEDHELM LOH GROUP



DK 7050.035 - Accommodation System, 2 U for LSA installation kit

For LSA installation kit, to accommodate LSA mounting troughs/universal mounting brackets on the 482.6 mm (19") mounting level.



Features

Model No.	DK 7050.035
Product description	To accommodate LSA support systems on the 482.6 mm (19") mounting level.
Material	Carbon steel
Surface finish	Spray-finished
Color	RAL 7035
Supply includes	Assembly components
Dimensions	Depth: 98.5 mm Depth: 3.88 "
Packaging unit	2 pc(s).
Net weight	1.204
Gross weight	1.38
PCF/VE (cradle-to-gate)	5.2 kg CO2 eq (Cat B)
Information regarding the PCF class	Category B: PCF value (cradle-to-gate) calculated approximately on the basis of the product weight and self-declared
Customs tariff number	83024900
EAN	4028177166233

Features

ETIM 9	EC002620
ECLASS 8.0	27189261