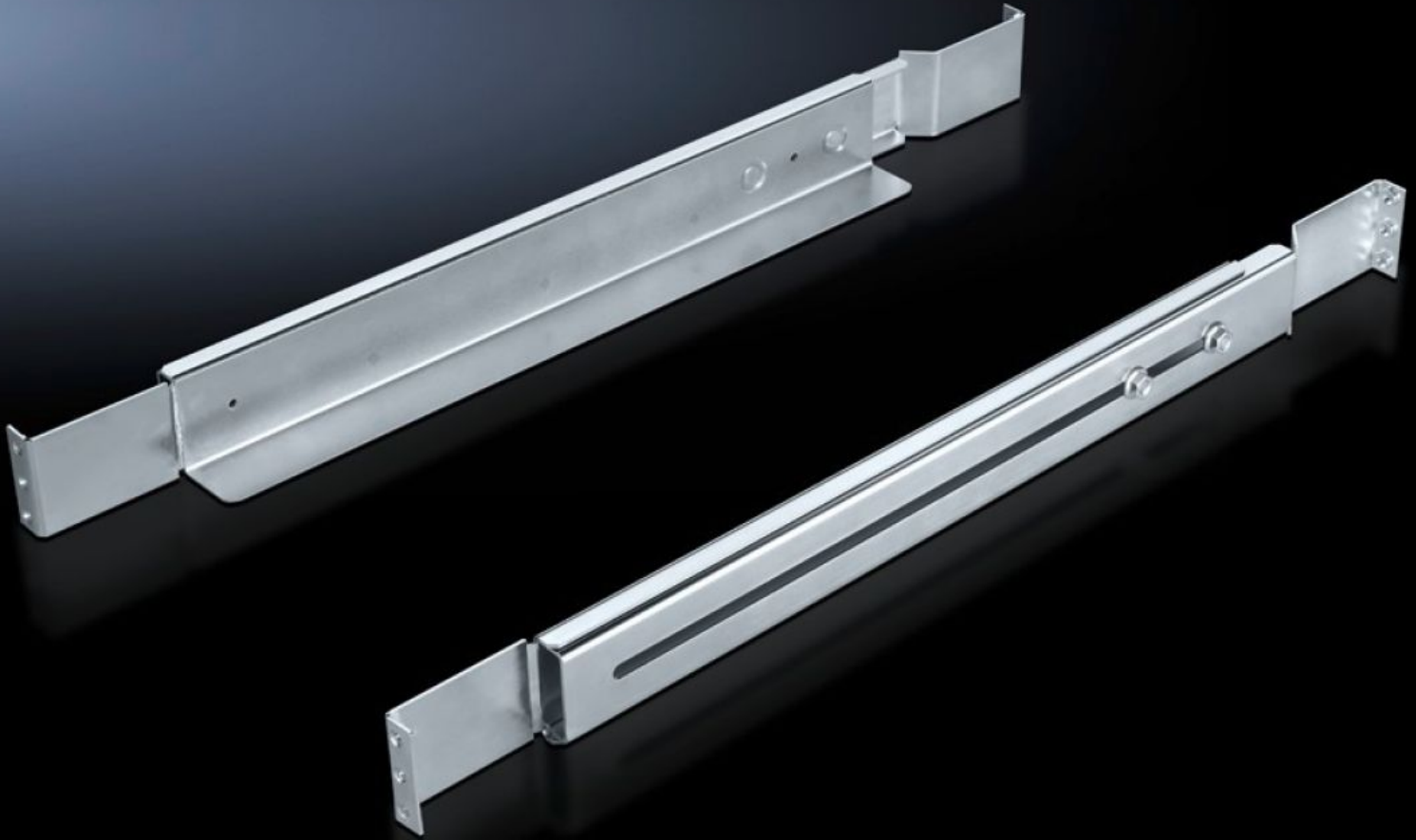


**Rittal – The System.**

Faster – better – everywhere.



# DK 7063.750

## Slide Rails, 1U, Depth-Variable

State: 6/18/2026 (Source: [rittal.com/us-en](http://rittal.com/us-en))

ENCLOSURES

POWER DISTRIBUTION

CLIMATE CONTROL

IT INFRASTRUCTURE

SOFTWARE & SERVICES

FRIEDHELM LOH GROUP



# DK 7063.750 - Slide Rails, 1U, Depth-Variable for VX IT, TE

For server and network enclosures with two 19" mounting levels mounted on right-angled and L profile rails, 482.6 mm (19") mounting frame, pull-out on TE.



## Features

Model No.	DK 7063.750
Product description	For direct attachment to the 482.6 mm (19") system punchings on the profile rails. The slide rails are pulled out to the required length and fastened between the front and rear mounting level on the 19" hole pattern.
Benefits	No loss of U Exceeding the U hole pattern is generally avoided with the this support surface of around 0.8 mm thickness, provided that the components do not exceed a maximum height of 43.5 mm. This way, several units may be easily arranged on top of one another without offset.
Applications	For assembly on the front mounting level
Material	Carbon steel
Surface finish	Zinc-plated
Supply includes	Assembly components
Installation options	For attaching between the front and rear 19" mounting level
Load capacity	20 kg static load
Note	Effective contact surface 30 mm per side
Contact surface	Width: 30 mm Width: 1.18 "

# Features

Distance between levels	390 - 550 mm 15.4 - 21.7 "
Packaging unit	2 pc(s).
Net weight	1.8 kg
Gross weight	1.98 kg
PCF/VE (cradle-to-gate)	7.5 kg CO2 eq (Cat B)
Information regarding the PCF class	Category B: PCF value (cradle-to-gate) calculated approximately on the basis of the product weight and self-declared
Customs tariff number	73269098
ETIM 9	EC002625
ECLASS 8.0	27189234
Product description	DK Slide rail, Support surface Width: 30 mm, 1 U, depth-variable, 20 kg, static, distance between levels: 390-550 mm, For TS IT, TE