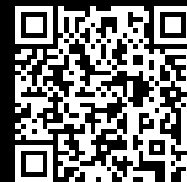


Rittal – The System.

Faster – better – everywhere.



DK 7119.250

**Component Shelf 2 U, Static
Installation**

State: 8/24/2025 (Source: rittal.com/us-en)

ENCLOSURES

POWER DISTRIBUTION

CLIMATE CONTROL

IT INFRASTRUCTURE

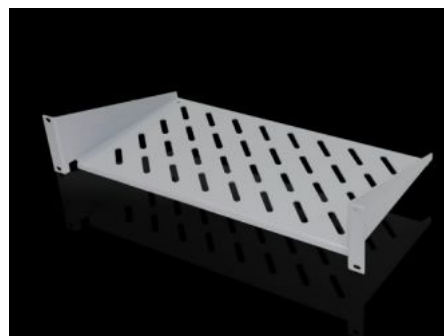
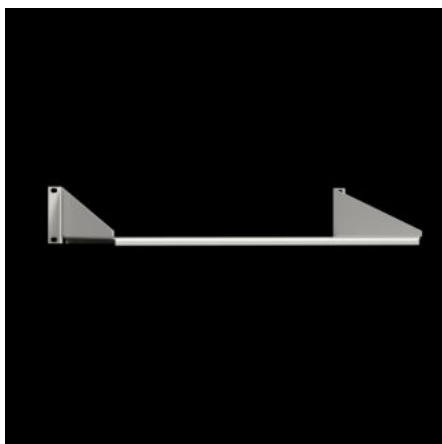
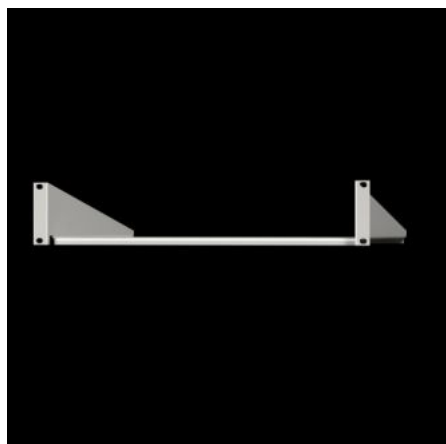
SOFTWARE & SERVICES

FRIEDHELM LOH GROUP



DK 7119.250 - Component Shelf 2 U, Static Installation

Component shelves 2 U, fixed, for attachment to 19" system punchings. Load capacity: 25 kg.



Features

Model No.	DK 7119.250
Version	19"
Product description	Mounted on vertical 482.6 mm (19") rails.
Material	Carbon steel
Surface finish	Spray-finished
Color	RAL 7035
Load capacity	25 kg surface load, static
Note	Not suitable for combination with telescopic slides.
Dimensions	Width: 482.6 mm Depth: 250 mm Width: 19 " Depth: 9.84 "
Packaging unit	1 pc(s).
Net weight	1.92
Gross weight	2.28
PCF/VE (cradle-to-gate)	9 kg CO2 eq (Cat B)

Features

Information regarding the PCF class	Category B: PCF value (cradle-to-gate) calculated approximately on the basis of the product weight and self-declared
Customs tariff number	94039910
EAN	4028177187207
ETIM 9	EC002620
ECLASS 8.0	27189261