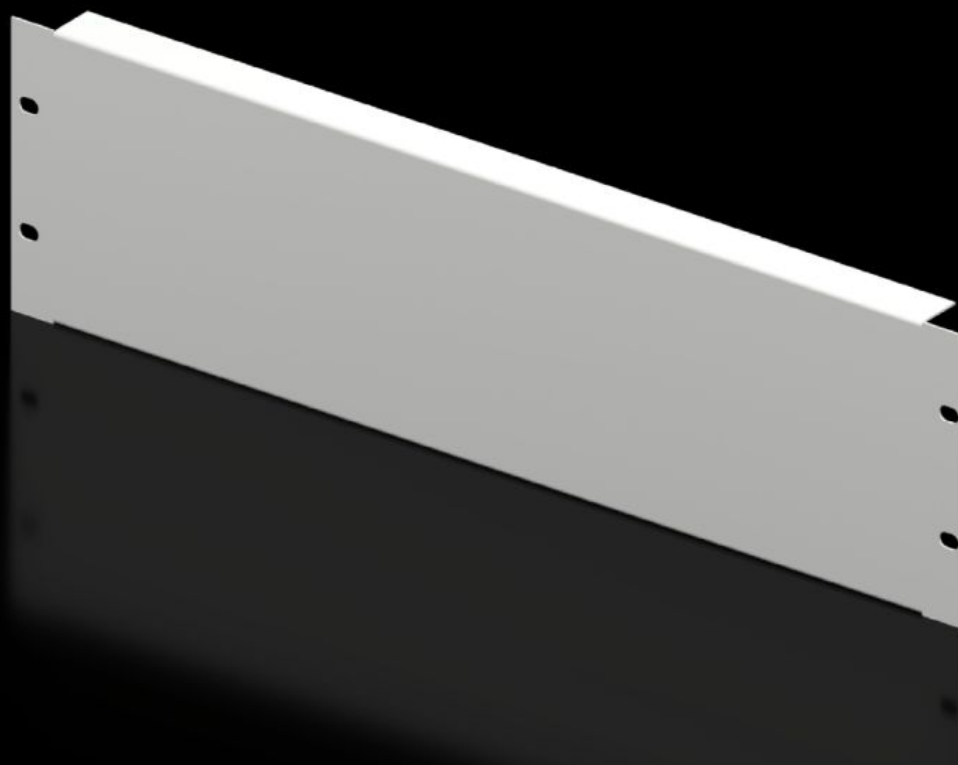


# Rittal – The System.

Faster – better – everywhere.



## DK 7153.035

## Blanking panel, 19" ( 482.6 mm)

State: 1/30/2026 (Source: [rittal.com/us-en](https://www.rittal.com/us-en))

ENCLOSURES

POWER DISTRIBUTION

CLIMATE CONTROL

IT INFRASTRUCTURE

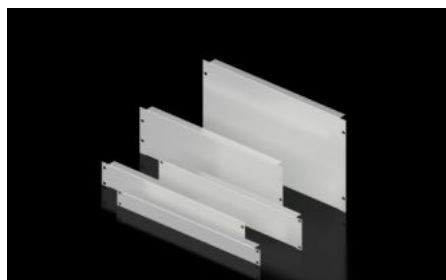
SOFTWARE & SERVICES

FRIEDHELM LOH GROUP



# DK 7153.035 - Blanking panel, 19" ( 482.6 mm)

As a reserve panel cover or for population as required.



## Features

|                                     |  |
|-------------------------------------|--|
| Model No.                           | DK 7153.035  |
| Product description                 | As a reserve panel cover.  |
| Material                            | Carbon steel   |
| Color                               | RAL 7035   |
| Build-up height                     | 132.5 mm<br>5.22 ~   |
| Dimensions                          | Width: 482.6 mm<br>Width: 19 ~   |
| Height units                        | 3 U  |
| Packaging unit                      | 2 pc(s).   |
| Net weight                          | 1.58   |
| Gross weight                        | 1.76   |
| PCF/VE (cradle-to-gate)             | 6.7 kg CO2 eq (Cat B)  |
| Information regarding the PCF class | Category B: PCF value (cradle-to-gate) calculated approximately on the basis of the product weight and self-declared |
| Customs tariff number               | 94039910   |
| EAN                                 | 4028177165762  |
| ETIM 9                              | EC000456   |
| ECLASS 8.0                          | 27189217   |