

Rittal – The System.

Faster – better – everywhere.



DK 7157.035

Blanking panel, 19" (482.6 mm)

State: 1/12/2026 (Source: [rittal.com/us-en](https://www.rittal.com/us-en))

ENCLOSURES

POWER DISTRIBUTION

CLIMATE CONTROL

IT INFRASTRUCTURE

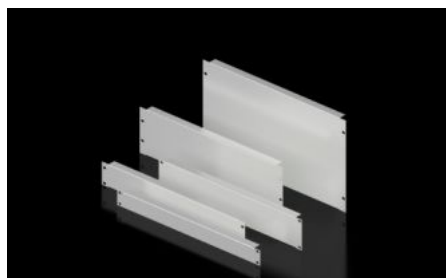
SOFTWARE & SERVICES

FRIEDHELM LOH GROUP



DK 7157.035 - Blanking panel, 19" (482.6 mm)

As a reserve panel cover or for population as required.



Features

Model No.	DK 7157.035
Product description	As a reserve panel cover.
Material	Carbon steel
Color	RAL 7035
Build-up height	66 mm 2.6 "
Dimensions	Width: 482.6 mm Width: 19 "
Height units	1.5 U
Packaging unit	2 pc(s).
Net weight	1
Gross weight	1.022
PCF/VE (cradle-to-gate)	3.9 kg CO2 eq (Cat B)
Information regarding the PCF class	Category B: PCF value (cradle-to-gate) calculated approximately on the basis of the product weight and self-declared
Customs tariff number	94039910
EAN	4028177165786
ETIM 9	EC000456
ECLASS 8.0	27189217