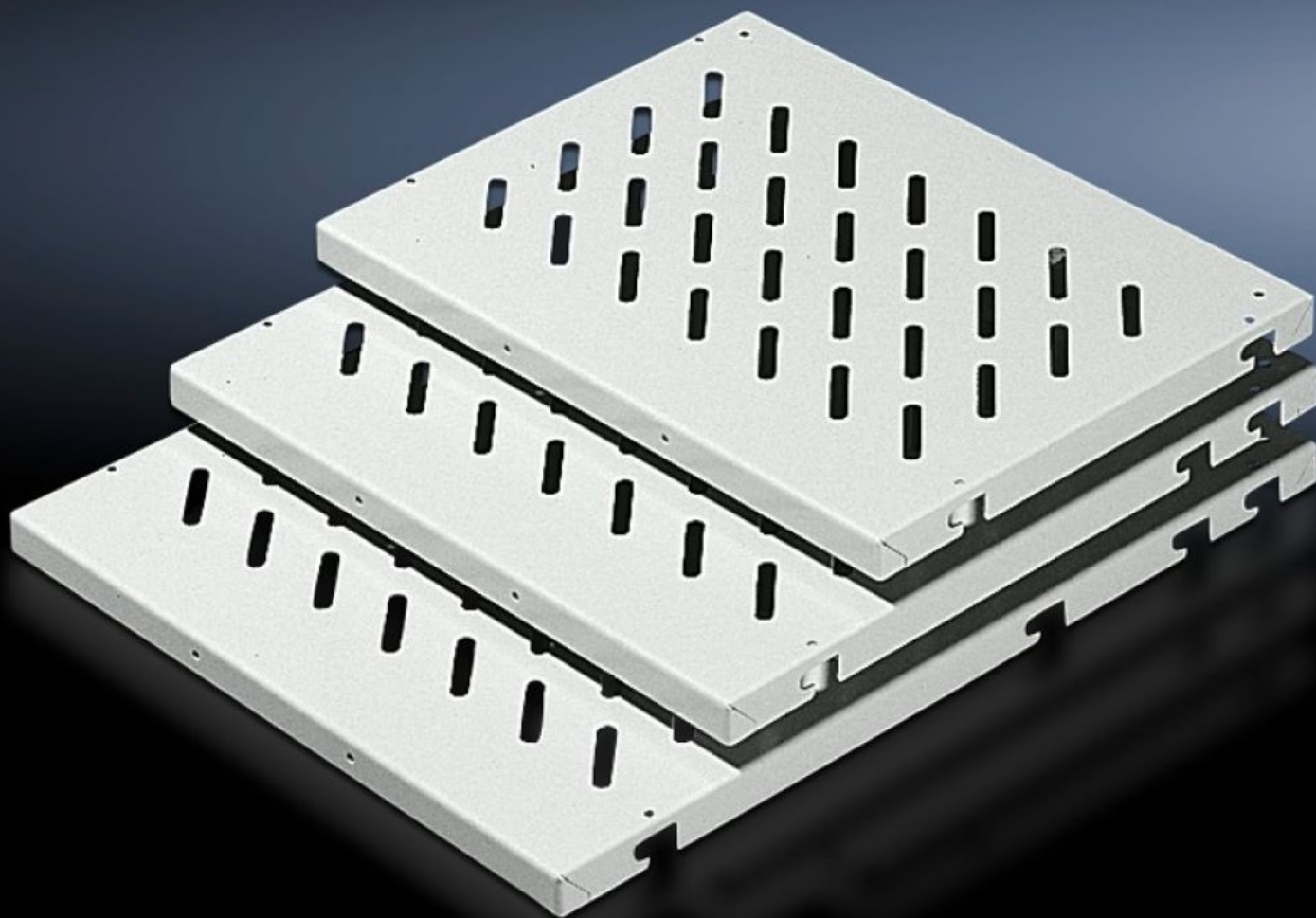


**Rittal – The System.**

Faster – better – everywhere.



**DK 7165.035**

# Component Shelf for Frame Attachment

State: 1/31/2026 (Source: [rittal.com/us-en](https://www.rittal.com/us-en))

ENCLOSURES

POWER DISTRIBUTION

CLIMATE CONTROL

IT INFRASTRUCTURE

SOFTWARE & SERVICES

FRIEDHELM LOH GROUP



# DK 7165.035 - Component Shelf for Frame Attachment for cabinet width 600 mm, 800 mm

For installation in cabinets without 482.6 mm (19") mounting.

## Features

Model No.	DK 7165.035
Version	Slotted
Product description	For frame attachment, installed in enclosures without 482.6 mm (19") accommodation.
Benefits	Mounting bolts or mounting rails may be installed on a 25 mm hole pattern in the enclosure depth Mounting hole for handles provided.
Applications	For installing in enclosures without 482.6 mm (19") feature
Material	Carbon steel
Surface finish	Spray-finished
Color	RAL 7035
Supply includes	Component shelf, slotted 4 pc(s), fixing bolts
Installation options	Static installation: Component shelf, 50 kg with fixing bolts on punched section without mounting flange Static installation: Component shelf, 100 kg with mounting rails on punched sections without mounting flange Depth variable: device base with telescopic rails on mounting chassis
Load capacity	50 kg surface load
Mounting tip	Two system chassis are also required for the inner mounting level
Note	Max. depth of component shelves = Enclosure depth - 100 mm.

# Features

Dimensions	Width: 471 mm Height: 29 mm Depth: 500 mm Width: 18.5 " Height: 1.14 " Depth: 19.7 "
Suitable for	Enclosure type: VX VX IT TS IT Width: 600 mm Enclosure type: VX VX IT TS IT Width: 23.6 "
Packaging unit	1 pc(s).
Net weight	2.78
Gross weight	2.98
PCF/VE (cradle-to-gate)	12.1 kg CO2 eq (Cat B)
Information regarding the PCF class	Category B: PCF value (cradle-to-gate) calculated approximately on the basis of the product weight and self-declared
Customs tariff number	94039910
EAN	4028177165809
ETIM 9	EC002620
ECLASS 8.0	27189261