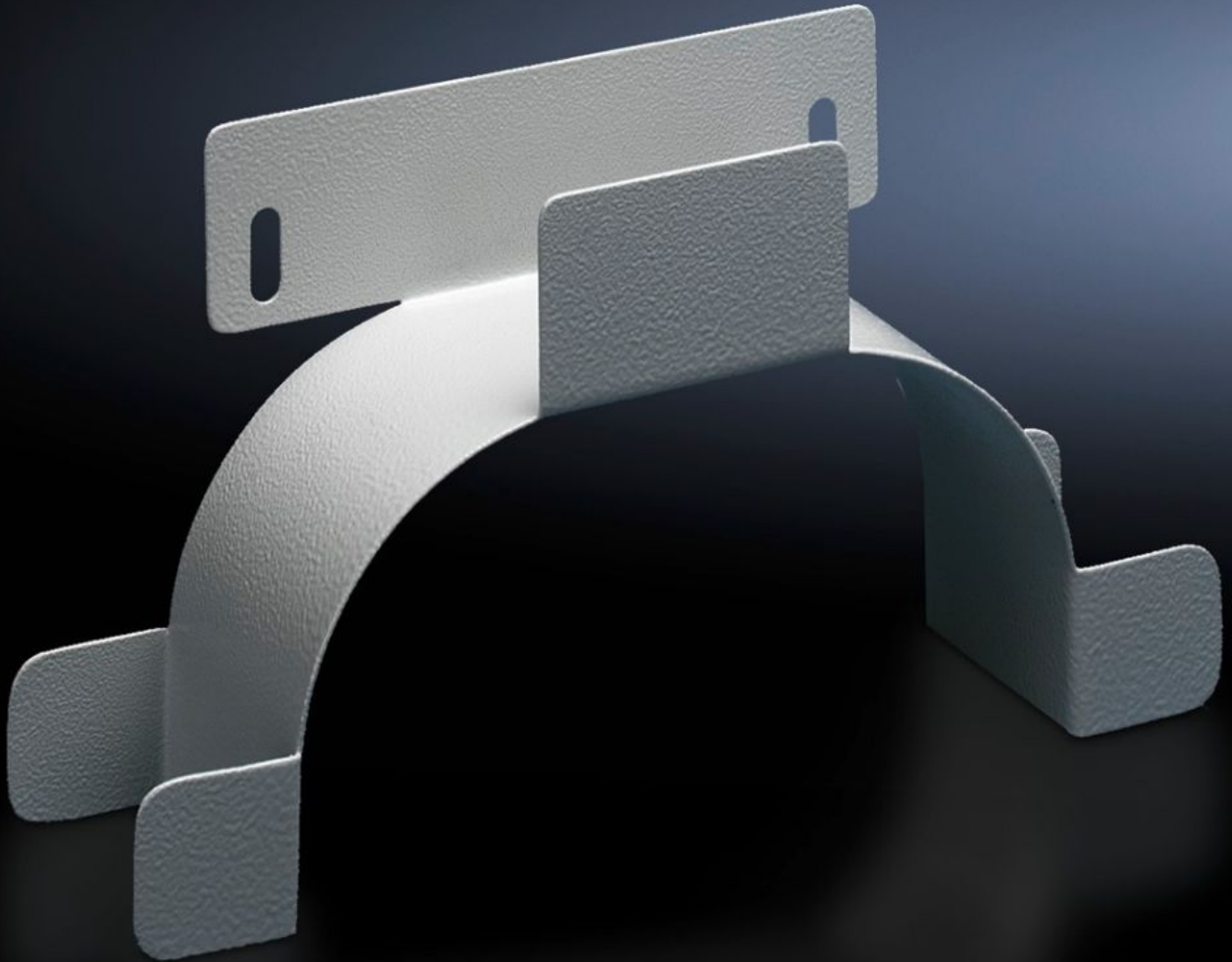


Rittal – The System.

Faster – better – everywhere.



DK 7220.500 Surplus Cable Holder

State: 4/10/2026 (Source: rittal.com/us-en)

ENCLOSURES

POWER DISTRIBUTION

CLIMATE CONTROL

IT INFRASTRUCTURE

SOFTWARE & SERVICES

FRIEDHELM LOH GROUP



DK 7220.500 - Surplus Cable Holder

Fastened at the rear area of the enclosure, or at the side of network enclosures.



Features

Model No.	DK 7220.500
Product description	Fastened at the rear of the enclosure, or on the side of network enclosures. The surplus cable holder can be attached to all depth stays or to chassis and rails with a 25 mm hole pattern, mounting dimensions 150 mm.
Material	Carbon steel
Surface finish	Zinc-plated
Color	RAL 7035
Dimensions	Width: 280 mm Height: 151 mm Depth: 75 mm Width: 11 " Height: 5.94 " Depth: 2.95 "
Packaging unit	1 pc(s).
Net weight	0.56 kg
Gross weight	0.66 kg
PCF/VE (cradle-to-gate)	3.3 kg CO2 eq (Cat B)

Features

Information regarding the PCF class	Category B: PCF value (cradle-to-gate) calculated approximately on the basis of the product weight and self-declared
Customs tariff number	73269098
ETIM 9	EC000322
ECLASS 8.0	27400604
Product description	DK Surplus cable holder, WHD: 280x151x75 mm, For 25 mm pitch pattern, attachment dimensions: 150 mm