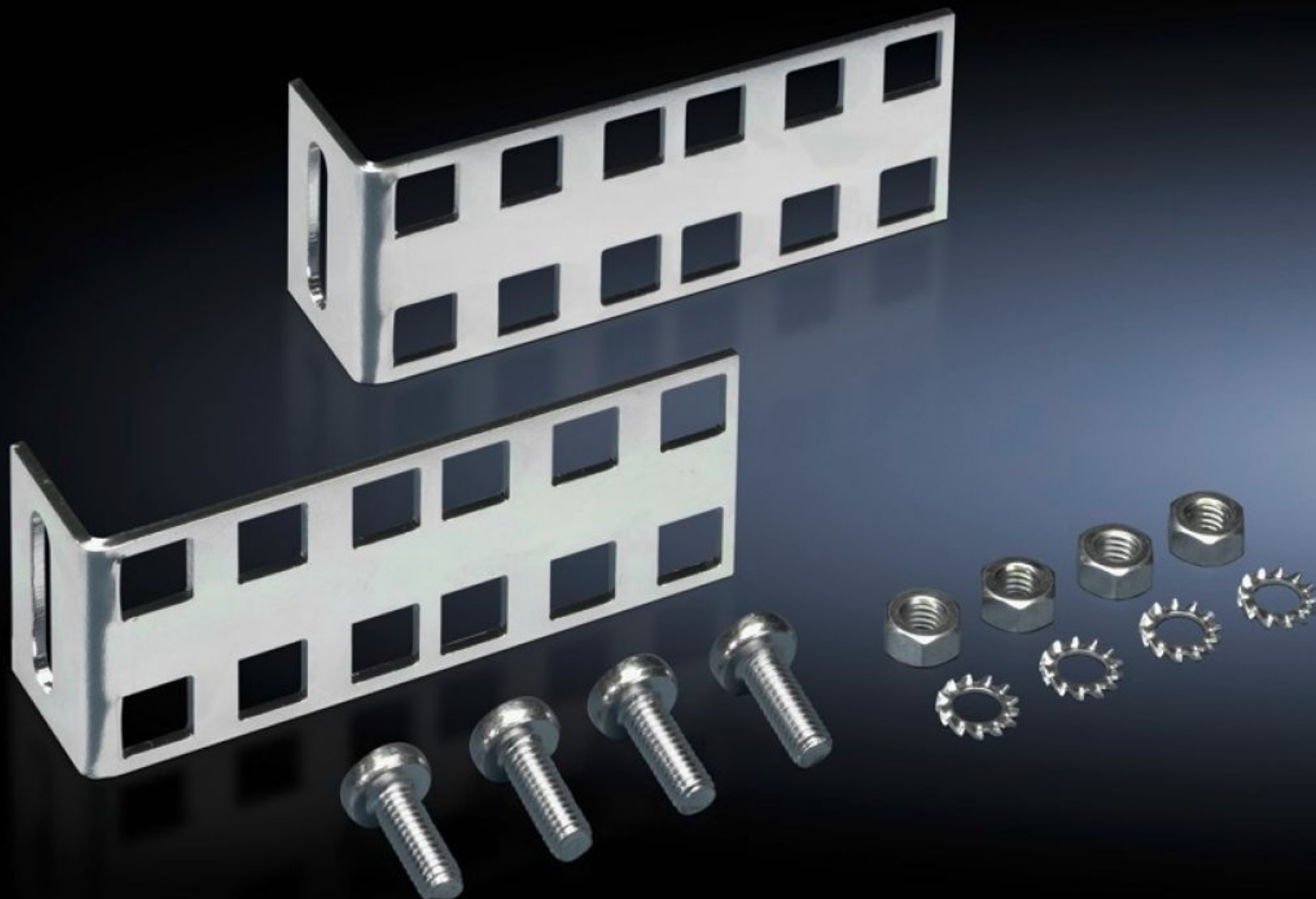
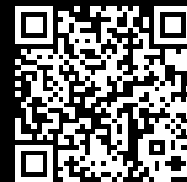


Rittal – The System.

Faster – better – everywhere.



DK 7246.420 Mounting kit, 2U

State: 9/4/2025 (Source: [rittal.com/us-en](https://www.rittal.com/us-en))

ENCLOSURES

POWER DISTRIBUTION

CLIMATE CONTROL

IT INFRASTRUCTURE

SOFTWARE & SERVICES

FRIEDHELM LOH GROUP



DK 7246.420 - Mounting kit, 2U for 19" equipment

Facilitates fast, simple integration of additional 2 U installation space within an enclosure by attaching to the enclosure frame or to the existing profile rails at the sides.



Features

Model No.	DK 7246.420
Product description	Facilitates fast, simple integration of additional 2 U installation space within a housing by attaching to the enclosure frame or to the existing profile rails at the sides. The flexible slot on the bracket allows you to choose the spacing between the two installation brackets so that other imperial attachment dimensions can be used. The second row of holes allows for the optional configuration of further installation areas.
Material	Carbon steel
Surface finish	Zinc-plated
Supply includes	Mounting accessories
Height units	2 U
Packaging unit	2 pc(s).
Net weight	0.172
Gross weight	0.18
PCF/VE (cradle-to-gate)	1.4 kg CO2 eq (Cat B)
Information regarding the PCF class	Category B: PCF value (cradle-to-gate) calculated approximately on the basis of the product weight and self-declared
Customs tariff number	83024900

Features

EAN	4028177435735
ETIM 9	EC002625
ECLASS 8.0	27189234