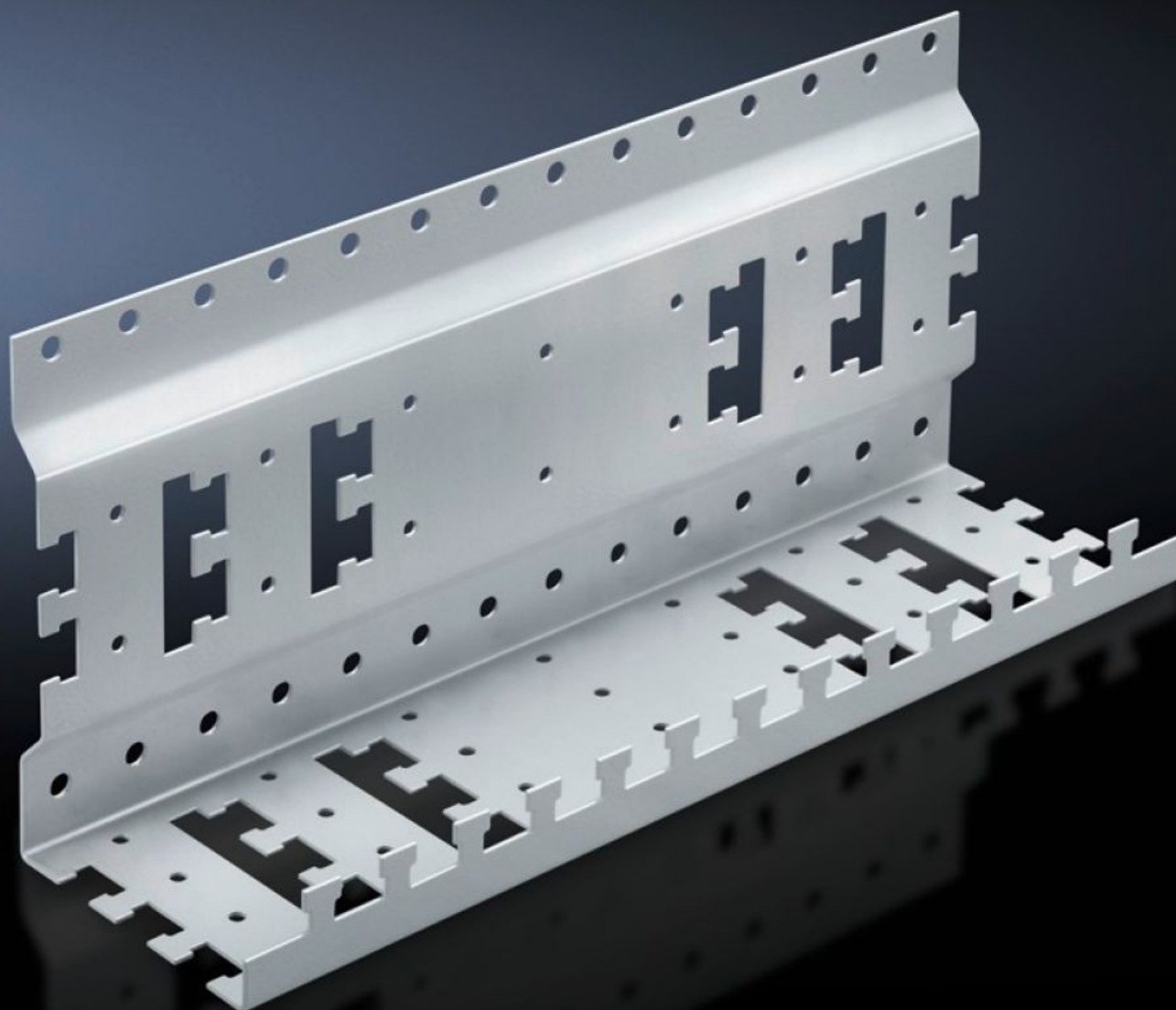


Rittal – The System.

Faster – better – everywhere.



DK 7246.500

Support

State: 7/13/2025 (Source: [rittal.com/us-en](https://www.rittal.com/us-en))

ENCLOSURES

POWER DISTRIBUTION

CLIMATE CONTROL

IT INFRASTRUCTURE

SOFTWARE & SERVICES

FRIEDHELM LOH GROUP



DK 7246.500 - Support for small appliances

Angle-shaped support to securely mount non-19" conforming small appliances.



Features

| | |
|-------------------------|--|
| Model No. | DK 7246.500 |
| Product description | To securely mount non-19" small appliances such as modems, power packs, routers, etc. Angle-shaped support is mounted in the free space at the side between the 482.6 mm (19") level and the side panel on profile rails or chassis. It is quick and easy to attach components and connection cables using Velcro fasteners or cable ties. Also suitable for cable routing in the enclosure depth. |
| Material | Carbon steel |
| Surface finish | Zinc-plated |
| Supply includes | Assembly components |
| Dimensions | Width: 350 mm Height: 150 mm Depth: 97 mm Width: 13.8 " Height: 5.91 " Depth: 3.82 " |
| Packaging unit | 1 pc(s). |
| Net weight | 1.2 |
| Gross weight | 1.411 |
| PCF/VE (cradle-to-gate) | 4.7 kg CO2 eq (Cat B) |

Features

| | |
|-------------------------------------|--|
| Information regarding the PCF class | Category B: PCF value (cradle-to-gate) calculated approximately on the basis of the product weight and self-declared |
| Customs tariff number | 73269098 |
| EAN | 4028177625464 |
| ETIM 9 | EC002620 |
| ECLASS 8.0 | 27189261 |