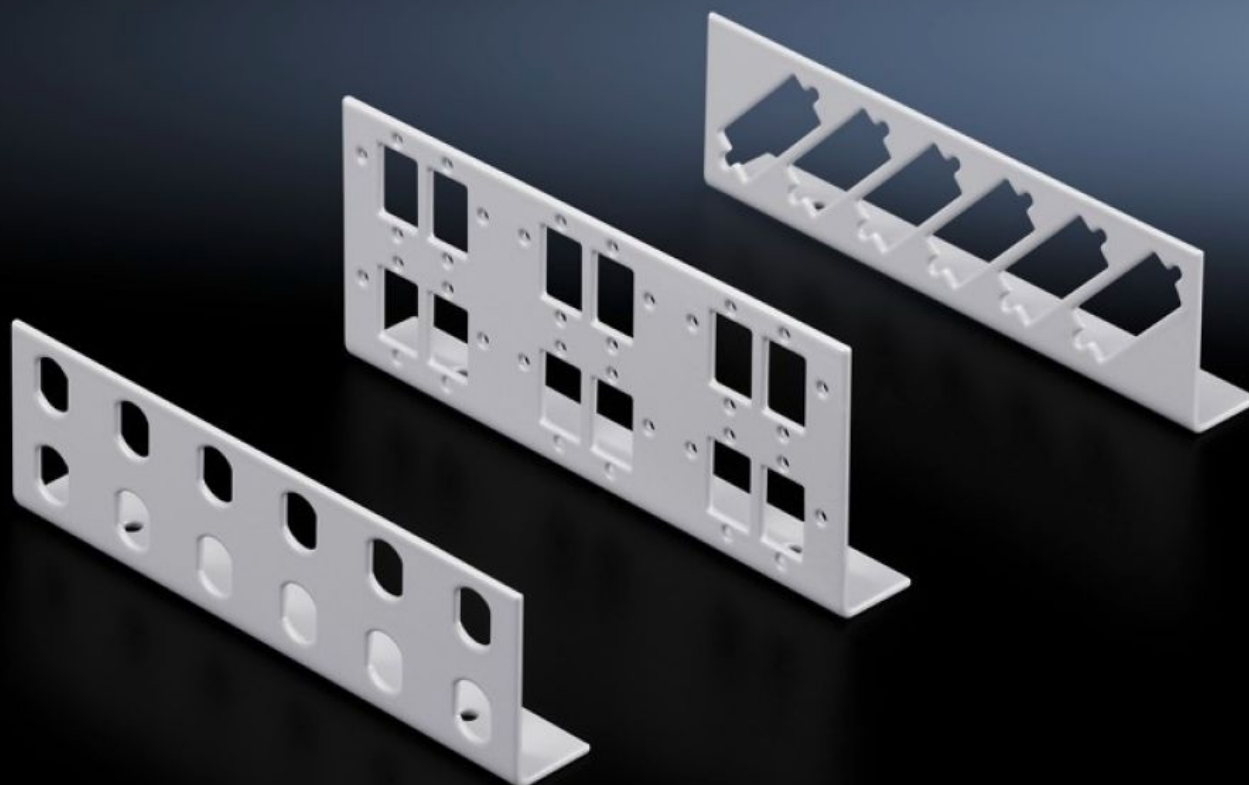


Rittal – The System.

Faster – better – everywhere.



DK 7463.100

Patch panels for small fibre-optic distributors

State: 6/25/2025 (Source: rittal.com/us-en)

ENCLOSURES

POWER DISTRIBUTION

CLIMATE CONTROL

IT INFRASTRUCTURE

SOFTWARE & SERVICES

FRIEDHELM LOH GROUP



DK 7463.100 - Patch panels for small fibre-optic distributors

Patch panel for small fiber optic distributors for ST, SC, E-2000 and E-2000 duplex couplings.

Features

Model No.	DK 7463.100
Version	E-2000 Duplex = 6 locations
Product description	Various patch panels with different connector types are available for individual configuration of small fiber-optic distributors.
Material	Carbon steel
Color	RAL 7035
Supply includes	Patch panel Assembly components
Number of patch panels per enclosure (max.)	2
Base material	Carbon steel
for fiber-optic coupling	SC E-2000 E-2000 duplex
Number of locations	Single: Duplex: 12 6 :
Packaging unit	2 pc(s).
Net weight	0.16
Gross weight	0.191
PCF per pack (cradle-to-gate)	0.7 kg CO2 eq (Cat B)
Note on PCF category	Category B: PCF value (cradle-to-gate) based on the product weight, approximately calculated and self-declared
Customs tariff number	94039910

Features

EAN	4028177187153
ETIM 9	EC001130
ECLASS 8.0	19170113