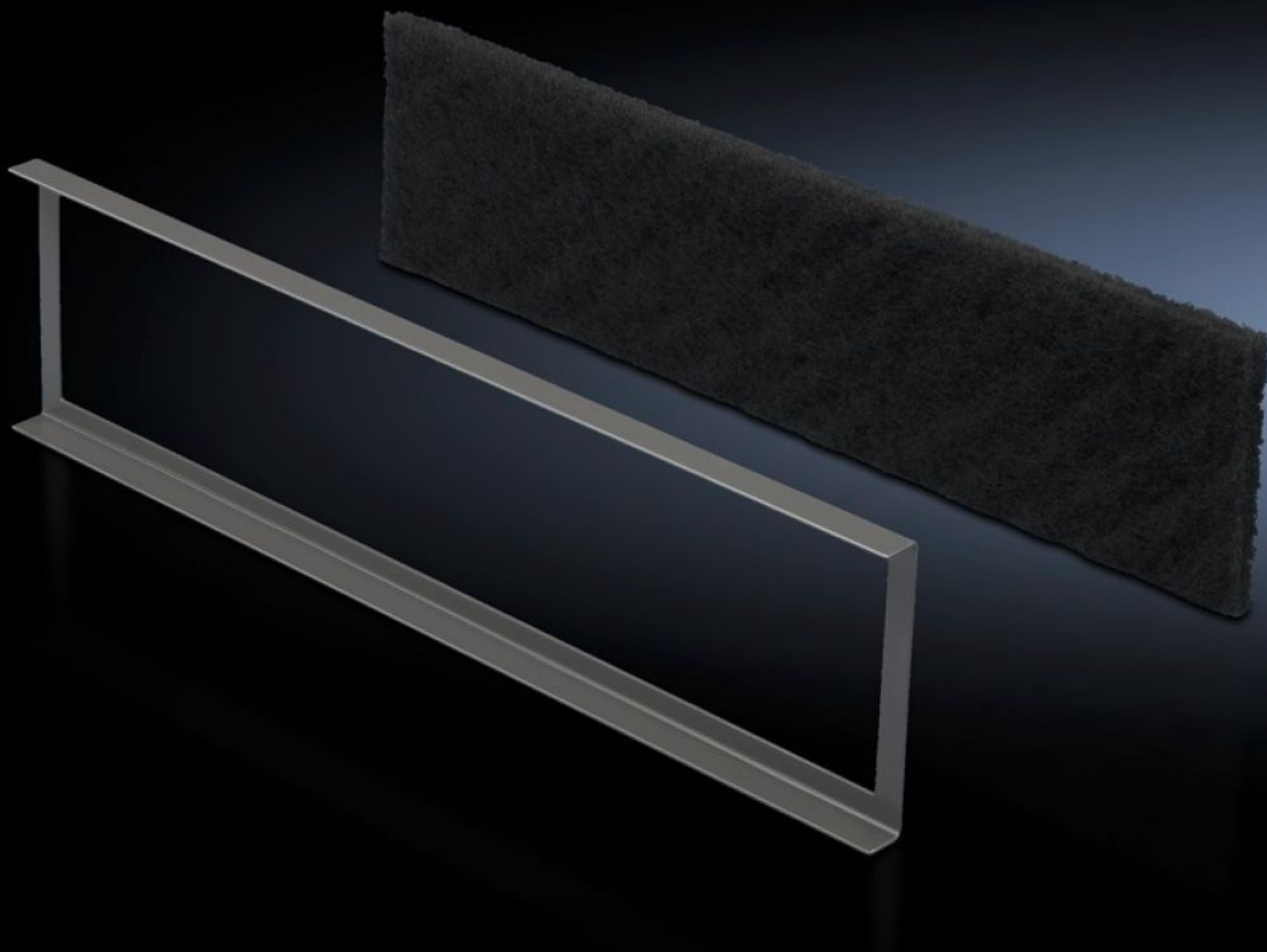


Rittal – The System.

Faster – better – everywhere.



DK 7581.500 Filter Mat

State: 7/28/2025 (Source: [rittal.com/us-en](https://www.rittal.com/us-en))

ENCLOSURES

POWER DISTRIBUTION

CLIMATE CONTROL

IT INFRASTRUCTURE

SOFTWARE & SERVICES

FRIEDHELM LOH GROUP



DK 7581.500 - Filter Mat for base/plinth component, vented and base/plinth component, vented, with designer trim panel

Mounting frame incl. filter mat for the base/plinth trim panel.

Features

Model No.	DK 7581.500
Product description	To cover the trim panel in the base/plinth component. The mounting frame slides into the base/plinth trim panel behind the filter mat. Filter class G3 to DIN EN 779.
Supply includes	Mounting frame
Suitable for	Width: 800 mm Width: 31.5 "
Packaging unit	1 pc(s).
Net weight	0.38
Gross weight	0.42
Customs tariff number	56039390
EAN	4028177221291
ECLASS 8.0	27189272