

Rittal – The System.

Faster – better – everywhere.



AX_IT 7645.350

Wall-mounted housing AX IT

State: 7/18/2025 (Source: rittal.com/us-en)

ENCLOSURES

POWER DISTRIBUTION

CLIMATE CONTROL

IT INFRASTRUCTURE

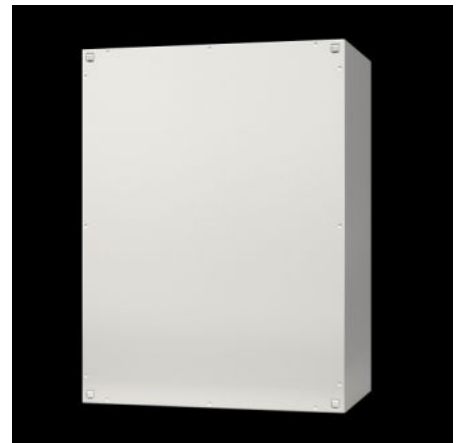
SOFTWARE & SERVICES

FRIEDHELM LOH GROUP



AX_IT 7645.350 - Wall-mounted housing AX IT with 19" (482.6 mm) profile rails, depth-variable

IT wall-mounted enclosure with high protection category for use in industrial environments. With depth-variable 19" mounting angle and gland plate with brush strip for cable entry in the enclosure base. Protection category up to IP 66 (depending on the selected gland plate)



Features

Model No.	AX IT 7645.350
Version	Wall-mounted housing IT with 19" (482.6 mm) profile rails, depth-variable
Product description	IT wall-mounted enclosure based on AX, with high protection category, for use in industrial environments. Secure, protected integration of IT directly into the process in your production plant.
Benefits	<ul style="list-style-type: none">Fully pre-assembled IT enclosure for immediate accommodation of 19" IT components, with depth-adjustable profile railsWelded enclosure construction with fully enclosed body ensures maximum protection for installed components, up to IP 66Door hinged on the right, may be swapped to the leftMaximum usable interior volume with an extremely compact designIndividual interior configurationMaximum cut-out in the enclosure base with optimized gland plates increases cable routing space by up to 33%Convenient cable entry from below via a gland plate with integrated brush strip
Material	Carbon steel

Features

Surface finish	Housing and door: Dipcoat primed, powder-coated on the outside, textured paint Interior fittings: zinc-plated
Color	RAL 7035
Supply includes	Pre-assembled IT enclosure with hinged door, completely closed Cam lock with 3 mm double-bit insert Gland plate with brush strip 19" mounting angle, front, depth-variable at 25 mm intervals, mounted on 4 interior installation rails Mounting Bracket C rail, mounted on the rear panel
Height units	15 U
Dimensions	Width: 600 mm Height: 760 mm Depth: 350 mm Width: 23.6 " Height: 29.9 " Depth: 13.8 "
Installation depth	278 mm 10.9 "
Installation height for components	15 U
Position door catch	right, may be swapped to the left
No. of locks	2
Installation options	Pre-assembled mounting bracket, including C-profile rail for cable clamp Mounting bracket for mounting a central grounding rail Mounting bracket for mounting a 19" socket strip
Note	Variant with UL approval available on request
Base material	Carbon steel
Lock	Lock version: Cam with 3 mm double-bit lock insert No. of locks: 2
Protection category IP to EN 60529	IP 10 (up to IP 66 on request) Up to IP 66 (depending on the selected flange plate)

Features

Gland plate	Size: 7 Qty.: 1
No. of locks	2
Packaging unit	1 pc(s).
Net weight	29
Gross weight	29.64
PCF/VE (cradle-to-gate)	112.9 kg CO2 eq (Cat B)
Information regarding the PCF class	Category B: PCF value (cradle-to-gate) calculated approximately on the basis of the product weight and self-declared
Customs tariff number	94032080
EAN	4028177942417
E-Number Sweden	E7238509
ETIM 9	EC002500
ECLASS 8.0	27180208

Approvals

Explanations	Declaration of conformity Declaration of conformity UK
--------------	---