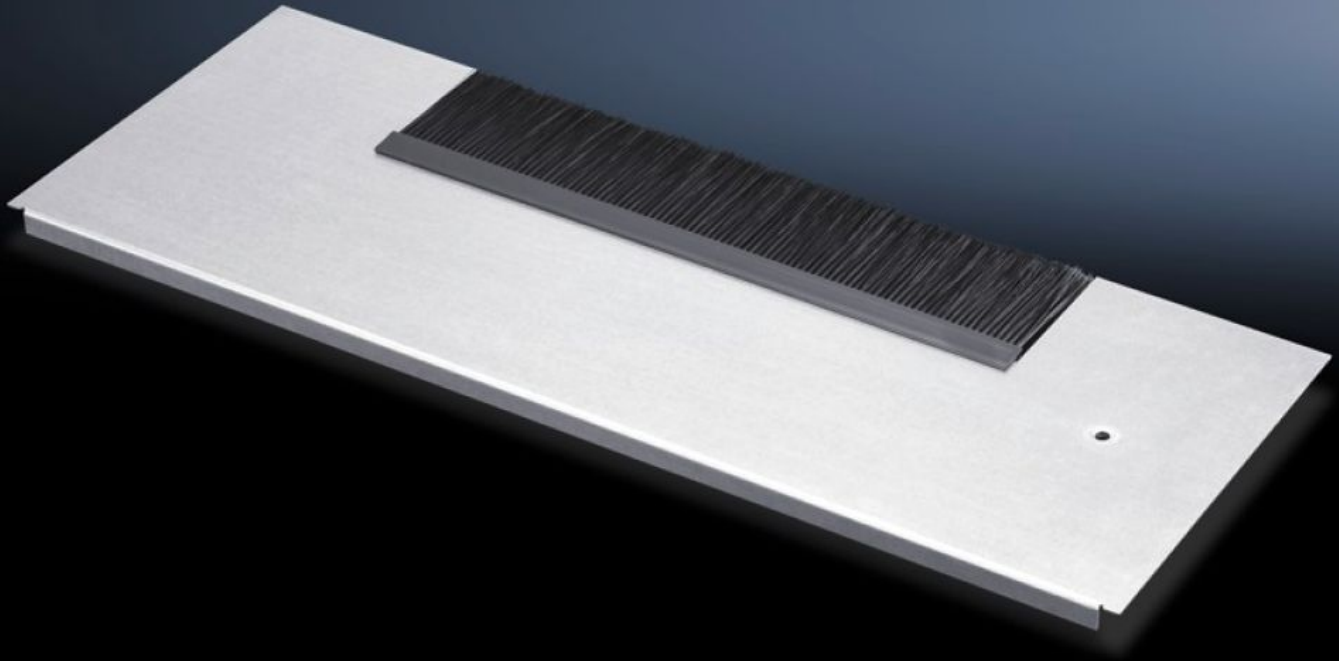


Rittal – The System.

Faster – better – everywhere.



DK 7825.381

Base plate modules for cable entry

State: 4/6/2026 (Source: rittal.com/us-en)

ENCLOSURES

POWER DISTRIBUTION

CLIMATE CONTROL

IT INFRASTRUCTURE

SOFTWARE & SERVICES

FRIEDHELM LOH GROUP



DK 7825.381 - Base plate modules for cable entry for TS IT, TS, SE, TX CableNet

Base plate module for cable entry for TS, TS-IT, SE, for use in the base frame of the network enclosure. To replace an existing base plate of the same depth.

Features

Model No.	DK 7825.381
Product description	For simple, sealed cable entry.
Material	Module plate: Carbon steel Brush strip: Plastic, UL 94-HB, halogen-free
Surface finish	Zinc-plated
Note	Several base plate modules need to be combined to close off the base completely in the TS-IT
Dimensions	Depth: 237.5 mm Depth: 9.35 "
Suitable for	Enclosure type: TS IT TS VX SE TX CableNet Width: 800 mm Enclosure type: TS IT TS VX SE TX CableNet Width: 31.5 "
Packaging unit	1 pc(s).
Net weight	1.75 kg
Gross weight	1.78 kg
PCF/VE (cradle-to-gate)	7.4 kg CO2 eq (Cat B)
Information regarding the PCF class	Category B: PCF value (cradle-to-gate) calculated approximately on the basis of the product weight and self-declared

Features

Customs tariff number	94039910
ETIM 9	EC002620
ECLASS 8.0	27189261
Product description	DK base plate module, for cable entry with brush, depth: 237.5 mm, for enclosure width: 800 mm, for TS, TS IT, SE, TX CableNet, carbon steel, zinc-plated