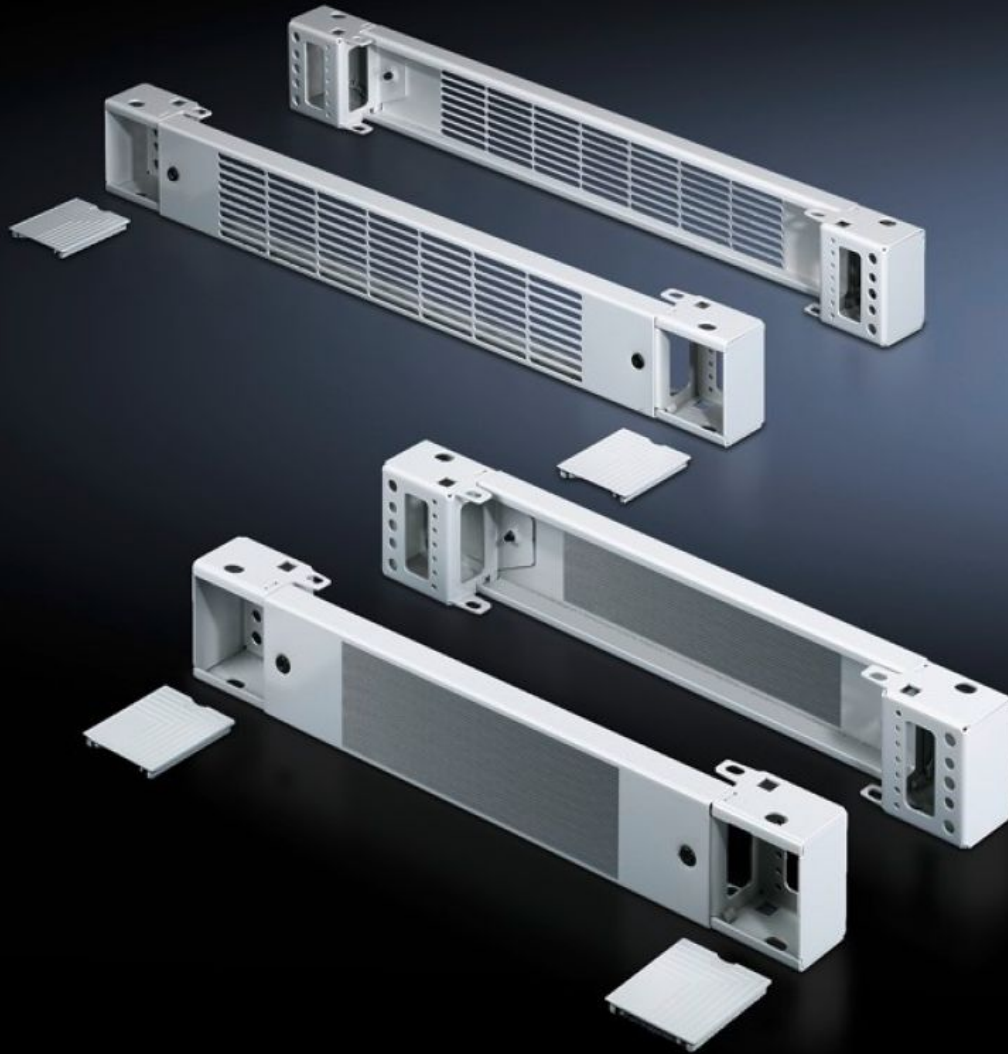


Rittal – The System.

Faster – better – everywhere.



TS 7825.801

Base/plinth components, front and rear, 100 mm

State: 6/21/2026 (Source: rittal.com/us-en)

ENCLOSURES

POWER DISTRIBUTION

CLIMATE CONTROL

IT INFRASTRUCTURE

SOFTWARE & SERVICES

FRIEDHELM LOH GROUP



TS 7825.801 - Base/plinth components, front and rear, 100 mm Carbon steel, for TS, TS IT, SE, CM, TP, PC, IW, TE

Base/Plinth component consisting of one trim panel and two pre-assembled corner pieces.

Features

Model No.	TS 7825.801
Version	Vented
Product description	Base/Plinth component consisting of one trim panel and two pre-assembled corner pieces.
Material	Base/plinth components: Carbon steel Cover caps: Plastic
Surface finish	Spray-finished
Color	RAL 7035 Cover caps: RAL 7035
Supply includes	2 base/plinth components 4 cover caps Assembly components
Dimensions	Height: 100 mm Height: 3.94 "
Suitable for	Enclosure type: TS: = 800 mm Enclosure type: SE Enclosure type: CM Enclosure type: TP Enclosure type: PC Enclosure type: IW Enclosure type: TS IT Enclosure type: TS: = 31.5 " Enclosure type: SE Enclosure type: CM Enclosure type: TP Enclosure type: PC Enclosure type: IW Enclosure type: TS IT

Features

Packaging unit	2 pc(s).
----------------	----------

Net weight	3.9 kg
------------	--------

Gross weight	4.337 kg
--------------	----------

Customs tariff number	94039910
-----------------------	----------

ECLASS 8.0	27182003
------------	----------