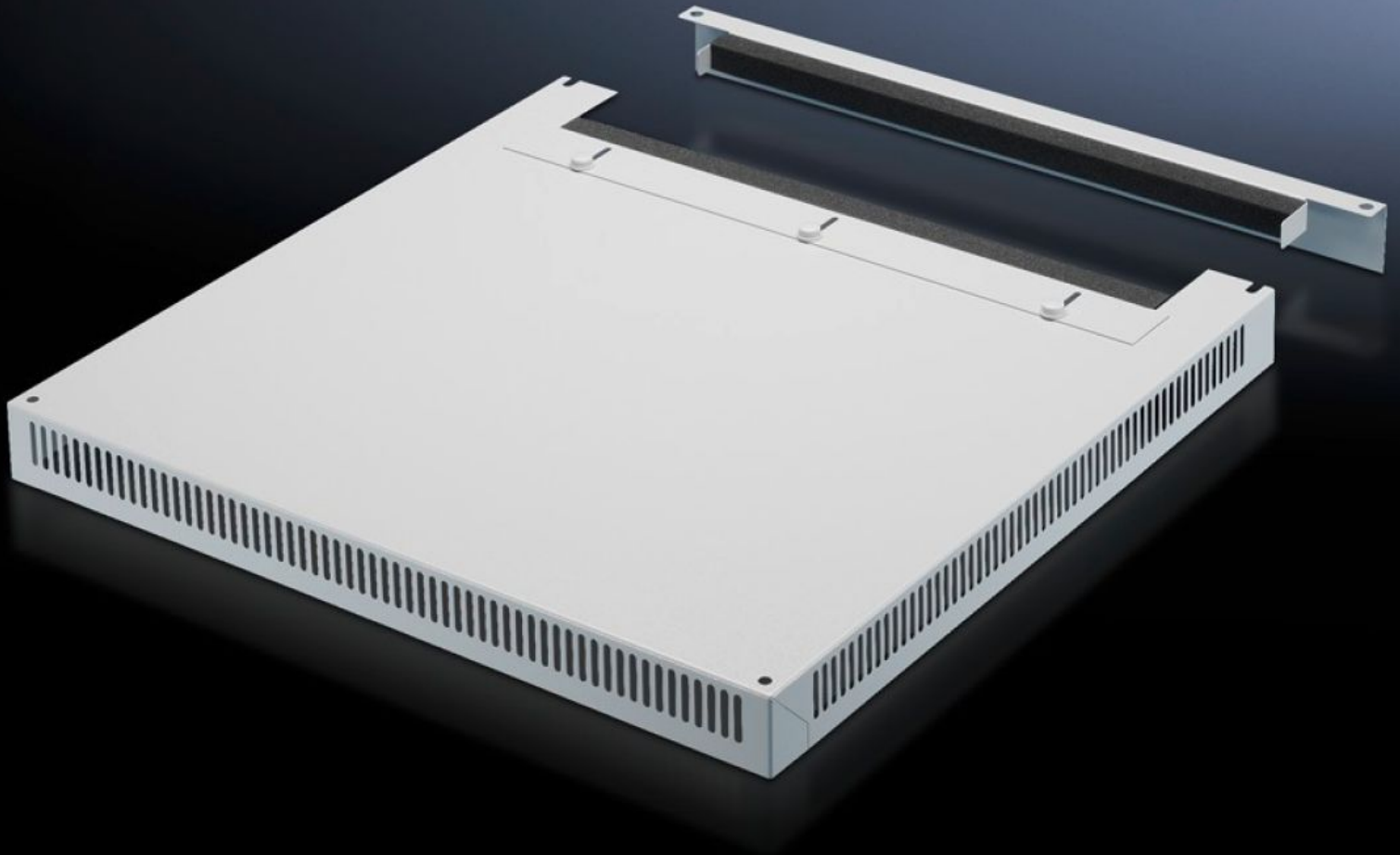


Rittal – The System.

Faster – better – everywhere.



DK 7826.689

Roof Plate, Vented

State: 6/4/2026 (Source: rittal.com/us-en)

ENCLOSURES

POWER DISTRIBUTION

CLIMATE CONTROL

IT INFRASTRUCTURE

SOFTWARE & SERVICES

FRIEDHELM LOH GROUP



DK 7826.689 - Roof Plate, Vented for TS, TS IT

To replace the standard roof, with and without cable entry.

Features

Model No.	DK 7826.689
Version	Two-piece with cable entry
Product description	To replace standard roof. 72 mm high roof plate, all-round vent slots, clamping profile for cable entry. The two-piece design with cable entry allows for easy retro-fitting.
Material	Carbon steel
Color	RAL 7035
Suitable for	Enclosure type: TS TS IT Width: 600 mm Depth: 800 mm Enclosure type: TS TS IT Width: 23.6 " Depth: 31.5 "
Packaging unit	1 pc(s).
Net weight	8.737 kg
Gross weight	9.197 kg
Customs tariff number	94039910
ETIM 9	EC000744
ECLASS 8.0	27182405
Product description	DK-TS8 Roof plate, WxD: 600x800 mm, 2-part, For cable entry