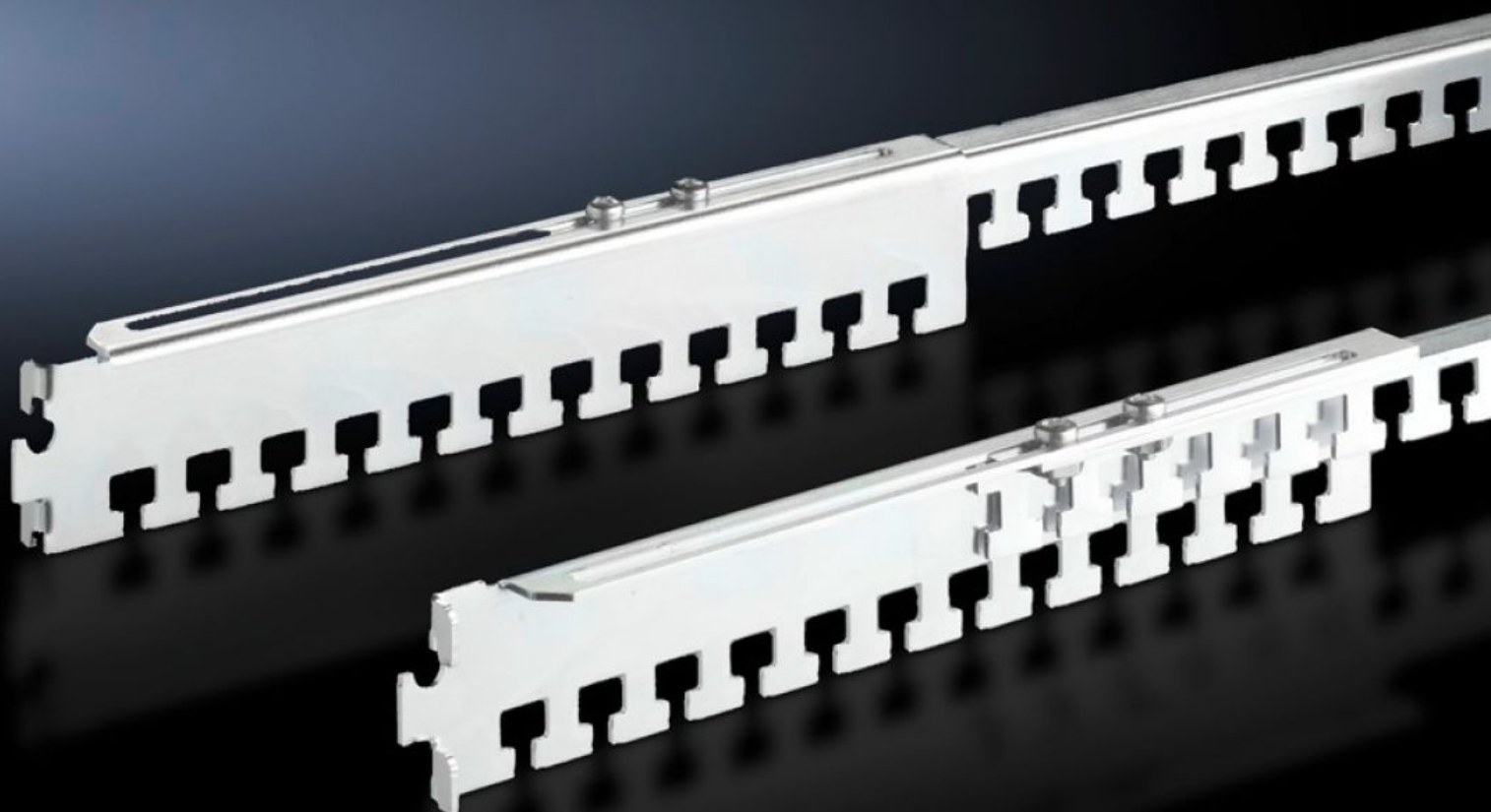


**Rittal – The System.**

Faster – better – everywhere.



**DK 7858.160**

**Cable clamp rails, depth-variable**

State: 12/11/2025 (Source: [rittal.com/us-en](http://rittal.com/us-en))

ENCLOSURES

POWER DISTRIBUTION

CLIMATE CONTROL

IT INFRASTRUCTURE

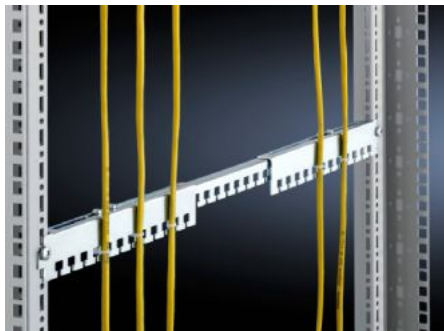
SOFTWARE & SERVICES

FRIEDHELM LOH GROUP



# DK 7858.160 - Cable clamp rails, depth-variable for TS, TE

For TS and 19" mounting frames, allows flexible adjustment of their length to the fastener spacing between the two 19" mounting frames.



## Features

Model No.	DK 7858.160
Product description	For use with TS and between the profile rails of the TS IT in the enclosure depth.
Applications	<p>For cable routing on the enclosure frame and for strain relief of the routed cables. The cables can be attached to the cable clamp rails with cable ties or Velcro fasteners.</p> <p>The cable clamp rails can be located horizontally at the rear directly onto a 19" mounting level or in the enclosure depth between two mounting levels. An additional screw fastening secures the unit.</p> <p>The depth variability of the rails allows their length to be flexibly adapted to the given mounting distance between the two 19" mounting levels.</p>
Material	Carbon steel
Surface finish	Zinc-plated
Supply includes	Mounting accessories
Distance between levels	325 - 575 mm 12.8 - 22.6 "
Note	Mounting dimensions + 152 mm = 19" distance between levels
Packaging unit	4 pc(s).
Net weight	1

# Features

Gross weight	1.104
Customs tariff number	73269098
EAN	4028177436107
ETIM 9	EC000322
ECLASS 8.0	27400604