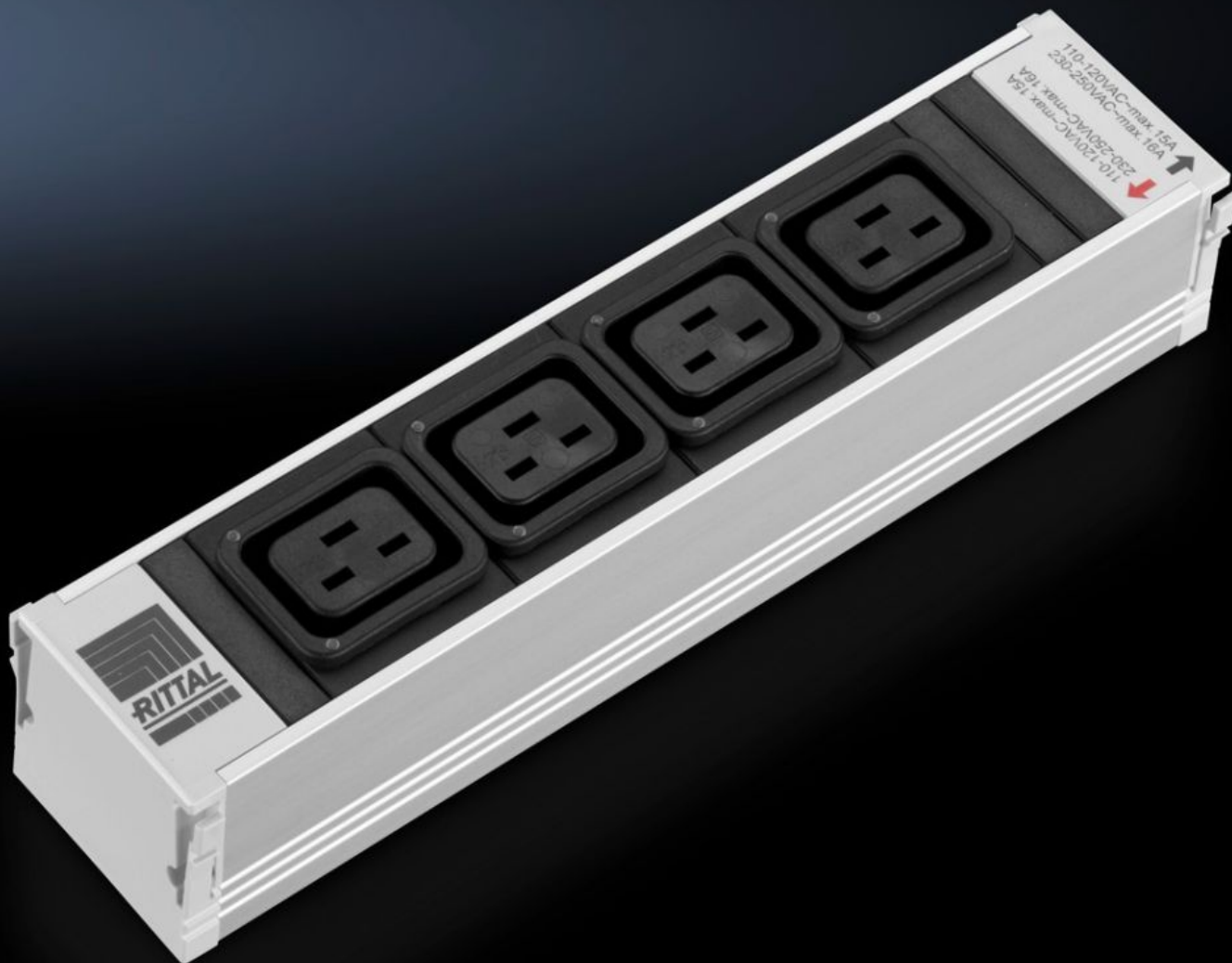


Rittal – The System.

Faster – better – everywhere.



DK 7859.130 PSM Outlet Modules

State: 5/15/2024 (Source: [rittal.com/us-en](https://www.rittal.com/us-en))

ENCLOSURES

POWER DISTRIBUTION

CLIMATE CONTROL

IT INFRASTRUCTURE

SOFTWARE & SERVICES

FRIEDHELM LOH GROUP



DK 7859.130 - PSM Outlet Modules

The various modules and ground contacts can be inserted into the support rail in any combination.

Features

Model No.	DK 7859.130
Version	non-switchable, with LED power display
Product description	The modular system enables basic configuration of the racks using a vertical support rail with single/three-phase infeed. The different socket modules can be snapped into position in the support rail to supply the active components. The various modules, ground contacts and IEC320 can be inserted into the support rail in any combination. This is easily achieved, even by non-electricians, thanks to the shock hazard protected plug & play system.
Material	Profile: Aluminum, anodized Socket inserts: Plastic (PA6 GF 30 V1)
Length	250 mm 9.84 "
Type of connection (electrical)	WAGO WINSTA MIDI
Phases per infeed	1~
Thermal overcurrent protection	–
Rated operating voltage	110 V – 230 V AC, 50/60 Hz
Rated current (max.)	16 A
Required module slots (quantity)	1
Dimensions	Length: 250 mm Length: 9.84 "
Operating temperature range	5 °C...45 °C 41 °F...113 °F
Ambient humidity (non-condensing)	5...95 %
Outlets	4 x Non-Heating Apparatus Socket C19

Features

Packaging unit	1 pc(s).
Weight/packaging unit	0.385 kg 0.8 lb.
Customs tariff number	85369001
EAN	4028177598027
ETIM 7.0	EC000330
ECLASS 8.0	27142604

Approvals

Approvals	IEC CB VDE
Explanations	Declaration of conformity