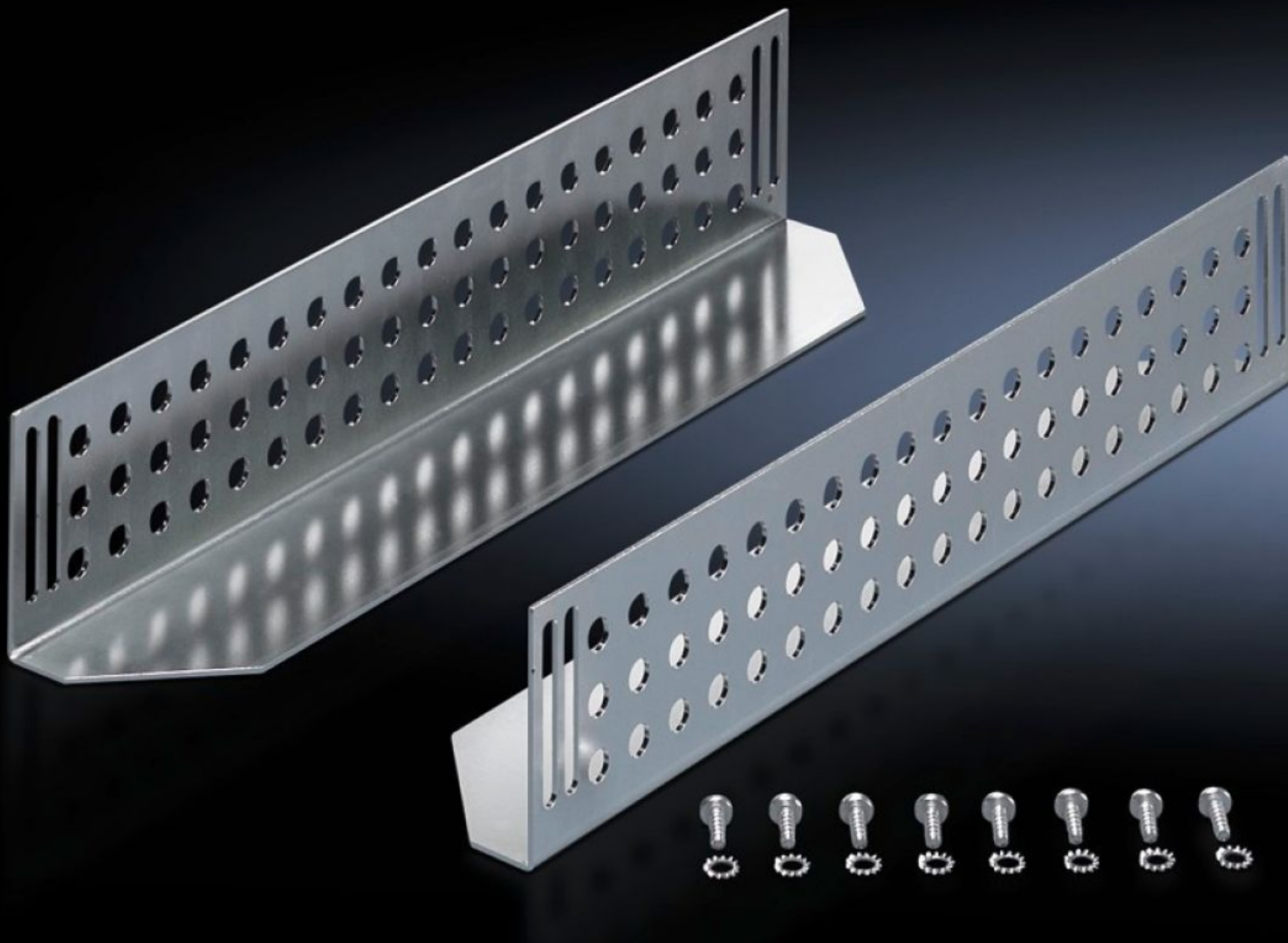


# Rittal – The System.

Faster – better – everywhere.



## DK 7963.310 Slide Rail

State: 7/9/2025 (Source: [rittal.com/us-en](https://www.rittal.com/us-en))

ENCLOSURES

POWER DISTRIBUTION

CLIMATE CONTROL

IT INFRASTRUCTURE

SOFTWARE & SERVICES

FRIEDHELM LOH GROUP



# DK 7963.310 - Slide Rail for TE

Mounted between front and rear mounting levels, to support heavy 19" components.

## Features

Model No.	DK 7963.310
Product description	Mounted between front and rear 19" mounting levels. Slide rails can be used to support heavy 19" components.
Material	Carbon steel
Surface finish	Zinc-plated
Supply includes	Assembly components
Distance between mounting levels	395 mm 15.6 "
Load capacity static	800 N 179.847 lbf.
Contact surface	Width: 85 mm Depth: 324 mm Width: 3.35 " Depth: 12.8 "
Suitable for	Enclosure type: TE 8000 EL
Installation dimensions	Installation depth for components: 482.6 mm Installation width for components: 19" Installation depth for components: 19 " Installation width for components: 19"
Packaging unit	2 pc(s).
Net weight	1.56
Gross weight	1.76
Customs tariff number	73269098
EAN	4028177443938
ETIM 9	EC002620

# Features

---

ECLASS 8.0

27189261