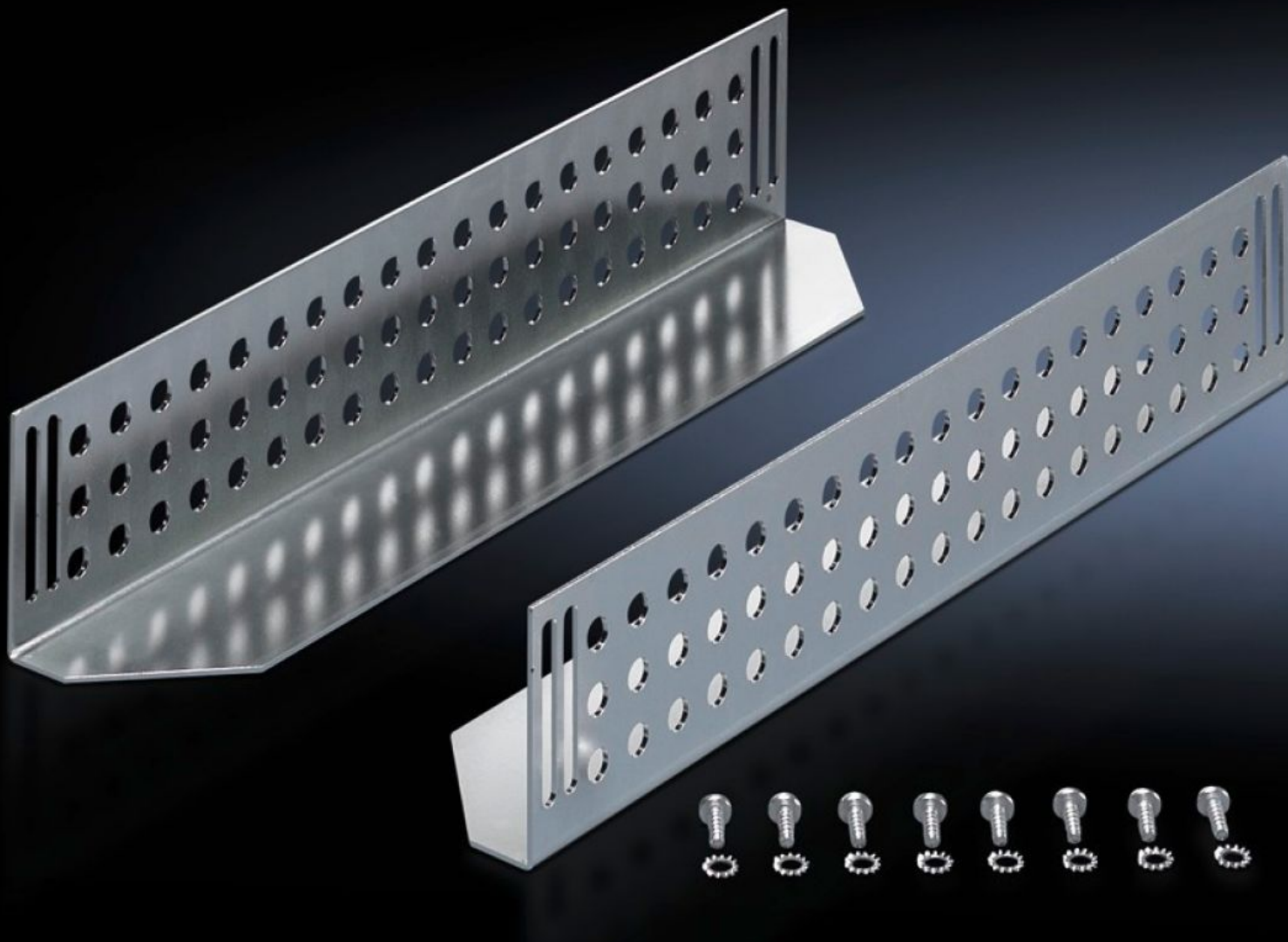


Rittal – The System.

Faster – better – everywhere.



DK 7963.710 Slide Rail

State: 8/2/2025 (Source: [rittal.com/us-en](https://www.rittal.com/us-en))

ENCLOSURES

POWER DISTRIBUTION

CLIMATE CONTROL

IT INFRASTRUCTURE

SOFTWARE & SERVICES

FRIEDHELM LOH GROUP



DK 7963.710 - Slide Rail for TE

Mounted between front and rear mounting levels, to support heavy 19" components.

Features

Model No.	DK 7963.710
Product description	Mounted between front and rear 19" mounting levels. Slide rails can be used to support heavy 19" components.
Material	Carbon steel
Surface finish	Zinc-plated
Supply includes	Assembly components
Distance between mounting levels	795 mm 31.3 "
Load capacity static	800 N 179.847 lbf.
Contact surface	Width: 85 mm Depth: 724 mm Width: 3.35 " Depth: 28.5 "
Suitable for	Enclosure type: TE 8000
Installation dimensions	Installation depth for components: 482.6 mm Installation width for components: 19" Installation depth for components: 19 " Installation width for components: 19"
Packaging unit	2 pc(s).
Net weight	3.512
Gross weight	3.711
Customs tariff number	73269098
EAN	4028177443976
ETIM 9	EC002620
ECLASS 8.0	27189261