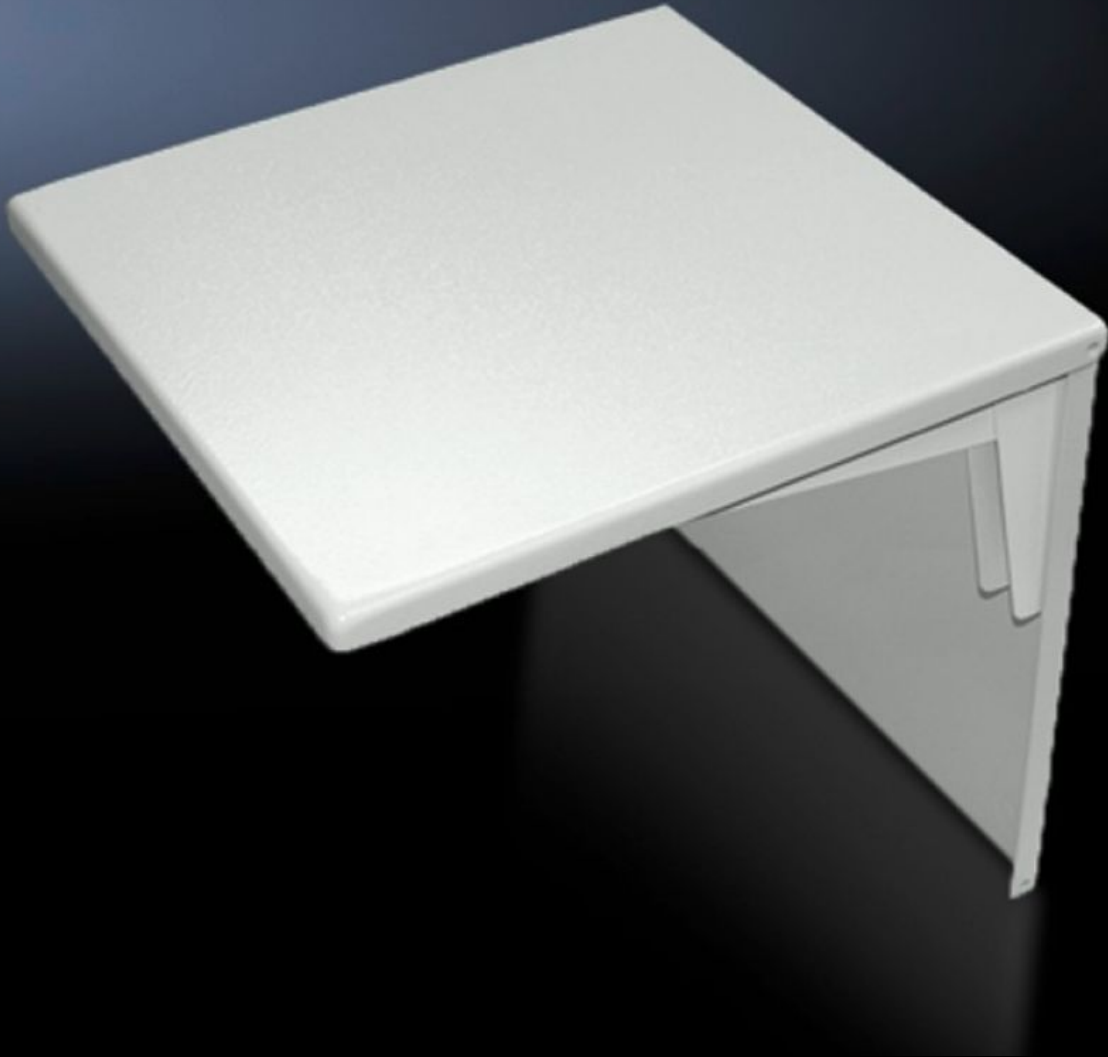


Rittal – The System.

Faster – better – everywhere.



TS 8018.859

Component shelves, collapsible

State: 4/2/2026 (Source: rittal.com/us-en)

ENCLOSURES

POWER DISTRIBUTION

CLIMATE CONTROL

IT INFRASTRUCTURE

SOFTWARE & SERVICES

FRIEDHELM LOH GROUP



TS 8018.859 - Component shelves, collapsible Carbon steel

Features

Model No.	TS 8018.859
Material	Carbon steel, 2 mm
Surface finish	Dipcoat-primed and powder-coated, textured paint
Color	RAL 7035
Supply includes	Fasteners
Packaging unit	1 pc(s).
Net weight	8.399 lb
Gross weight	8.399 lb
Customs tariff number	7326909099