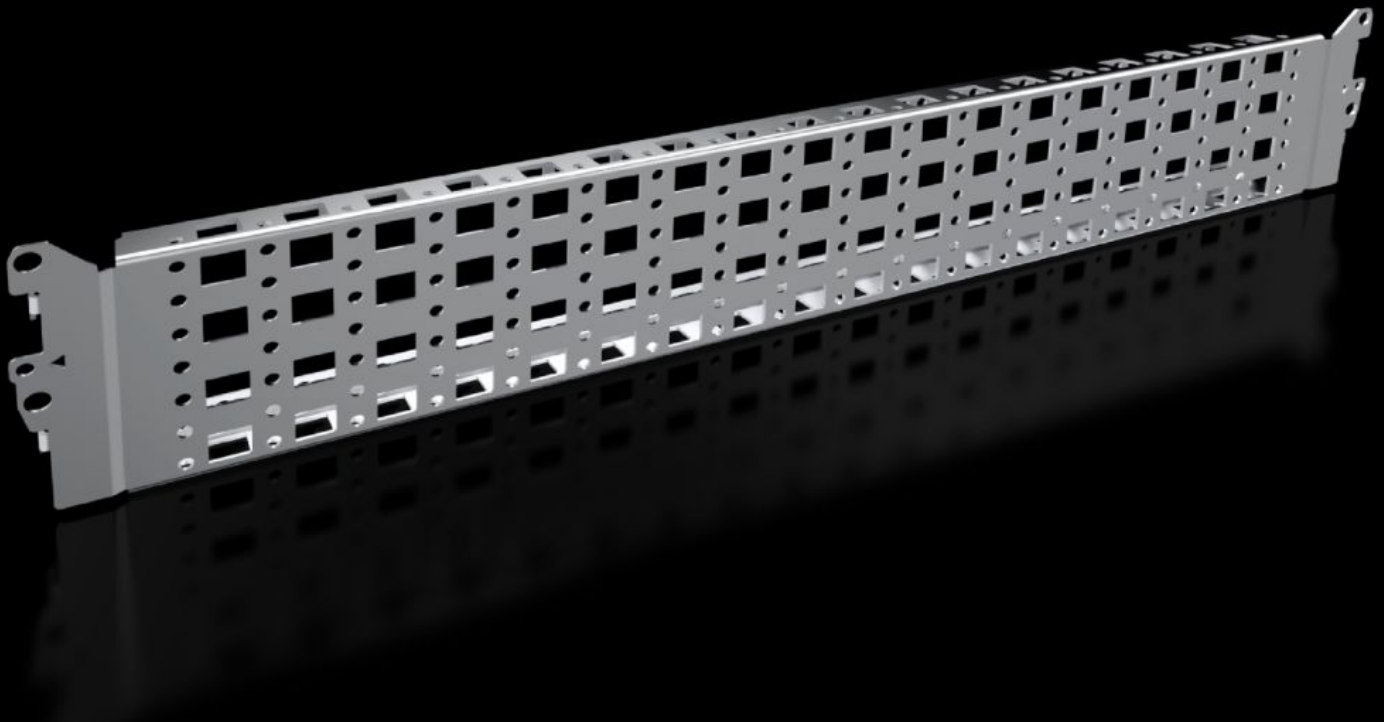


Rittal – The System.

Faster – better – everywhere.



VX 8100.732

23 x 89 mm system chassis, stainless steel

State: 4/18/2026 (Source: rittal.com/us-en)

ENCLOSURES

POWER DISTRIBUTION

CLIMATE CONTROL

IT INFRASTRUCTURE

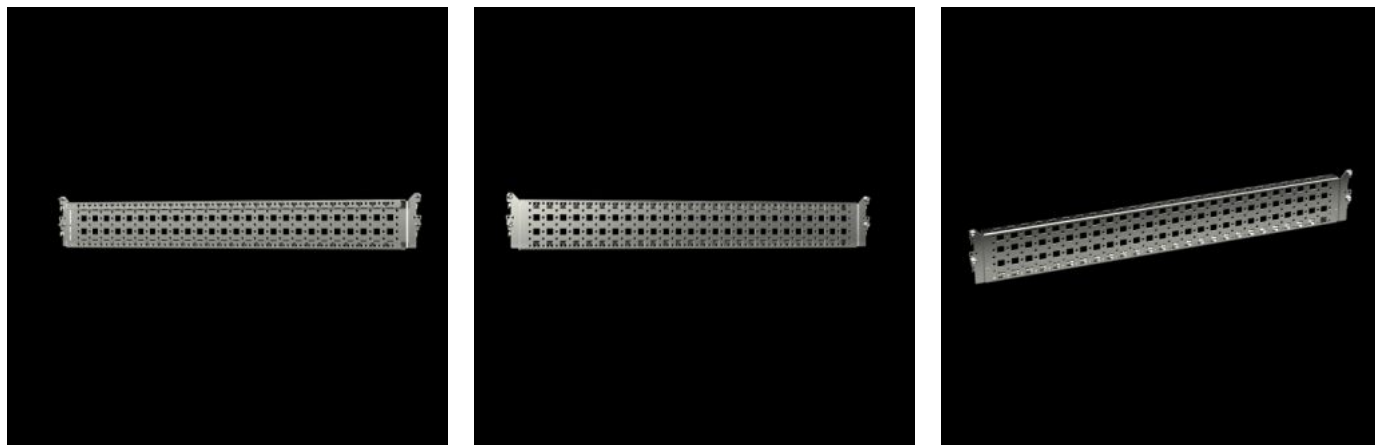
SOFTWARE & SERVICES

FRIEDHELM LOH GROUP



VX 8100.732 - 23 x 89 mm system chassis, stainless steel for VX, VX SE

For variable and individual interior installation of the enclosure frame on the inner mounting level.



Features

Model No.	VX 8100.732
Product description	For variable and individual interior installation of the enclosure frame on the inner mounting level.
Benefits	Simply place in the system punchings and screw-fasten System punchings on all four sides With slots at the top and bottom for cage nuts, for attaching your own components via metric screws
Material	Stainless steel 1.4301 (AISI 304)
Supply includes	Assembly components
Installation options	In VX on the inner mounting level on the enclosure section VX In VX SE on enclosure section in conjunction with adapter rail VX On identical system chassis, one below the other
Suitable for	Enclosure type: VX VX SE Width/depth: 600 mm Enclosure type: VX VX SE Width/depth: 23.6 "

Features

Packaging unit	2 pc(s).
Net weight	1.3 kg
Gross weight	1.56 kg
Customs tariff number	73269098
ETIM 9	EC002620
ECLASS 8.0	27189234
Product description	VX Punched section, with mounting flange 23 x 89 mm, for W/D: 600 mm, stainless steel

Approvals

Explanations	PCF-declaration
--------------	-----------------