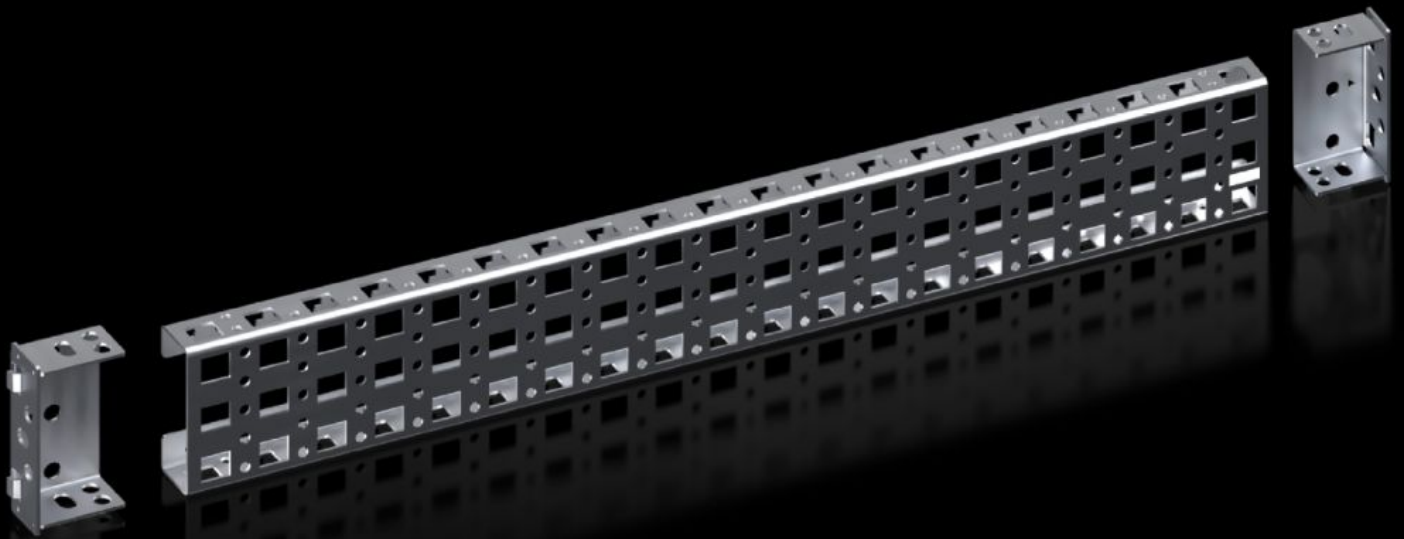


Rittal – The System.

Faster – better – everywhere.



VX 8100.742

Mounting chassis 23 x 64 mm

State: 4/2/2026 (Source: rittal.com/us-en)

ENCLOSURES

POWER DISTRIBUTION

CLIMATE CONTROL

IT INFRASTRUCTURE

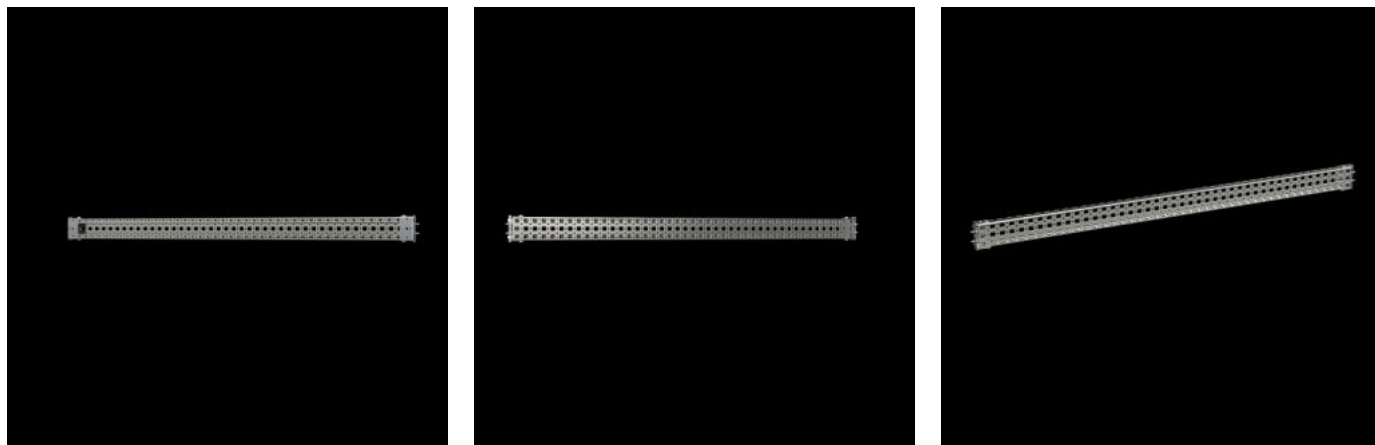
SOFTWARE & SERVICES

FRIEDHELM LOH GROUP



VX 8100.742 - Mounting chassis 23 x 64 mm for VX, VX SE

For variable and individual interior installation of the enclosure frame on the inner mounting level.



Features

Model No.	VX 8100.742
Product description	For variable and individual interior installation of the enclosure frame on the inner mounting level. Mounting flush with enclosure frame. Due to additional mounting brackets, it can also be used with the pre-installed mounting plate and can also be cut to any required length.
Benefits	System punchings on all four sides With slots at the top and bottom for cage nuts, for attaching your own components via metric screws
Material	Carbon steel
Surface finish	Zinc-plated
Supply includes	2 punched sections 4 mounting brackets Assembly components
Installation options	In VX on the inner mounting level on the enclosure section VX In VX SE on the vertical enclosure section in conjunction with adapter rail VX Between two chassis on inner mounting level

Features

Suitable for	Enclosure type: VX VX SE Width/depth: 600 mm Enclosure type: VX VX SE Width/depth: 23.6 ~
Packaging unit	2 pc(s).
Net weight	0.998 kg
Gross weight	1.44 kg
Customs tariff number	73269098
ETIM 9	EC002620
ECLASS 8.0	27189234
Product description	VX Punched section, without mounting flange 23 x 64mm, for WD: 600 mm

Approvals

Explanations	PCF-declaration
--------------	-----------------