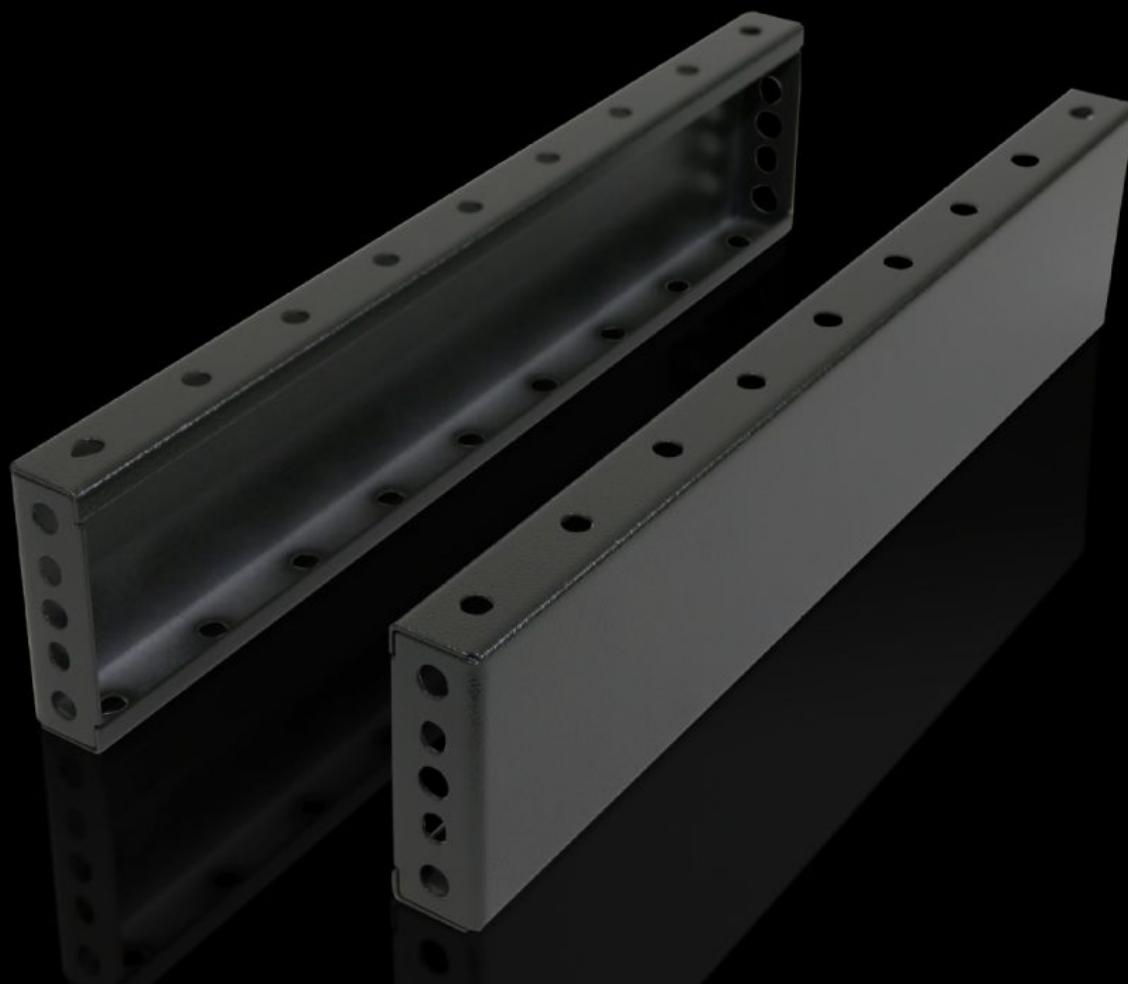
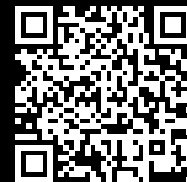


Rittal – The System.

Faster – better – everywhere.



TS 8601.060

Base/plinth trim panels, side, 100 mm

State: 2/2/2026 (Source: [rittal.com/us-en](https://www.rittal.com/us-en))

ENCLOSURES

POWER DISTRIBUTION

CLIMATE CONTROL

IT INFRASTRUCTURE

SOFTWARE & SERVICES

FRIEDHELM LOH GROUP



TS 8601.060 - Base/plinth trim panels, side, 100 mm for base/plinth components, front and rear

To mount between the base/plinth components. For height 200 mm two 100 mm base/plinth trim panels can be used. Base/Plinth panels can be installed turned at 90° to provide stabilization for bayed base/plinth components.

Features

Model No.	TS 8601.060
Product description	To mount between the base/plinth components. For height 200 mm, two 100 mm base/plinth trim panels can be used.
Material	Carbon steel
Surface finish	Spray-finished
Color	RAL 7022
Supply includes	2 plinth/base trim panels Assembly components
Mounting tip	100 mm side trim panels can be installed rotated through 90° to provide stabilization for bayed base/plinth components. Base/plinth baying brackets are required here
Dimensions	Height: 100 mm Height: 3.94 "

Features

Suitable for	Enclosure type: TS: = 600 mm
	Enclosure type: SE
	Enclosure type: CM
	Enclosure type: TP
	Enclosure type: PC
	Enclosure type: IW
	Enclosure type: TS IT
	Enclosure type: TS: = 23.6 "
	Enclosure type: SE
	Enclosure type: CM
	Enclosure type: TP
	Enclosure type: PC
	Enclosure type: IW
	Enclosure type: TS IT

Packaging unit	2 pc(s).
----------------	----------

Net weight	1.798
------------	-------

Gross weight	1.997
--------------	-------

Customs tariff number	94039910
-----------------------	----------

EAN	4028177208650
-----	---------------

ECLASS 8.0	27182003
------------	----------