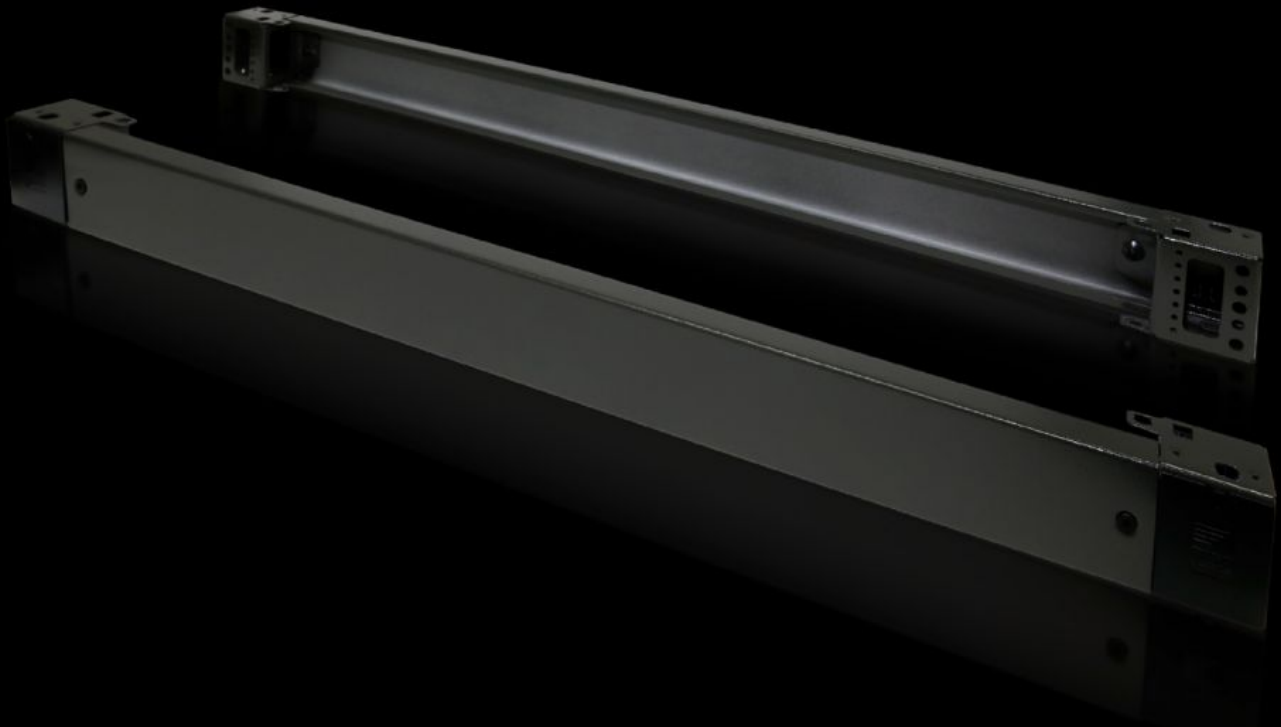


Rittal – The System.

Faster – better – everywhere.



TS 8601.200

Base/plinth components, front and rear, 100 mm

State: 5/22/2026 (Source: rittal.com/us-en)

ENCLOSURES

POWER DISTRIBUTION

CLIMATE CONTROL

IT INFRASTRUCTURE

SOFTWARE & SERVICES

FRIEDHELM LOH GROUP



TS 8601.200 - Base/plinth components, front and rear, 100 mm Carbon steel, for TS, TS IT, SE, CM, TP, PC, IW, TE

Base/Plinth component consisting of one trim panel and two pre-assembled corner pieces.

Features

Model No.	TS 8601.200
Version	Solid
Product description	Base/Plinth component consisting of one trim panel and two pre-assembled corner pieces.
Material	Base/plinth components: Carbon steel Cover caps: Plastic
Surface finish	Spray-finished
Color	RAL 7022 Cover caps: RAL 9005
Supply includes	2 base/plinth components 4 cover caps Assembly components
Dimensions	Height: 100 mm Height: 3.94 "
Suitable for	Enclosure type: TS: = 1,200 mm Enclosure type: SE Enclosure type: CM Enclosure type: TP Enclosure type: PC Enclosure type: IW Enclosure type: TS IT Enclosure type: TS: = 47.2 " Enclosure type: SE Enclosure type: CM Enclosure type: TP Enclosure type: PC Enclosure type: IW Enclosure type: TS IT

Features

Packaging unit	2 pc(s).
Net weight	5.76 kg
Gross weight	6.08 kg
Customs tariff number	94039910
ECLASS 8.0	27182003
Product description	TS Base/plinth component, rear, H: 100 mm, for W: 1200 mm, RAL 7022, sheet steel