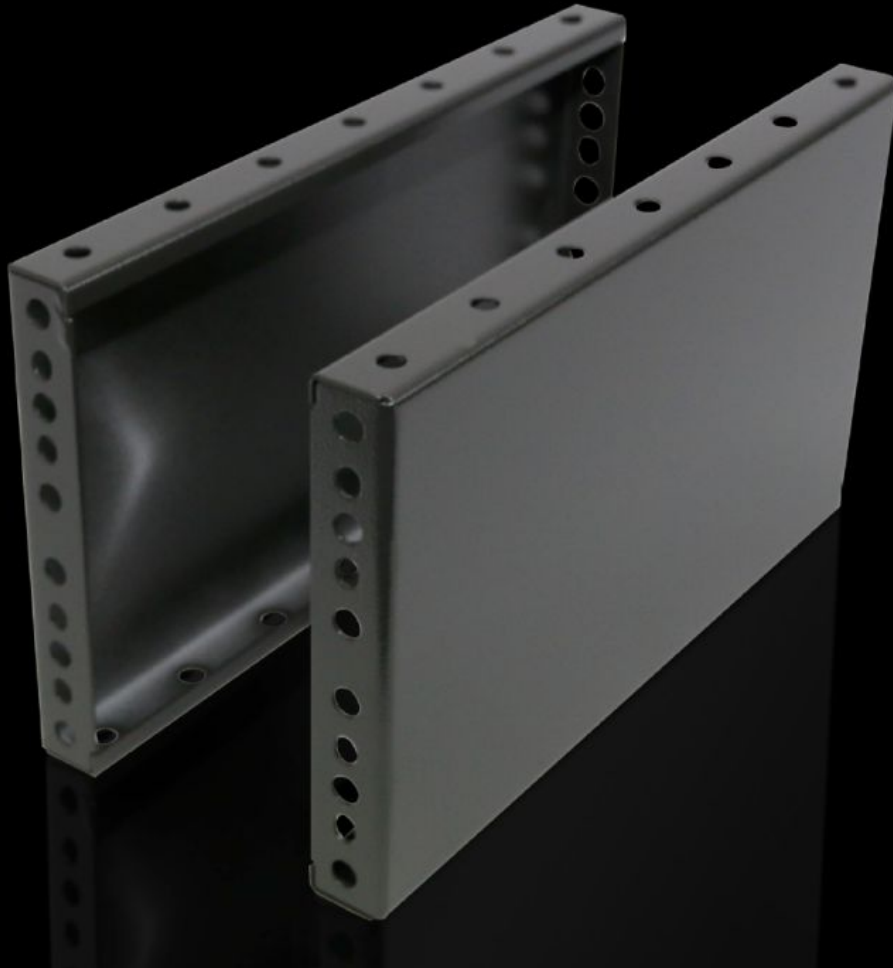


Rittal – The System.

Faster – better – everywhere.



TS 8602.050

Base/plinth trim panels, side, 200 mm

State: 4/23/2026 (Source: rittal.com/us-en)

ENCLOSURES

POWER DISTRIBUTION

CLIMATE CONTROL

IT INFRASTRUCTURE

SOFTWARE & SERVICES

FRIEDHELM LOH GROUP



TS 8602.050 - Base/plinth trim panels, side, 200 mm for base/plinth components, front and rear

To mount between the base/plinth components. For height 200 mm two 100 mm base/plinth trim panels can be used.

Features

Model No.	TS 8602.050
Product description	To mount between the base/plinth components. For height 200 mm, two 100 mm base/plinth trim panels can be used.
Material	Carbon steel
Surface finish	Spray-finished
Color	RAL 7022
Supply includes	2 plinth/base trim panels Assembly components
Mounting tip	100 mm side trim panels can be installed rotated through 90° to provide stabilization for bayed base/plinth components. Base/plinth baying brackets are required here
Dimensions	Height: 200 mm Height: 7.87 "
Suitable for	Enclosure type: TS: = 500 mm Enclosure type: SE Enclosure type: CM Enclosure type: TP Enclosure type: PC Enclosure type: IW Enclosure type: TS IT Enclosure type: TS: = 19.7 " Enclosure type: SE Enclosure type: CM Enclosure type: TP Enclosure type: PC Enclosure type: IW Enclosure type: TS IT

Features

Packaging unit	2 pc(s).
Net weight	2.7 kg
Gross weight	2.716 kg
Customs tariff number	94039910
ECLASS 8.0	27182003
Product description	TS Trim panel, sides, H: 200 mm, for W: 500 mm, RAL 7022, sheet steel