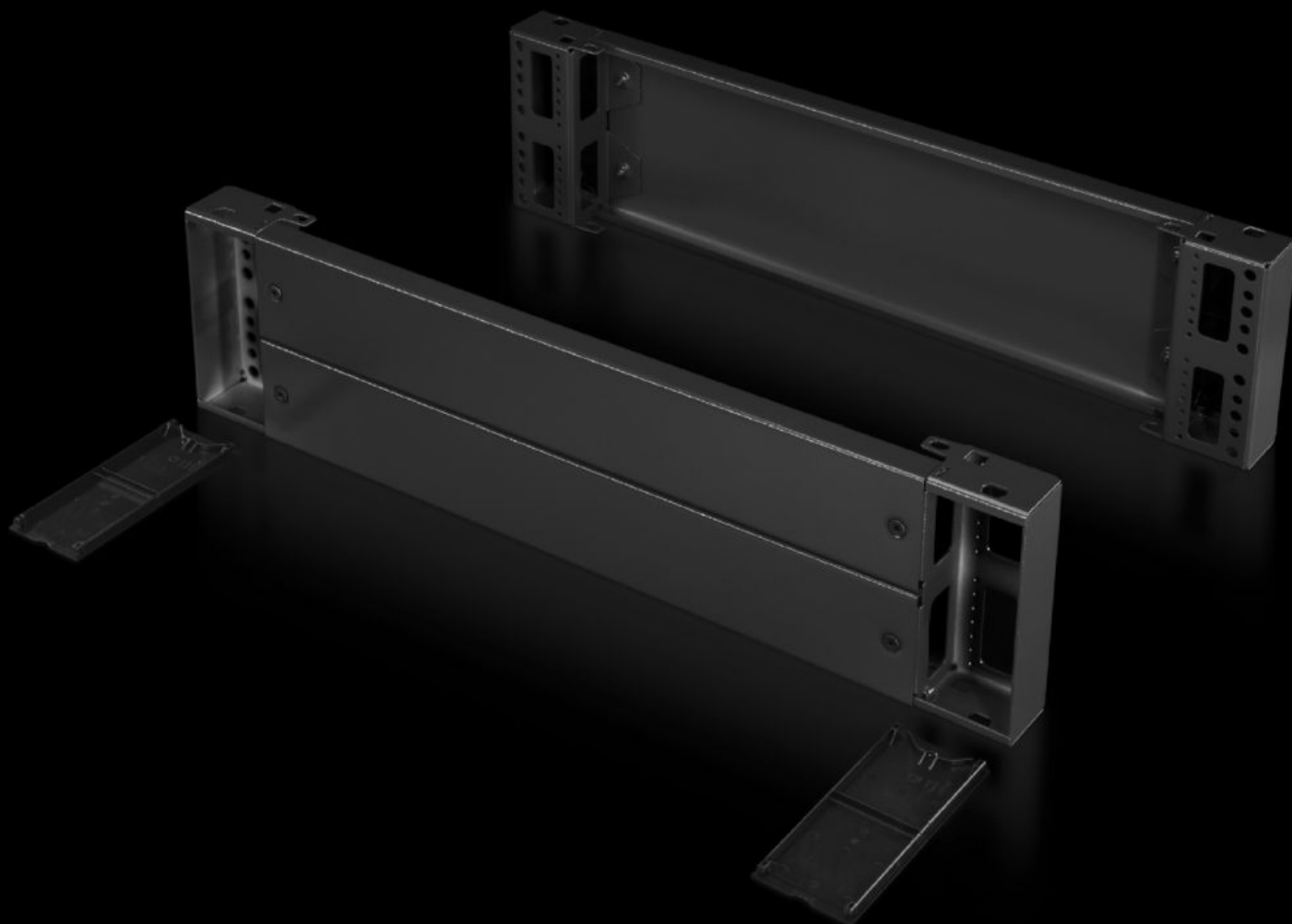


# Rittal – The System.

Faster – better – everywhere.



## TS 8602.600

## Base/plinth components, front and rear, 200 mm

State: 12/24/2025 (Source: [rittal.com/us-en](http://rittal.com/us-en))

ENCLOSURES

POWER DISTRIBUTION

CLIMATE CONTROL

IT INFRASTRUCTURE

SOFTWARE & SERVICES

FRIEDHELM LOH GROUP



# TS 8602.600 - Base/plinth components, front and rear, 200 mm Carbon steel, for TS, TS IT, SE, CM, TP, PC, IW, TE

Base/Plinth component consisting of one trim panel and two pre-assembled corner pieces. On 200 mm high base/plinth components, one trim panel is in two parts to allow for cable entry.

## Features

Model No.	TS 8602.600
Version	Solid
Product description	Base/Plinth component consisting of one trim panel and two pre-assembled corner pieces. On 200 mm high base/plinth components, one trim panel is in two parts to allow for cable entry.
Material	Base/plinth components: Carbon steel Cover caps: Plastic
Surface finish	Spray-finished
Color	RAL 7022 Cover caps: RAL 9005
Supply includes	2 base/plinth components 4 cover caps Assembly components
Dimensions	Height: 200 mm Height: 7.87 "

# Features

Suitable for	Enclosure type: TS: = 600 mm
	Enclosure type: SE
	Enclosure type: CM
	Enclosure type: TP
	Enclosure type: PC
	Enclosure type: IW
	Enclosure type: TS IT
	Enclosure type: TS: = 23.6 "
	Enclosure type: SE
	Enclosure type: CM
	Enclosure type: TP
	Enclosure type: PC
	Enclosure type: IW
	Enclosure type: TS IT

Packaging unit	2 pc(s).
----------------	----------

Net weight	6.32
------------	------

Gross weight	6.963
--------------	-------

Customs tariff number	94039910
-----------------------	----------

EAN	4028177208612
-----	---------------

ECLASS 8.0	27182003
------------	----------