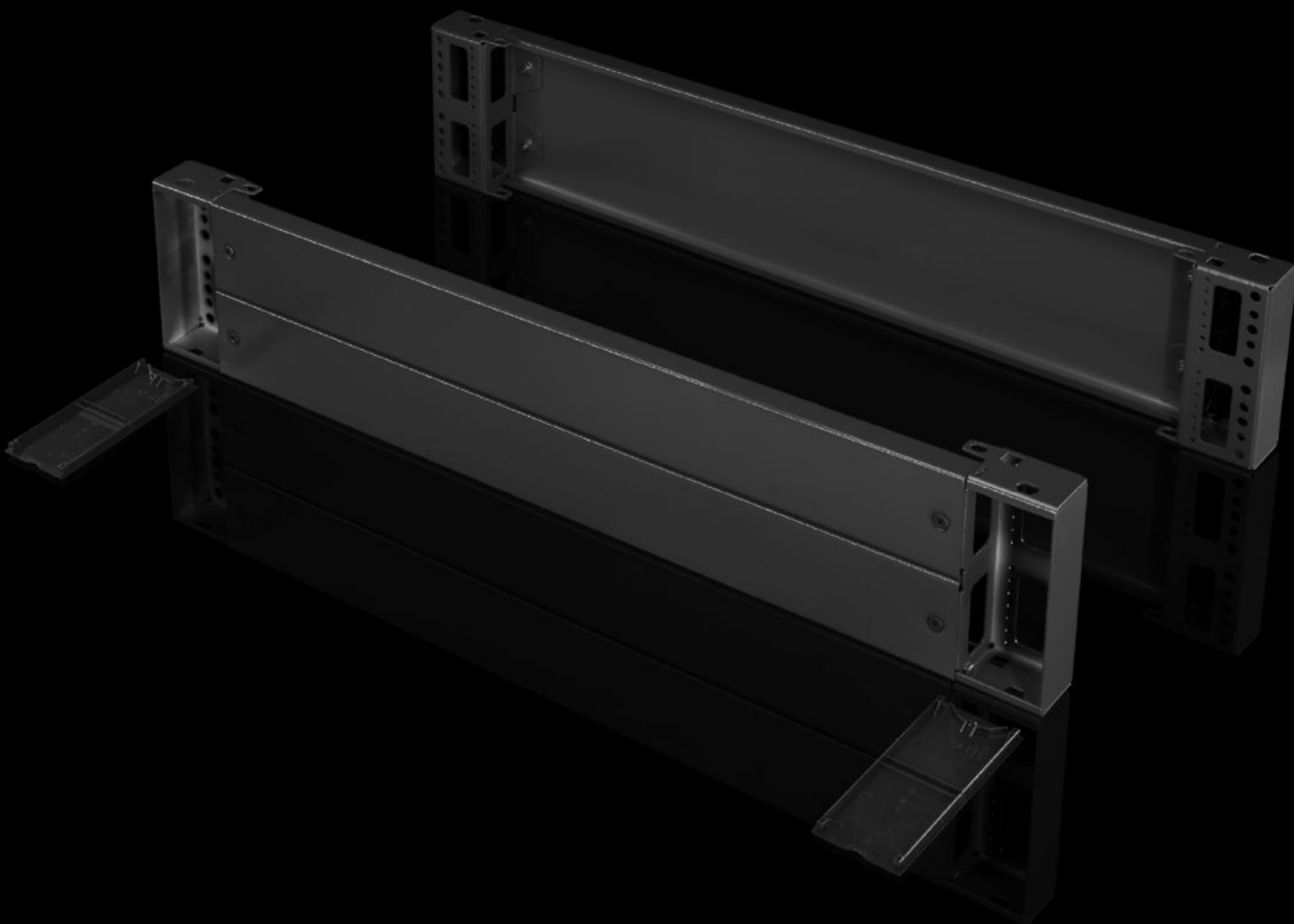


Rittal – The System.

Faster – better – everywhere.



TS 8602.800

Base/plinth components, front and rear, 200 mm

State: 6/17/2025 (Source: [rittal.com/us-en](https://www.rittal.com/us-en))

ENCLOSURES

POWER DISTRIBUTION

CLIMATE CONTROL

IT INFRASTRUCTURE

SOFTWARE & SERVICES

FRIEDHELM LOH GROUP



TS 8602.800 - Base/plinth components, front and rear, 200 mm Carbon steel, for TS, TS IT, SE, CM, TP, PC, IW, TE

Base/Plinth component consisting of one trim panel and two pre-assembled corner pieces. On 200 mm high base/plinth components, one trim panel is in two parts to allow for cable entry.

Features

Model No.	TS 8602.800
Version	Solid
Product description	Base/Plinth component consisting of one trim panel and two pre-assembled corner pieces. On 200 mm high base/plinth components, one trim panel is in two parts to allow for cable entry.
Material	Base/plinth components: Carbon steel Cover caps: Plastic
Surface finish	Spray-finished
Color	RAL 7022 Cover caps: RAL 9005
Supply includes	2 base/plinth components 4 cover caps Assembly components
Dimensions	Height: 200 mm Height: 7.87 "

Features

Suitable for	Enclosure type: TS: = 800 mm Enclosure type: SE Enclosure type: CM Enclosure type: TP Enclosure type: PC Enclosure type: IW Enclosure type: TS IT Enclosure type: TS: = 31.5 ~ Enclosure type: SE Enclosure type: CM Enclosure type: TP Enclosure type: PC Enclosure type: IW Enclosure type: TS IT
Packaging unit	2 pc(s).
Net weight	7.52
Gross weight	8.366
Customs tariff number	94039910
EAN	4028177208629
ECLASS 8.0	27182003