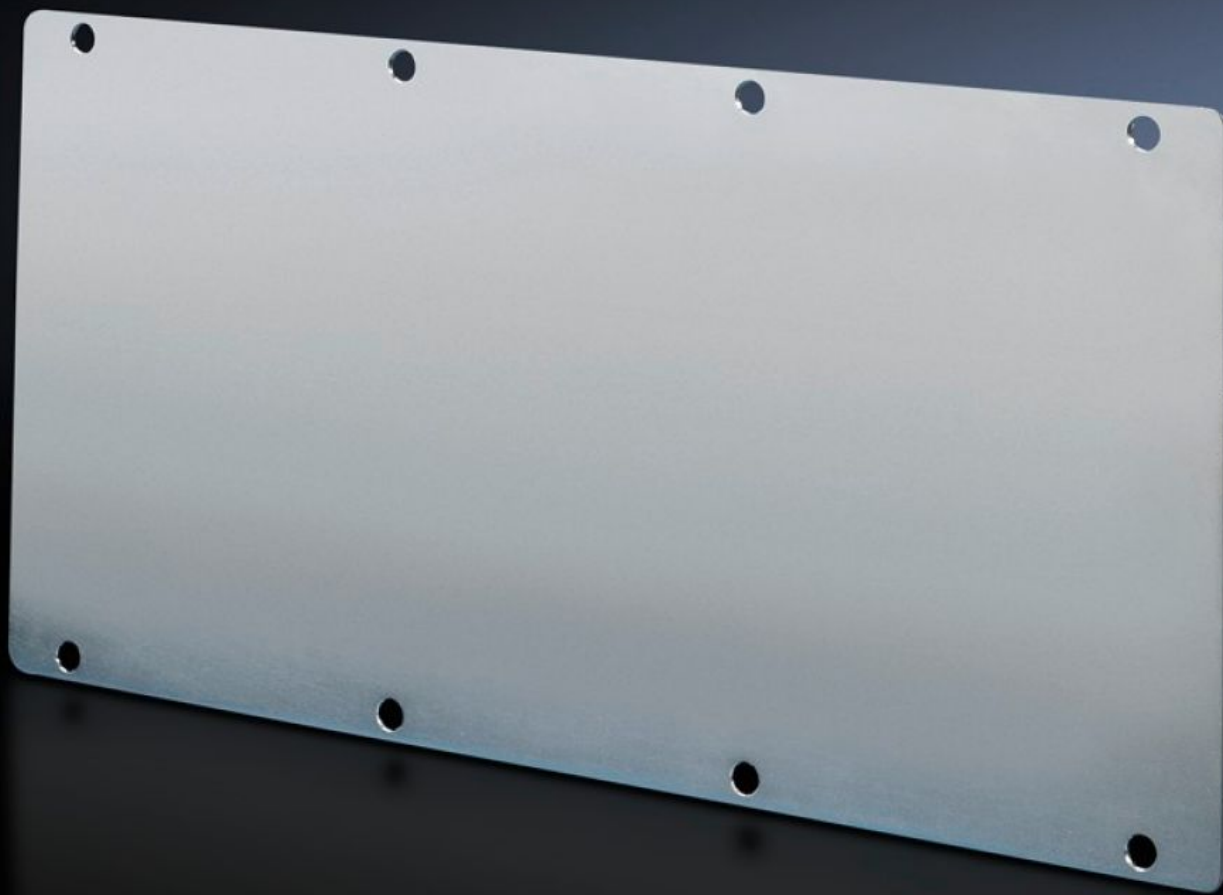


Rittal – The System.

Faster – better – everywhere.



TS 8609.160 Module Plates

State: 12/22/2025 (Source: rittal.com/us-en)

ENCLOSURES

POWER DISTRIBUTION

CLIMATE CONTROL

IT INFRASTRUCTURE

SOFTWARE & SERVICES

FRIEDHELM LOH GROUP



TS 8609.160 - Module Plates Solid

For sealing unused cut-outs. Can be easily machined for individual cut-outs.

Features

Model No.	TS 8609.160
Version	Solid
Product description	For blanking unused cut-outs. Easily machined for individual cut-outs.
Material	Carbon steel, 2.0 mm
Surface finish	Zinc-plated
Supply includes	Seal
Suitable for	Enclosure type: VX TS
Packaging unit	1 pc(s).
Net weight	0.88
Gross weight	0.936
PCF/VE (cradle-to-gate)	3.7 kg CO2 eq (Cat B)
Information regarding the PCF class	Category B: PCF value (cradle-to-gate) calculated approximately on the basis of the product weight and self-declared
Customs tariff number	83024200
EAN	4028177211780
ETIM 9	EC000211
ECLASS 8.0	27142421