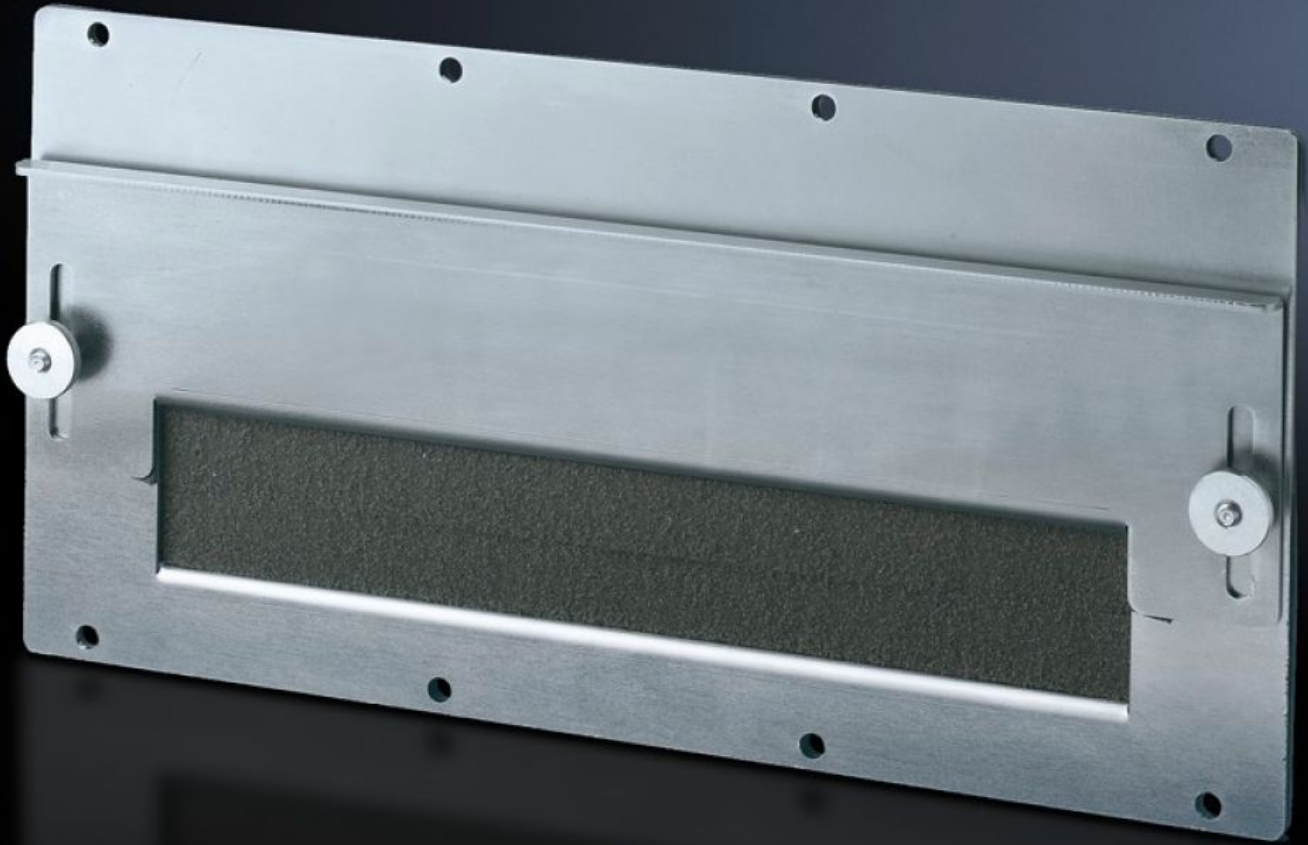


Rittal – The System.

Faster – better – everywhere.



SZ 8609.170 Module Plates

State: 4/13/2026 (Source: rittal.com/us-en)

ENCLOSURES

POWER DISTRIBUTION

CLIMATE CONTROL

IT INFRASTRUCTURE

SOFTWARE & SERVICES

FRIEDHELM LOH GROUP



SZ 8609.170 - Module Plates For cable entry

To route pre-assembled cables. Sealed, secure routing is achieved via adjustable angle brackets with inserted foam cable clamp strip. Fixed bracket, punched, for cable clamping.

Features

Model No.	SZ 8609.170
Version	For cable entry
Product description	To route pre-assembled cables. Sealed, secure routing is achieved via adjustable angle brackets with an inserted foam rubber clamping profile. Fixed bracket, punched, for cable clamping.
Material	Carbon steel, 2 mm
Surface finish	Zinc-plated
Supply includes	Seal and assembly components
Packaging unit	1 pc(s).
Net weight	0.9 kg
Gross weight	1.141 kg
PCF/VE (cradle-to-gate)	5.7 kg CO2 eq (Cat B)
Information regarding the PCF class	Category B: PCF value (cradle-to-gate) calculated approximately on the basis of the product weight and self-declared
Customs tariff number	83024200
ETIM 9	EC000211
ECLASS 8.0	27142421
Product description	TS Module panel, for cable entry