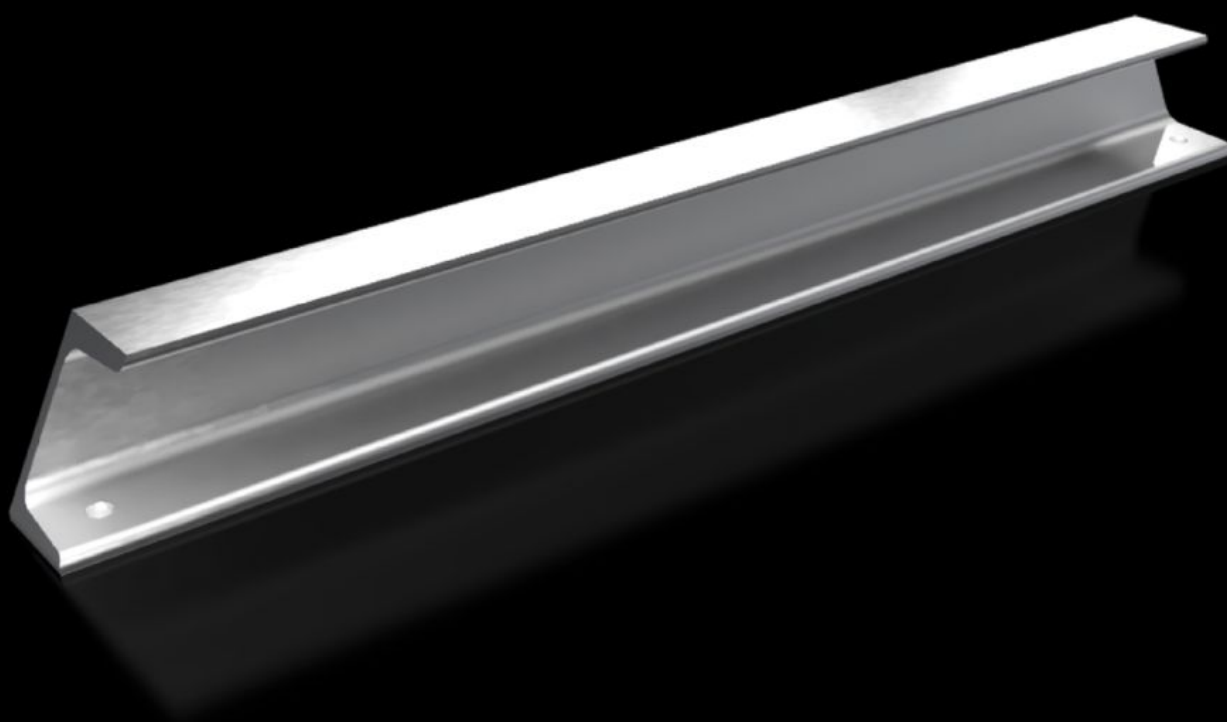


Rittal – The System.

Faster – better – everywhere.



TS 8612.960

Support Rail 65 x 42 mm

State: 6/28/2025 (Source: [rittal.com/us-en](https://www.rittal.com/us-en))

ENCLOSURES

POWER DISTRIBUTION

CLIMATE CONTROL

IT INFRASTRUCTURE

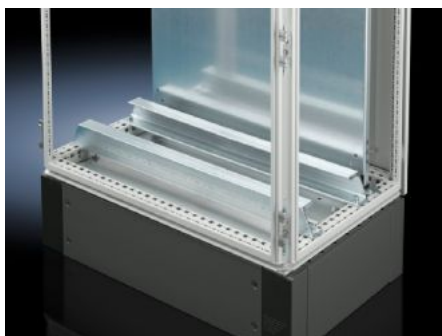
SOFTWARE & SERVICES

FRIEDHELM LOH GROUP



TS 8612.960 - Support Rail 65 x 42 mm for VX, TS, VX SE

For heavy equipment such as base isolators or transformers.



Features

Model No.	TS 8612.960
Product description	For heavy equipment such as base isolators or transformers.
Material	Steel
Surface finish	Zinc-plated
Supply includes	Assembly components
Installation options	On the inner mounting level, on VX enclosure profile In VX SE on the inner mounting level on the enclosure section in conjunction with adapter rail VX
Suitable for	Enclosure type: VX TS VX SE Width: = 600 mm Enclosure type: VX TS VX SE Width: = 23.6 ~
Packaging unit	2 pc(s).
Net weight	7.382
Gross weight	7.77
PCF per pack (cradle-to-gate)	29.6 kg CO2 eq (Cat B)

Features

Note on PCF category	Category B: PCF value (cradle-to-gate) based on the product weight, approximately calculated and self-declared
Customs tariff number	73269098
EAN	4028177522862
ETIM 9	EC001285
ECLASS 8.0	27189234