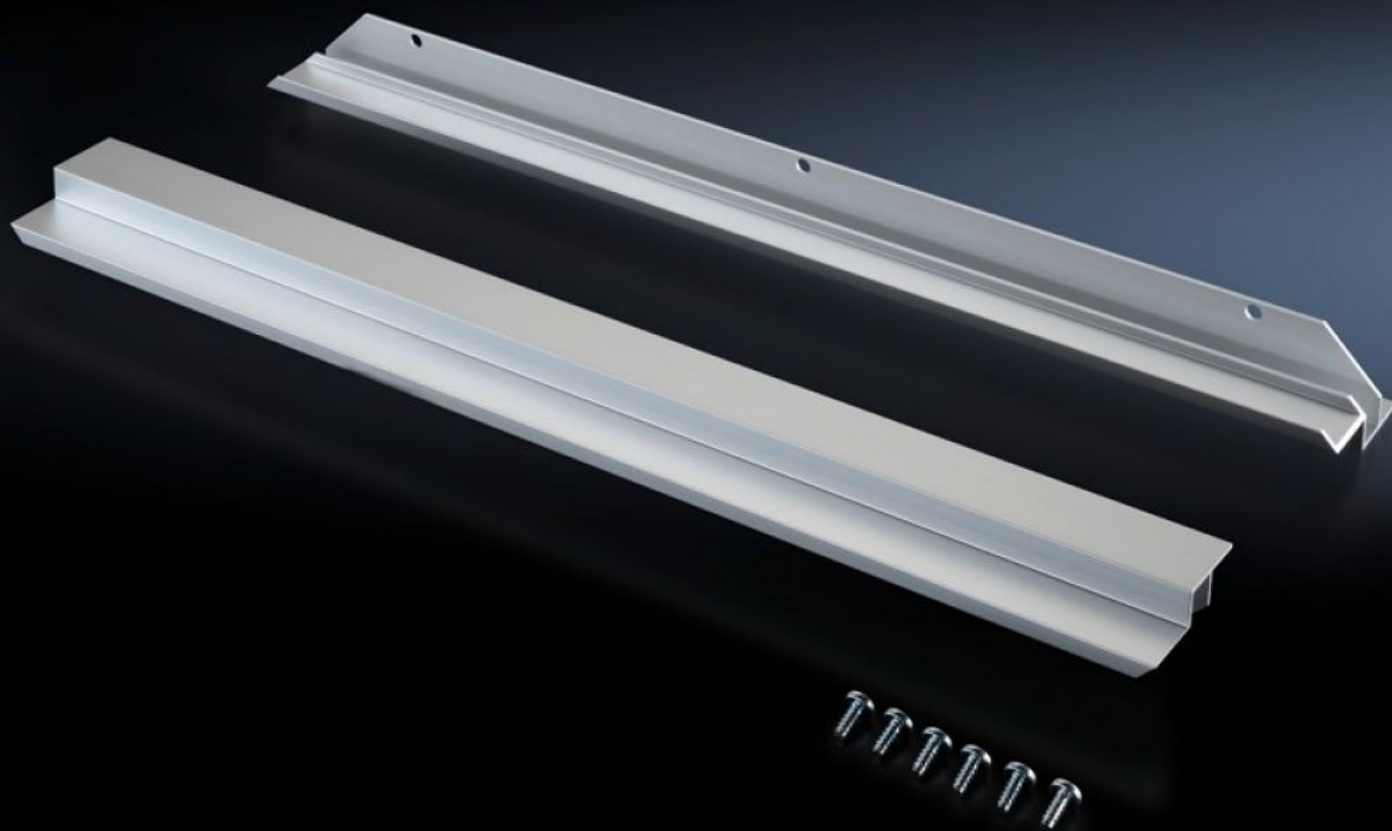
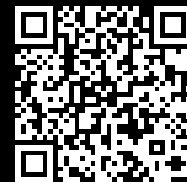


Rittal – The System.

Faster – better – everywhere.



TS 8613.040

Infill panels, 482.6 mm (19"), horizontal

State: 12/8/2025 (Source: rittal.com/us-en)

ENCLOSURES

POWER DISTRIBUTION

CLIMATE CONTROL

IT INFRASTRUCTURE

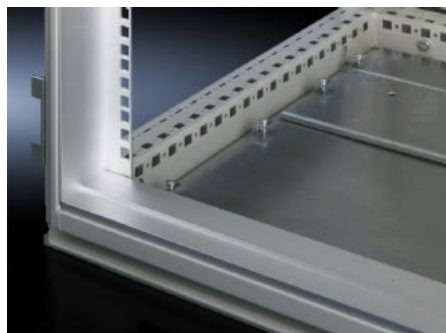
SOFTWARE & SERVICES

FRIEDHELM LOH GROUP



TS 8613.040 - Infill panels, 482.6 mm (19"), horizontal for adapter sections

To infill between installed 482.6 mm (19") equipment positioned in the full enclosure height and the enclosure clearance height.



Features

Model No.	TS 8613.040
Product description	Infill between installed 482.6 mm (19") equipment positioned in the full enclosure height and the enclosure clearance height.
Material	Extruded aluminum section
Supply includes	Assembly components
Suitable for	Enclosure type: TS Height: = 1,600 mm = 2,000 mm Enclosure type: TS Height: = 63 " = 78.7 "
Packaging unit	2 pc(s).
Net weight	0.6
Gross weight	0.719
Customs tariff number	83024200
EAN	4028177213159
ETIM 9	EC002625
ECLASS 8.0	27189234