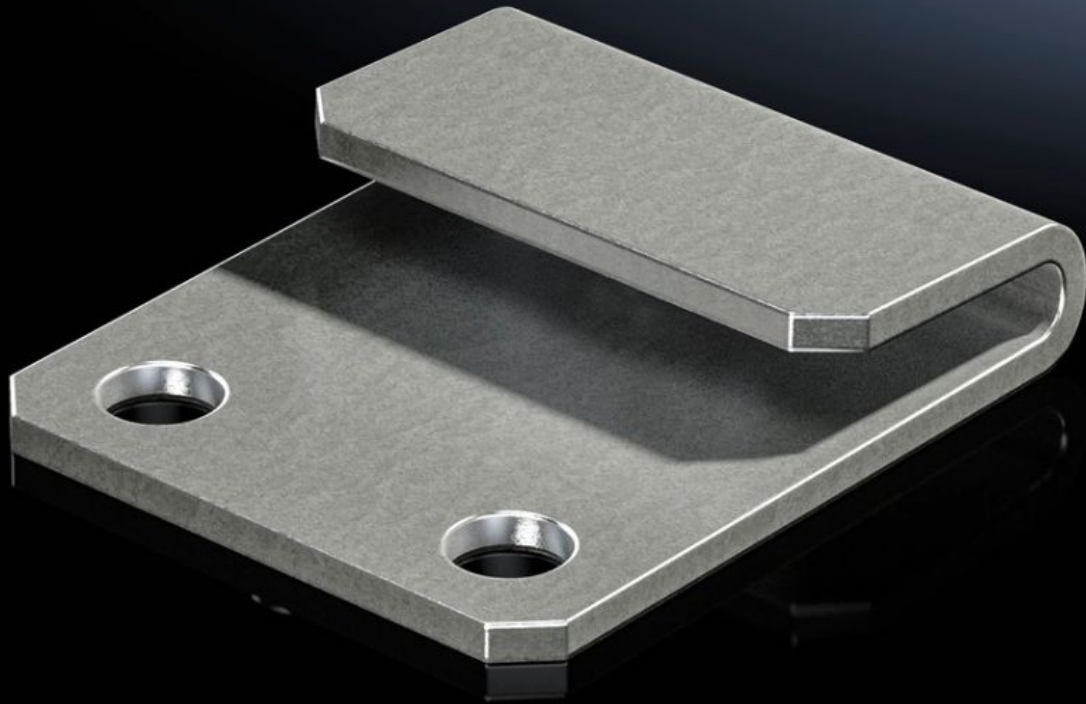


Rittal – The System.

Faster – better – everywhere.



VX 8617.352

Mounting plate attachment

State: 4/28/2026 (Source: rittal.com/us-en)

ENCLOSURES

POWER DISTRIBUTION

CLIMATE CONTROL

IT INFRASTRUCTURE

SOFTWARE & SERVICES

FRIEDHELM LOH GROUP



VX 8617.352 - Mounting plate attachment Type C, for VX

For additional clamping and to reduce potential vibration of the mounting plate.



Features

Model No.	VX 8617.352
Product description	For additional clamping and to reduce potential vibration of the mounting plate.
Benefits	Easy mounting directly on the enclosure frame
Function principle	The mounting plate can be inserted and then interlocked and clamped using the mounting plate fixture. Keeps the front of the mounting plate completely free for unrestricted use Can be mounted from the rear with built-in mounting plate and dismantled rear wall
Material	Carbon steel
Surface finish	Zinc plated, clear-chromated
Supply includes	Assembly components
Packaging unit	10 pc(s).
Net weight	0.5 kg
Gross weight	0.52 kg
PCF/VE (cradle-to-gate)	2.3 kg CO2 eq (Cat B)
Information regarding the PCF class	Category B: PCF value (cradle-to-gate) calculated approximately on the basis of the product weight and self-declared
Customs tariff number	73269098

Features

ETIM 9	EC002620
ECLASS 8.0	27189261
Product description	VX Mounting plate attachment, type C, sheet steel
