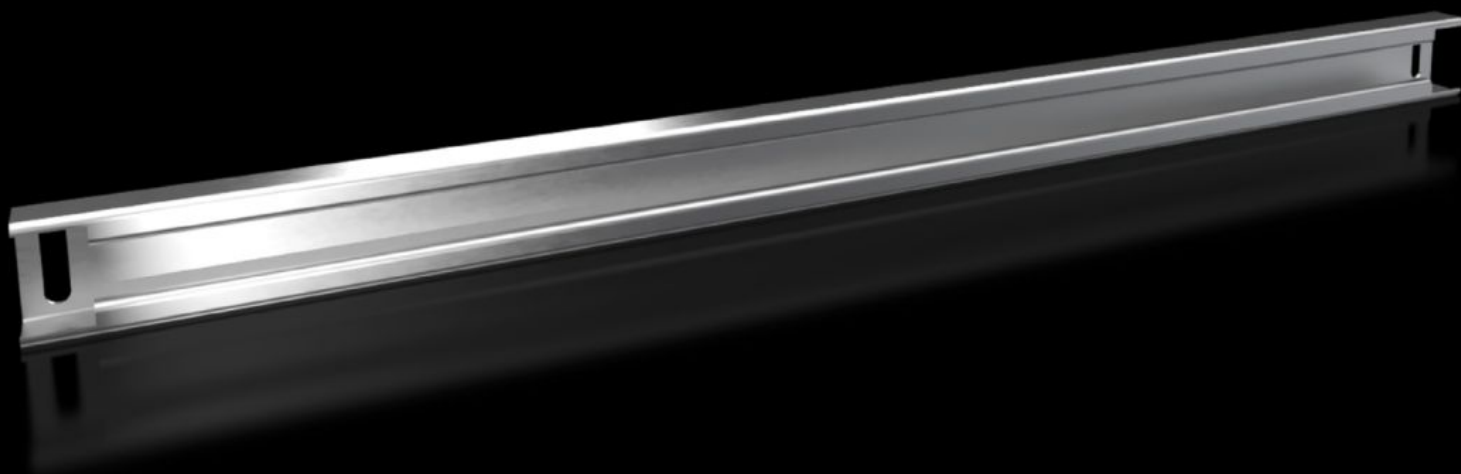


Rittal – The System.

Faster – better – everywhere.



VX 8617.810

Support Rail 48 x 26 mm

State: 8/5/2025 (Source: [rittal.com/us-en](https://www.rittal.com/us-en))

ENCLOSURES

POWER DISTRIBUTION

CLIMATE CONTROL

IT INFRASTRUCTURE

SOFTWARE & SERVICES

FRIEDHELM LOH GROUP



VX 8617.810 - Support Rail 48 x 26 mm for VX, VX SE, PC, IW, AX

For heavy installed equipment such as transformers. The T-head screw and longitudinal slots in the support rail accommodate all mounting dimensions.



Features

Model No.	VX 8617.810
Product description	
Material	Carbon steel
Surface finish	Zinc-plated
Supply includes	Assembly components
Installation options VX	In enclosure width 800 mm, on the inner mounting level and in the base
Installation options VX SE	In enclosure width 800 mm, on the inner mounting level, in conjunction with adaptor rail for VX compatibility and in the base
Installation options AX	In enclosure width 800 mm, in conjunction with rail for interior installation AX and base configuration rail for AX
Installation options PC	In enclosure width 800 mm, on the inner mounting level, in conjunction with adaptor rail for VX compatibility and in the base
Installation options IW	In enclosure width 800 mm, on the inner mounting level, in conjunction with adaptor rail for VX compatibility and in the base

Features

Suitable for	Enclosure type: VX VX SE PC IW AX CX One-Piece Console CX Pedestal Width: = 800 mm Enclosure type: VX VX SE PC IW AX CX One-Piece Console CX Pedestal Width: = 31.5 ~
Packaging unit	2 pc(s).
Net weight	3.89
Gross weight	4.1
Customs tariff number	73269098
EAN	4028177919525
ETIM 9	EC001285
ECLASS 8.0	27189261