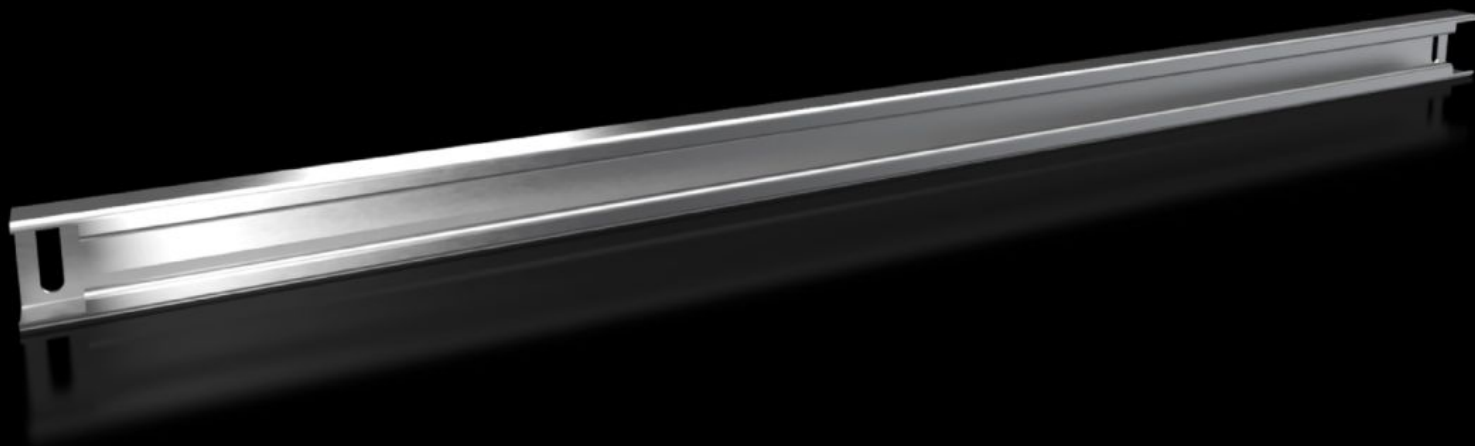


# Rittal – The System.

Faster – better – everywhere.



## VX 8617.820

## Support Rail 48 x 26 mm

State: 1/16/2026 (Source: [rittal.com/us-en](https://www.rittal.com/us-en))

ENCLOSURES

POWER DISTRIBUTION

CLIMATE CONTROL

IT INFRASTRUCTURE

SOFTWARE & SERVICES

FRIEDHELM LOH GROUP



# VX 8617.820 - Support Rail 48 x 26 mm for VX, VX SE, PC, IW, AX

For heavy installed equipment such as transformers. The T-head screw and longitudinal slots in the support rail accommodate all mounting dimensions.



## Features

Model No.	VX 8617.820
Product description	
Material	Carbon steel
Surface finish	Zinc-plated
Supply includes	Assembly components
Installation options VX	In enclosure width 1000 mm, on the inner mounting level and in the base
Installation options VX SE	In enclosure width 1000 mm, on the inner mounting level, in conjunction with adaptor rail for VX compatibility and in the base
Installation options AX	In enclosure width 1000 mm, in conjunction with the AX interior installation rail and AX base configuration rail
Installation options PC	In enclosure width 1000 mm, on the inner mounting level, in conjunction with adaptor rail for VX compatibility and in the base
Installation options IW	In enclosure width 1000 mm, on the inner mounting level, in conjunction with adaptor rail for VX compatibility and in the base

# Features

Suitable for	Enclosure type: VX VX SE PC IW AX CX One-Piece Console Width: = 1,000 mm Enclosure type: VX VX SE PC IW AX CX One-Piece Console Width: = 39.4 "
Packaging unit	2 pc(s).
Net weight	4.64
Gross weight	4.913
Customs tariff number	73269098
EAN	4028177919532
ETIM 9	EC001285
ECLASS 8.0	27189261