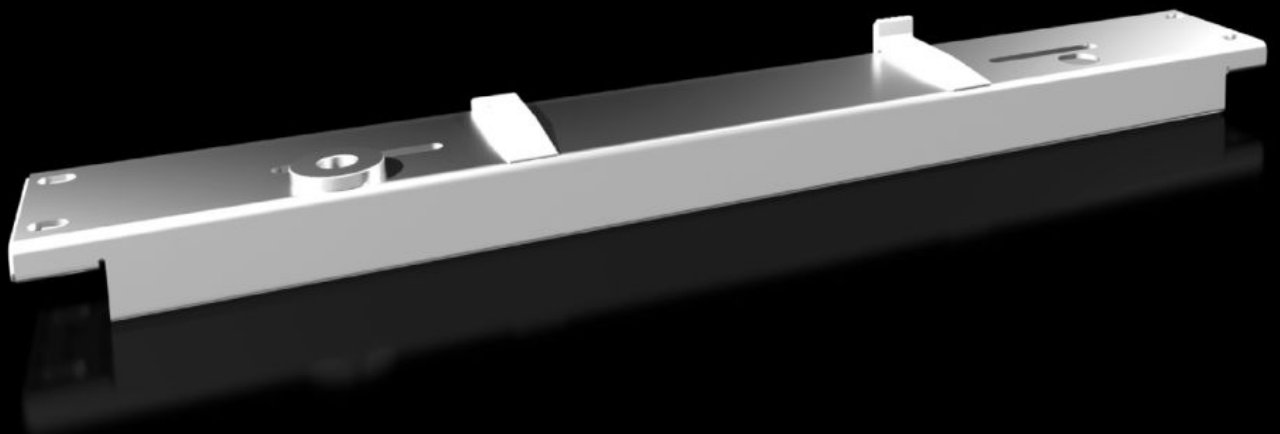


Rittal – The System.

Faster – better – everywhere.



VX 8619.040 Installation kit

State: 4/16/2026 (Source: rittal.com/us-en)

ENCLOSURES

POWER DISTRIBUTION

CLIMATE CONTROL

IT INFRASTRUCTURE

SOFTWARE & SERVICES

FRIEDHELM LOH GROUP



VX 8619.040 - Installation kit For VX swing frames, large

For mounting swing frames, large.

Features

Model No.	VX 8619.040
Product description	For mounting swing frames, large.
Material	Carbon steel, 3.0 mm
Surface finish	Spray-finished
Color	RAL 7035
Supply includes	Assembly components
Installation options	Directly on the enclosure section when installed above the full enclosure height In conjunction with a 23 x 64 mm system chassis for partial installations at enclosure height
Load capacity, static	3,500 N 786.831 lbf.
Suitable for	Width: = 600 mm Width: = 23.6 "
Packaging unit	1 pc(s).
Net weight	3.32 kg
Gross weight	3.62 kg
Customs tariff number	83024900
ETIM 9	EC002620
ECLASS 8.0	27189234
Product description	VX Installation kit, for swing frame, large, for W: 600 mm