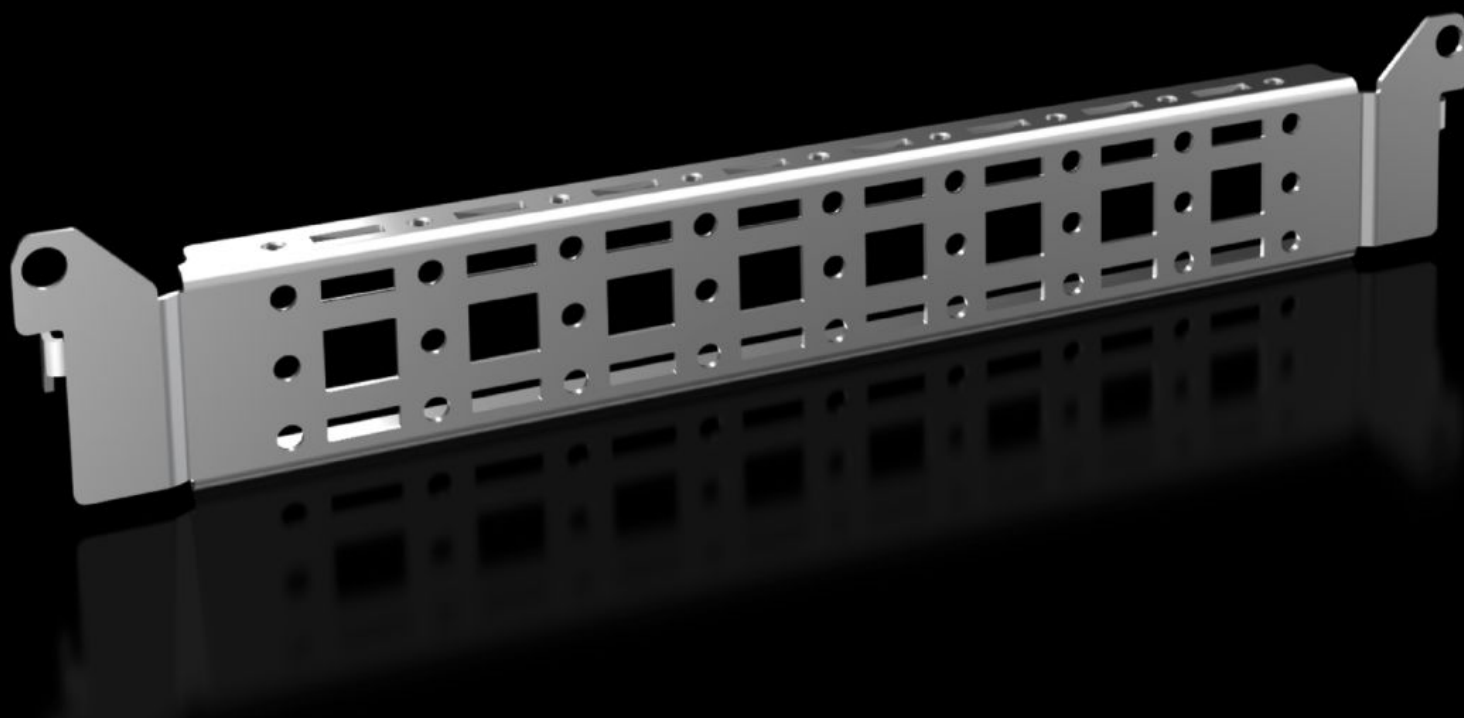


# Rittal – The System.

Faster – better – everywhere.



## VX 8619.700

## System chassis 14 x 39 mm

State: 7/16/2025 (Source: [rittal.com/us-en](http://rittal.com/us-en))

ENCLOSURES

POWER DISTRIBUTION

CLIMATE CONTROL

IT INFRASTRUCTURE

SOFTWARE & SERVICES

FRIEDHELM LOH GROUP



# VX 8619.700 - System chassis 14 x 39 mm for VX, VX SE, PC, IW, AX

For securing cable ducts, cable conduit holders, equipment installed on the door, etc.



## Features

Model No.	VX 8619.700
Product description	For securing cable ducts, cable conduit holders, equipment installed on the door, etc.
Material	Carbon steel
Surface finish	Zinc-plated
Supply includes	Assembly components
Distance between fixing points	275 mm
Suitable for door width	400 mm 15.7 "
Installation options VX	In door width 400 mm
Installation options AX	In enclosure width 300 mm and in enclosure height 400 mm, in conjunction with rail for interior installation AX
Installation options AX stainless steel	In enclosure width + 300 mm
Installation options AX plastic	In door width 400 mm
Installation options for 3-part AX	Enclosure depth 473 mm

# Features

Installation options CX	In pedestal in enclosure depth 400 mm In one-piece console lower part in enclosure depth 400 mm
Mounting tip	For installation in AX carbon steel, only in conjunction with rails interior installation AX
Note	Carbon steel screws or M5 self-tapping screws are required for extension with own components on the system chassis
Suitable for	Enclosure type: VX AX AX plastic AX wall-mounted housing, 3-part CX One-Piece Console CX Pedestal Suitable for width or height or depth: 400 mm
Packaging unit	4 pc(s).
Net weight	0.68
Gross weight	0.686
Customs tariff number	73269098
EAN	4028177924659
E-Number Sweden	E3465280
ETIM 9	EC002620
ECLASS 8.0	27189234