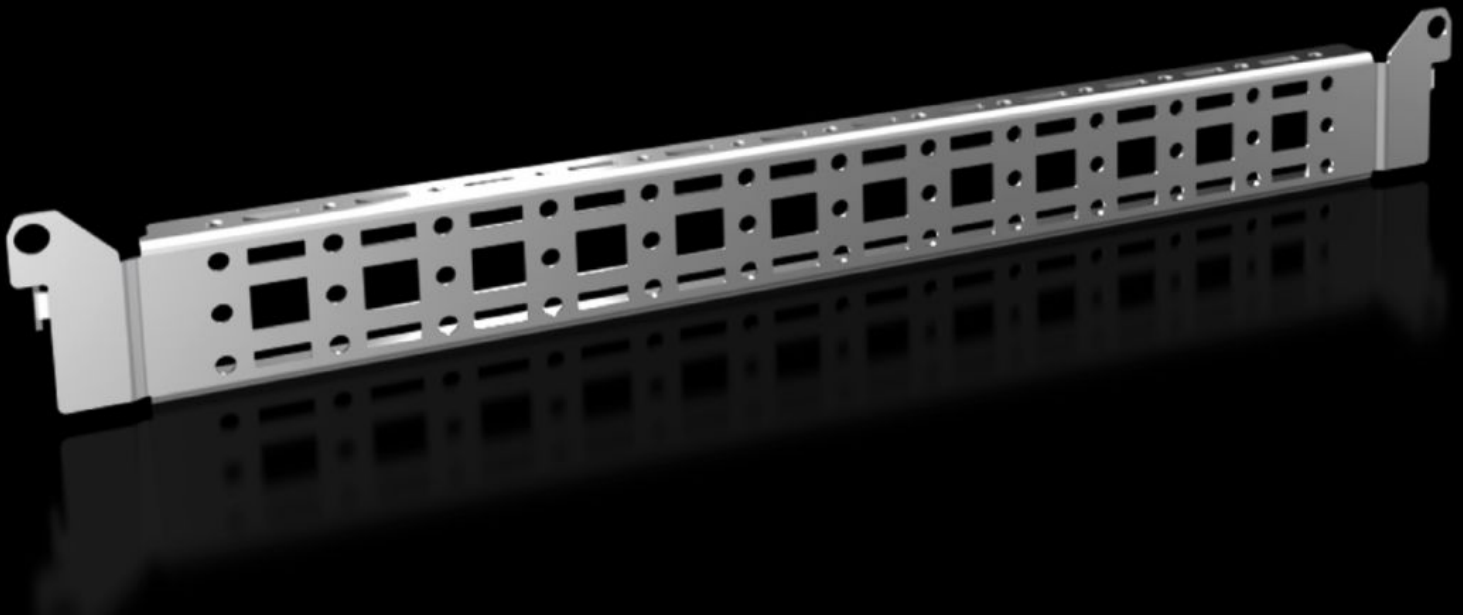


Rittal – The System.

Faster – better – everywhere.



VX 8619.710

System chassis 14 x 39 mm

State: 4/28/2026 (Source: rittal.com/us-en)

ENCLOSURES

POWER DISTRIBUTION

CLIMATE CONTROL

IT INFRASTRUCTURE

SOFTWARE & SERVICES

FRIEDHELM LOH GROUP



VX 8619.710 - System chassis 14 x 39 mm for VX, VX SE, PC, IW, AX

For securing cable ducts, cable conduit holders, equipment installed on the door, etc.



Features

Model No.	VX 8619.710
Product description	For securing cable ducts, cable conduit holders, equipment installed on the door, etc.
Material	Carbon steel
Surface finish	Zinc-plated
Supply includes	Assembly components
Distance between fixing points	375 mm
Suitable for door width	500 mm 19.7 "
Installation options VX	In door width 500 mm
Installation options VX SE	In door width 500 mm
Installation options AX	In enclosure width 400 mm and in enclosure height 500 mm, in conjunction with rail for interior installation AX In housing width 1000 mm in lockable door
Installation options AX stainless steel	In enclosure height 500 mm In enclosure width + 400 mm

Features

Installation options AX plastic	In door width 500 mm
Installation options for 3-part AX	Enclosure depth 573 mm
Installation options CX	In console and desk unit in the depth in conjunction with the rail for CX interior fitting In pedestal in enclosure depth 500 mm In door width 500 mm
Installation options TP	In consoles for 3-part assembly in enclosure width 600 mm, in conjunction with rail for interior installation TP, compact enclosure HD
Mounting tip	For installation in AX carbon steel, only in conjunction with rails interior installation AX
Note	Carbon steel screws or M5 self-tapping screws are required for extension with own components on the system chassis
Suitable for	Enclosure type: VX VX SE TP AX AX plastic AX wall-mounted housing, 3-part CX One-Piece Console CX console system Suitable for width or height or depth: 500 mm
Packaging unit	4 pc(s).
Net weight	0.8 kg
Gross weight	0.92 kg
Customs tariff number	73269098
ETIM 9	EC002620
ECLASS 8.0	27189234
Product description	VX Punched section, with mounting flange 14 x 39 mm, for door width: 500 mm

Approvals

Explanations

PCF-declaration