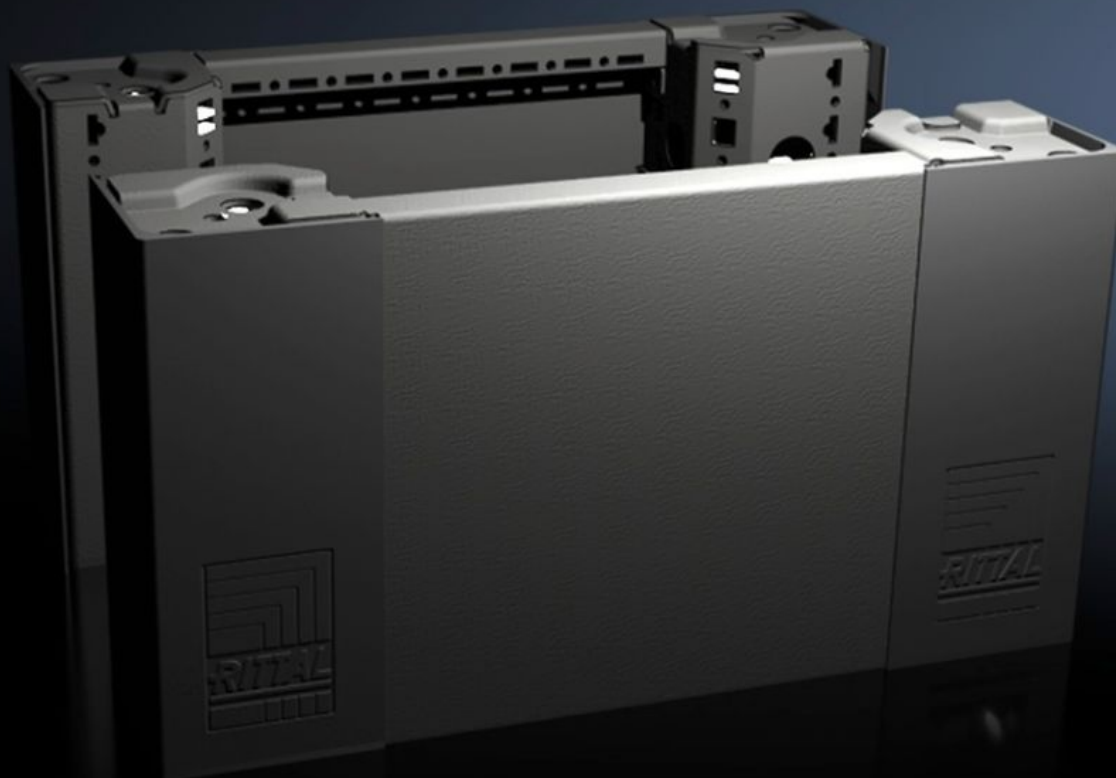


Rittal – The System.

Faster – better – everywhere.



VX 8620.021

Base/plinth corner pieces with base/plinth trim panels, front and rear, 200 mm

State: 8/29/2025 (Source: rittal.com/us-en)

ENCLOSURES

POWER DISTRIBUTION

CLIMATE CONTROL

IT INFRASTRUCTURE

SOFTWARE & SERVICES

FRIEDHELM LOH GROUP



VX 8620.021 - Base/plinth corner pieces with base/plinth trim panels, front and rear, 200 mm for VX, VX IT, VX SE, TE, TS, TS IT, TP, PC, IW

Base/plinth corner pieces with molded self-positioning to the bayed enclosure system, for use with or without trim panels depending on the application. Large openings in the base/plinth corner piece for best access to the screw-fastening point can be covered using bay and corner covers.

Features

Model No.	VX 8620.021
Product description	Base/plinth corner pieces with molded self-positioning to the bayed enclosure system, for use with or without trim panels depending on the application. Large openings in the base/plinth corner piece for best access to the screw-fastening point can be covered using bay and corner covers.
Material	Base/plinth corner piece: Carbon steel Base/plinth trim panels, front/rear: Carbon steel Corner and baying covers: Plastic
Color	RAL 9005
Supply includes	4 x base/plinth corner pieces, 200 mm high 4 x corner covers 1 x baying cover 1 base/plinth trim panel, front/rear, 200 mm 2 x base/plinth trim panels, front/rear, 100 mm high Assembly components
Note	Base/plinth trim panels, on the side for closing off a base/plinth unit, for additional stabilization of the bases/plinths to one another, or for interior installation of the bases/plinths
Dimensions	Height: 200 mm Height: 7.87 "

Features

Suitable for	Enclosure type: VX Width: = 400 mm Enclosure type: VX Width: = 15.7 "
Weight/packaging unit	5.42 kg 11.9 lb.
Packaging unit	2 pc(s).
Net weight	5.22
Gross weight	5.42
Customs tariff number	94039910
EAN	4028177922105
E-Number Sweden	E3465054
ECLASS 8.0	27182003

Approvals

Approvals	UL + C-UL - FTTA
-----------	------------------