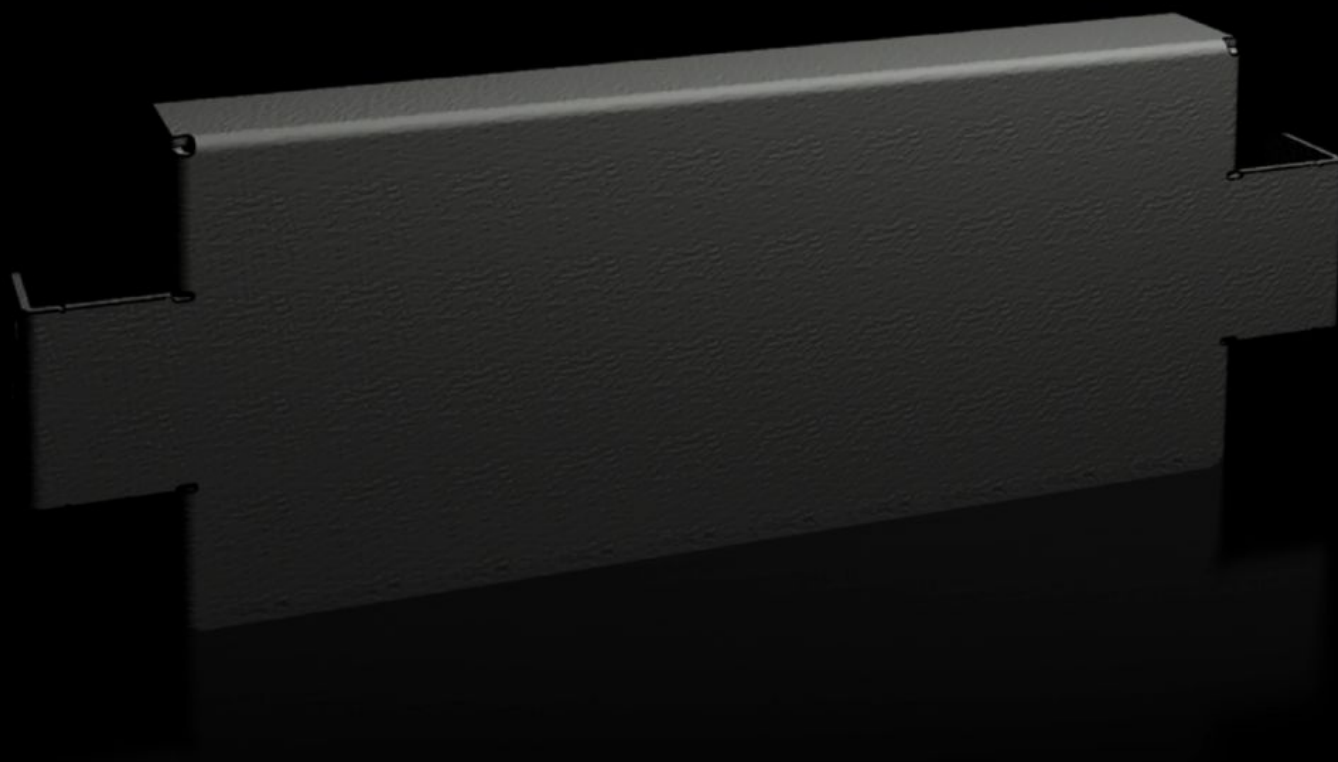
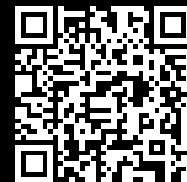


Rittal – The System.

Faster – better – everywhere.



VX 8620.031

Base/plinth trim panels, side, 100 mm

State: 5/21/2024 (Source: [rittal.com/us-en](https://www.rittal.com/us-en))

ENCLOSURES

POWER DISTRIBUTION

CLIMATE CONTROL

IT INFRASTRUCTURE

SOFTWARE & SERVICES

FRIEDHELM LOH GROUP



VX 8620.031 - Base/plinth trim panels, side, 100 mm for base/plinth system VX, carbon steel

Base/plinth trim panels are used depth-wise for laterally closing a base/plinth unit. The trim panel can be used in between two bayed enclosures to stabilize the base/plinth corner pieces. The 100 mm high trim panels can also be used and combined in 200 mm high base/plinths.

Features

Model No.	VX 8620.031
Product description	For side completion of a base/plinth unit and for additional stabilization or the interior installation of baying bases. One 200 mm high or two 100 mm high trim panels can optionally be used to 200 mm high base/plinths.
Material	Carbon steel
Color	RAL 9005
Supply includes	Assembly components
Dimensions	Height: 100 mm Height: 3.94 "
Suitable for	Depth: = 400 mm Depth: = 15.7 "
Weight/packaging unit	0.98 kg 2.2 lb.
Packaging unit	2 pc(s).
Customs tariff number	94039910
EAN	4028177922181
E-Number Sweden	E3465062
ETIM 7.0	EC000721
ECLASS 8.0	27182003

Approvals

Approvals

UL + C-UL (listed)

UL + C-UL - FTTA