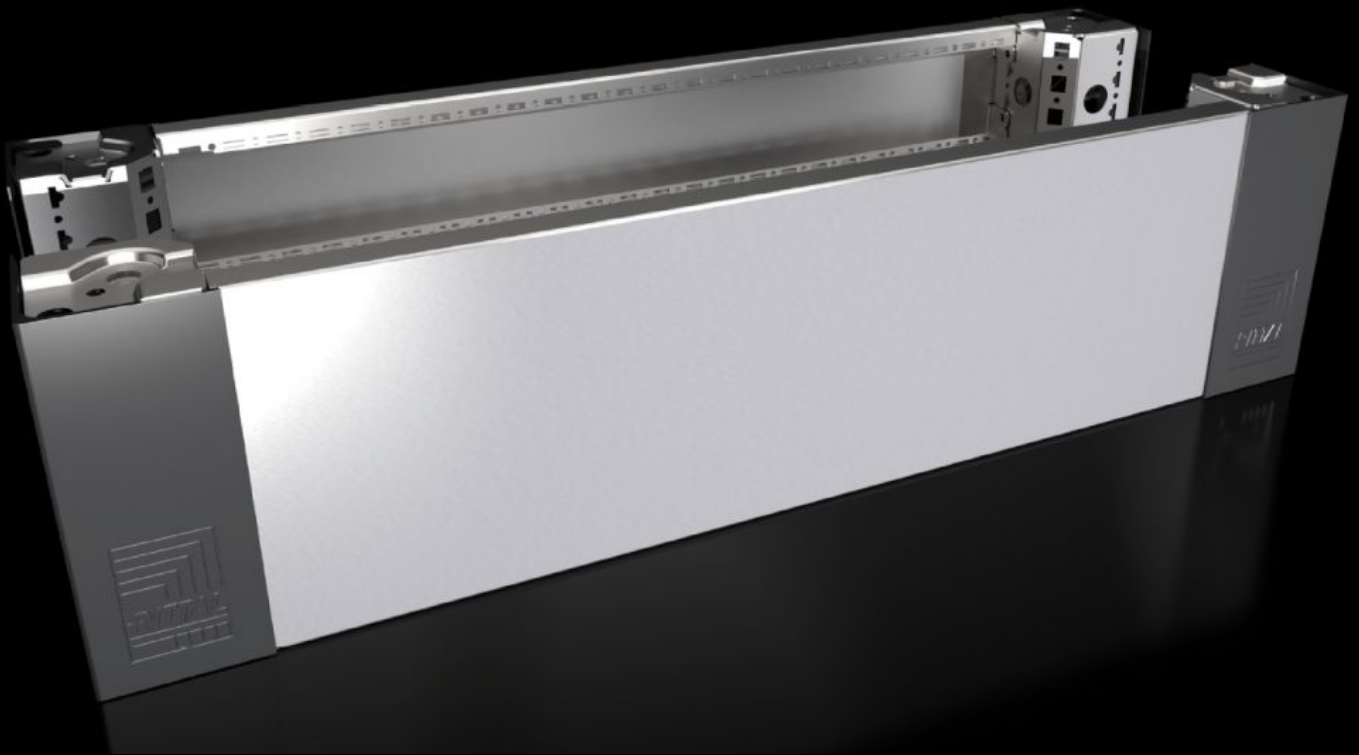


# Rittal – The System.

Faster – better – everywhere.



## VX 8620.061

Base/plinth corner pieces with  
base/plinth trim panels, front and  
rear, 200 mm stainless steel

State: 8/26/2025 (Source: [rittal.com/us-en](https://www.rittal.com/us-en))

ENCLOSURES

POWER DISTRIBUTION

CLIMATE CONTROL

IT INFRASTRUCTURE

SOFTWARE & SERVICES

FRIEDHELM LOH GROUP



# VX 8620.061 - Base/plinth corner pieces with base/plinth trim panels, front and rear, 200 mm stainless steel

Base/plinth corner pieces with molded self-positioning to the bayed enclosure system, for use with or without trim panels depending on the application. Large openings in the base/plinth corner piece for best access to the screw-fastening point can be covered using bay and corner covers.

## Features

Model No.	VX 8620.061
Product description	Base/plinth corner pieces with molded self-positioning to the bayed enclosure system, for use with or without trim panels depending on the application. Large openings in the base/plinth corner piece for best access to the screw-fastening point can be covered using bay and corner covers.
Material	Base/plinth corner piece: Stainless steel 1.4301 (AISI 304) Base/plinth trim panels, front/rear: Stainless steel 1.4301 (AISI 304) Corner and baying covers: Plastic
Surface finish	Trim Panel: Brushed, grain 400
Supply includes	4 x base/plinth corner pieces 4 x corner covers 1 x baying cover 1 base/plinth trim panel, front/rear, 200 mm 2 x base/plinth trim panels, front/rear, 100 mm high Assembly components
Note	Base/plinth trim panels, on the side for closing off a base/plinth unit, for additional stabilization of the bases/plinths to one another, or for interior installation of the bases/plinths The components of the first generation base/plinth system cannot be combined with the components of the second generation base/plinth system
Dimensions	Height: 200 mm Height: 7.87 "

# Features

Suitable for	Width: = 800 mm Width: = 31.5 "
Type rating according to UL 50E	Type 1 Type 3R Type 4 Type 4X Type 12
Weight/packaging unit	10.6 kg 23.4 lb.
Packaging unit	2 pc(s).
Net weight	7.96
Gross weight	8.36
Customs tariff number	94039910
EAN	4028177922341
ETIM 9	EC000721
ECLASS 8.0	27182003

# Approvals

Approvals	UL + C-UL - FTTA
-----------	------------------